



# **PRAIRIE STATE CONSERVATION COALITION**

Making Conservation Land Trusts Stronger

## **Conservation Land Trust Handbook**



# PRAIRIE STATE CONSERVATION COALITION

Making Conservation Land Trusts Stronger

P.O. Box 2547  
Springfield, IL 62708  
Phone: (217) 544 2473

Email:  
PSCC@prairiestateconservation.org  
Website:  
www.prairiestateconservation.org

## BOARD OF DIRECTORS

Emy Brawley, *President*  
**Openlands**  
Chicago, Illinois

Lisa Haderlein, *Vice President*  
**The Land Conservancy of  
McHenry County**  
Woodstock, Illinois

John Sentell, *Secretary*  
**Lake Forest Open Lands  
Association**  
Lake Forest, Illinois

Judy Barnard, *Treasurer*  
**Natural Lands Institute**  
Rockford, Illinois

Viv Bennett  
**The Nature Conservancy**  
Peoria, Illinois

Angelo Capparella  
**Parklands Foundation**  
Bloomington, Illinois

Tom Clay  
**Illinois Audubon Society**  
Springfield, Illinois

George Covington  
**Law Offices of George M.  
Covington LLC**  
Lake Forest, Illinois

Alice Henry  
**Prairie Land Conservancy**  
Macomb, Illinois

Dan Lobbes  
**The Conservation Foundation**  
Naperville, Illinois

Alley Ringhausen  
**Great Rivers Land Trust**  
Alton, Illinois

Terre Zeigler  
**Land Conservation  
Foundation**  
Decatur, Illinois

## Dear Friends:

*Prairie State Conservation Coalition* is a statewide, not-for-profit association that works to strengthen the effectiveness of conservation land trusts in Illinois. Conservation land trusts, also known as land conservancies, are non-profit organizations improving the quality of life in their communities through voluntary protection of land, water and other important natural resources.

Collectively, conservation land trusts in Illinois have helped to permanently protect more than 200,000 acres of open space across all regions of the state. These are places where people hike, fish, canoe, hunt, and enjoy.

## How We Work

Prairie State Conservation Coalition (PSCC) is a statewide service center for conservation land trusts. We accomplish our mission through:

**Direct Services and Consulting:** PSCC provides knowledge, educational tools, and networking opportunities to conservation land trusts in order to help them strengthen their operations, meet their conservation goals, and sustain efforts to conserve land for future generations.

**Advocacy:** PSCC seeks non-partisan, long-term solutions for land conservation. We work with law makers and government agencies to ensure that the laws and policies of state and local government reflect the land conservation values of our members and supporters.

**Outreach:** We promote the value of land conservation and conservation land trusts to Illinois communities and 'speak with one voice' for our membership. Through outreach and communications, we work to raise awareness of the importance of land protection and stewardship.

**Our current work** includes I-View, a Geographic Information Systems (GIS) spatial database and interactive website of all Illinois permanently protected conservation lands; the **Annual Training Event** March 3-4, 2016 at Starved Rock State Park Lodge; the **PSCC Hike App**, a downloadable app which offers guided tours by member organizations on protected lands throughout the state; and advocating for protection, management, and funding for important natural resources in Illinois.

Please enjoy this Handbook.

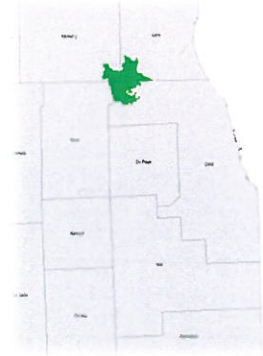
*Emy*

Sincerely, Emy Brawley, President, on behalf of the PSCC Board of Directors



# Barrington Area Conservation Trust

## BACT BARRINGTON AREA CONSERVATION TRUST



Area Served

### Board of Directors

Elizabeth C. Bramsen  
Benjamin D. Brown  
Bryan C. Croll  
Loren E. Ekstrom  
Louise Flannery  
Judy Freeman  
PK Johnson  
Stevenson Mountsier  
David F. Nelson  
Jan Nestrud  
Meghan Norton  
John Pappas  
Matt Vondra

### CONTACT: Barrington Area Conservation Trust

Lisa Woolford, Executive Director

210 W. Main Street, Barrington, IL 60010

Phone: (847) 387-3149 | [www.bactrust.org](http://www.bactrust.org)

- ❖ Since 2001, BACT has preserved over 480 acres of land in the Barrington area -- 438.5 acres by conservation easements, 31.5 acres by land donation or bargain sale, and 11.5 acres by scenic road easements. The land protected by our largest easement, the 406-acre Barrington Hills Horizon Farms easement (co-held with The Conservation Foundation), recently changed ownership and was purchased in 2014 by Forest Preserve District of Cook County providing us with a new partner for stewardship collaboration. Other easements include a beautiful oak woodland, high quality fen, and rare gravel hill prairie.
- ❖ Working with landowners, homeowner associations, and municipalities to implement best management practices to protect and preserve water resources in our area, BACT provides water stewardship expertise to Tower Lakes Drain Partnership, Flint Creek Watershed Partnership, and the Barrington Area Council of Governments Water Resources Committee. A strong partnership with Lake County Stormwater Management Commission has allowed for funding of many of our water preservation initiatives.
- ❖ The Conservation@Home, @Work, and @School programs assist owners of small backyards to large-scale landscapes with sustainable solutions. These include incorporating the use of native plants into the landscape, implementing water conservation practices and providing solutions that minimize the use of chemicals while contributing to a healthier region.
- ❖ [IL House Districts: 43, 51, 52, 54](#) [IL Senate Districts: 22, 26, 27](#)  
[US Congressional Districts: 6, 8](#)

*To preserve open lands, natural resources, equestrian character, and scenic beauty for the Barrington communities.*



**PRAIRIE STATE  
CONSERVATION  
COALITION**

Making Conservation Land Trusts Stronger



# Clifftop NFP

## Clifftop

Conserving Lands  
in  
Farm, Forest, Talus  
or  
Prairie



Area Served

### Board of Directors

George Obernagel, President

Steve Gonzalez, Vice President

Carl DauBach, Executive Director

Pen DauBach, Secretary-Treasurer

Joann Fricke, Membership Chair

Ralph Buettner

Charlie Frederick

Jim Hill

Jared Nobbie

Susan Rick

Tom Rollins

Bob Weck

CONTACT: Clifftop, P.O.B. 131, Maestown, IL 62256  
Phone: (618) 458- 4674 | [www.clifftopalliance.org](http://www.clifftopalliance.org) | [clifftop@htc.net](mailto:clifftop@htc.net)

- ❖ Clifftop was founded in 2006 by a group of local landowners. Clifftop works in a 40-mile long corridor in Monroe, St. Clair and Randolph Counties, containing 130,000 acres, which hosts a unique Illinois landscape of hill prairies, limestone glades, large forested blocks, and the karst sinkhole plain. The corridor is home to over 50 rare and threatened or endangered wildlife species. Clifftop's focus is three-fold:

- Conduct information and educational outreach programs centered on the importance of conservation. Since founding, Clifftop has hosted or co-hosted 104 public outreach events, with 7000 attendees

- Foster and incentivize landowner stewardship and conservation practices. Since 2009, Clifftop has facilitated and orchestrated bringing \$1,600,000 federal and state dollars to the corridor to implement individual landowner conservation practices.

- Preserve and protect critical natural areas in the corridor. Clifftop co-owns 475 acres in Monroe County, including White Rock Nature Preserve, which is open to the public, and 115 acres in Randolph County. Clifftop owns the 535-acre Paul Wightman Subterranean Nature Preserve in Monroe County. Clifftop has garnered over \$4½ million dollars in federal and foundation grants and more than \$100,000 in local donations to acquire these natural areas, and donated 30,000 volunteer hours to the causes of conservation in the corridor.

❖ **IL House:** 73 **IL Senate:** 37 **US Congressional District:** 12

*Clifftop's mission is to conserve, preserve and protect the Mississippi River bluff lands corridor in Southwestern Illinois.*



**PRAIRIE STATE  
CONSERVATION  
COALITION**

Making Conservation Land Trusts Stronger



# The Conservation Foundation



## Board of Directors

*Chris Burke, PhD, Chairman  
Naperville*

*June Keibler, Vice Chairman  
Dundee*

*Pam Parr, Secretary  
Oswego*

*Tom Schneider, Treasurer  
Naperville*

*Tom Bennington, Darien*

*John Binneboese, Itasca*

*Gail Bumgarner, Downers  
Grove*

*Sunil Chand, PhD, Wheaton*

*Pete Connolly, Wayne*

*Nancy Hopp, Aurora*

*James Huck, Wheaton*

*Robert Hutchinson, Wheaton*

*Julie Long, St. Charles*

*Joe Mikan, Lockport*

*Kaaren Oldfield, Glen Ellyn*

*Jack Pizzo, Sycamore*

*Ben Schwarz, Elgin*

*Lois Vitt Sale, Downers Grove*

*President/CEO*

*Brook McDonald*

10S404 Knoch Knolls Rd., Naperville, IL 60565 (630) 428-4500  
[www.theconservationfoundation.org](http://www.theconservationfoundation.org)

Incorporated in 1972, The Conservation Foundation (TCF) has focused on the protection of open space and rivers in DuPage, Kane, Kendall and Will counties. TCF has helped preserve more than 33,000 acres of land, most of which is in public ownership with park and forest preserve districts.

TCF employs 20 professional staff members, has an annual operating budget of approx. \$1.5 million, and raises additional funds for specific land acquisitions and special projects. TCF also receives land donations and conservation easements on a regular basis.

TCF works to protect and restore streams and watersheds. Priority watersheds include the DuPage River, Salt Creek, Fox River, Big Rock Creek, Blackberry Creek, and Aux Sable Creek. Education and outreach, in addition to on-the-ground restoration, are the primary means used to achieve this goal.

Major partners include: Illinois Clean Energy Community Foundation, Donnelley Foundation, Grand Victoria Foundation, Forest Preserve Districts of DuPage, Kane, Kendall and Will counties, DuPage County Stormwater, various park districts and municipalities, Illinois DNR, and numerous businesses and corporations.

[House Districts:](#) 29, 37, 41-43, 45-50, 65, 66, 70, 75, 77, 79, 80-86, 97, 98

[Senate Districts:](#) 17, 19, 21-25, 33, 35, 38, 39, 40-43, 49

*We preserve and restore natural areas and open space, protect rivers and watersheds, and promote stewardship of our environment.*



**PRAIRIE STATE  
CONSERVATION  
COALITION**

*Making Conservation Land Trusts Stronger*

# Conserve Lake County



Area Served

## Board of Directors

Carol Calabresa

Kelly Cartwright

Lawrence Falbe

Keith Gray

Paul Karl

Amy Knutson-Strack

Sheila Lee

Debbie Maurer

Thomas Milligan

Gary Mitchiner

Lydia Scott

Sarah Simpson

Bob Stanley

Dan Timm

CONTACT: 32492 N. Almond Rd, Grayslake IL 60030  
Phone: (847) 548-5989 | [www.ConserveLakeCounty.org](http://www.ConserveLakeCounty.org)

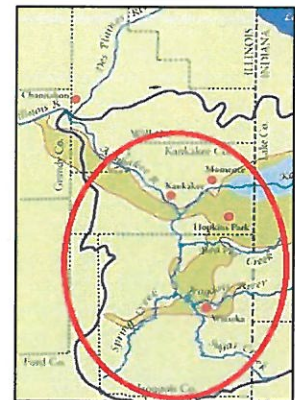
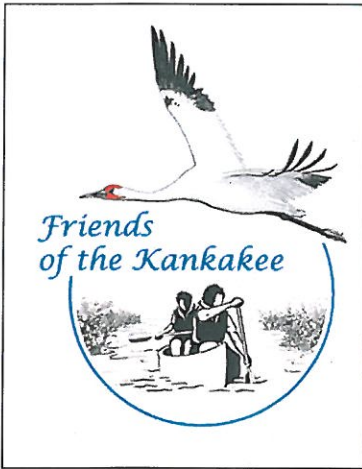
- ❖ Incorporated in 1995, Conserve Lake County's roots are in protection of the 6,000-acre Liberty Prairie Reserve, where more than half the land is permanently protected, natural areas are managed, numerous rare species exist and organic farms thrive.
- ❖ Conserve Lake County directly protects over 400 acres through fee simple land holdings and conservation easements, and has helped others to protect and steward thousands of additional acres. Conserve Lake County owns an IL Nature Preserve and a certified organic farm.
- ❖ Hundreds of property owners are enrolled in the region's popular Conservation At Home program for sustainable landscaping and land stewardship, administered locally by Conserve Lake County.
- ❖ Major partners include: Grand Victoria Foundation, Gaylord and Dorothy Donnelley Foundation, Liberty Prairie Foundation, Lake County Stormwater Management Commission, Libertyville Township Open Space District, Lake County Forest Preserve District and the Illinois Department of Natural Resources.
- ❖ **House Districts:** 51, 52, 57, 58, 59, 60, 61, 62, 64
- ❖ **Senate Districts:** 26, 29, 30, 31, 32
- ❖ **US Congressional Districts:** 6, 10, 14

*The mission of Conserve Lake County is to preserve open land, restore natural areas, and inspire a commitment to land conservation for the benefit of people and wildlife in Lake County.*





# Friends of the Kankakee



Area Served

## Board of Directors

Marianne L. Hahn, Ph.D.,  
President

Craig Zandstra, Vice-  
President

James Sweeney, Secretary

Lynn Riley, Treasurer

Dennis Clatterbuck

Linda Clatterbuck

Jean Hurrele

Thomas Larson

Gus Nyberg

Christine Salberg

CONTACT: Friends of the Kankakee, Inc., P.O. Box 13, Watseka, Illinois 60970

- ❖ **A** bi-state, all volunteer 501(c)3 organization with membership in Illinois and Indiana that advocates the creation of the Grand Kankakee National Wildlife Refuge.
- ❖ **We** acquire and manage black oak savanna and associated habitat, primarily in northeastern Iroquois county. Our goal is to connect the Iroquois State Wildlife Area and Hooper Branch Savanna Nature Preserve in Illinois with Willow Slough Fish and Wildlife Area in Indiana, currently separated by a highly fragmented strip of subdivided land. Our land is open to the public for non-consumptive recreation.
- ❖ **Over** 70 acres are registered in perpetuity with the state of Illinois as the Iroquois Sands Land and Water Reserve.
- ❖ **Ten** state-endangered or state-threatened species reside on our land, as well as several species of concern.
- ❖ **Partners and supporters include:** Iroquois County Board, Illinois Clean Energy Community Foundation, Izaak Walton League of America, Grand Victoria Foundation, Illinois Department of Natural Resources, Illinois Nature Preserves Commission, Pheasants Forever, Enbridge Energy, Walmart (Watseska), The Nature Conservancy, Thorn Creek Audubon Society.
- ❖ **IL House Districts:** 30, 38, 79, 80, 106 **IL Senate Districts:** 15, 17, 19, 40, 53 **US Congressional Districts:** 2, 16

*Our mission is to establish the Grand Kankakee Marsh National Wildlife Refuge. We will work with and support individuals and groups, public and private, who share this vision.*



# Grand Prairie Friends



Area Served

## Board of Directors

Jamie Ellis, president

Dave Easter, vice-president

Ruth Green, secretary

Fred Delcomyn, treasurer

Pam Leiter

Rob Stanton

Carol Steinman

Craig Milling

CONTACT: P. O. Box 36, Urbana, IL 61803;

[www.grandprairiefriends.org](http://www.grandprairiefriends.org); email to: james.ellis72@gmail.com

- ❖ **Grand Prairie Friends** is an all-volunteer, not-for-profit conservation organization and land trust composed of people from many walks of life who share a commitment to preserve and restore tallgrass prairie, woodlands, and other natural communities in east-central Illinois.
- ❖ GPF was established in 1984 when a small group of dedicated people came together to buy and protect six acres of remnant prairie (Shortline Prairie) in Champaign County.
- ❖ Since 1984 GPF has acquired and protected about 500 acres of land at 10 sites around east-central Illinois including original prairie remnants and high-quality oak forest. Volunteers help steward over a dozen other prairie and woodland natural areas on both public and private land.
- ❖ GPF is supported by membership donations, grants for specific projects, and fundraisers such as the spring Native Plant Sale and the Rattlesnake Master Run for the Prairie each fall.
- ❖ Since 1994, GPF has helped educate dozens of young people in natural areas management through its summer internship program.
- ❖ **Major partners include:** Illinois Clean Energy Foundation, Lumpkin Family Foundation, Grand Victoria Foundation Vital Lands, the Champaign County Forest Preserve District, the Urbana Park District, and the Illinois Department of Natural Resources.
- ❖ **IL House Districts:** 101, 102, 104, 106, and 110 **IL Senate Districts:** 51, 52, 55, and 59 **US Congressional Districts:** 13, 15, and 16

*Grand Prairie Friends preserves and restores natural communities in east-central Illinois and promotes an understanding and appreciation of natural resources.*



**PRAIRIE STATE  
CONSERVATION  
COALITION**

Making Conservation Land Trusts Stronger



# HeartLands Conservancy

**HEARTLANDS**  
CONSERVANCY  
Investing In The Nature Of Southwestern Illinois

Southwestern Illinois'  
leader in conservation  
since 1989



Area Served

## Board of Directors

**Robert J. Hilgenbrink, Chair**

IL Green Economy Network

**Frank O. Miles, Vice Chair**

Madison County Community  
Development

**Ronda Latina, Treasurer**

Environmental Operations, Inc.

**William Boardman**

Firehouse Contracting, LLC

**Ronald J. Foster, Jr.**

Schoen, Walton, Telken & Foster

**Dennis (Denny) Kirkham**

(Land Owner)

**Charles Meier**

Illinois State Representative

**Robert Nelson**

Nelson & Nelson Attorneys at Law

**Ron O'Connor**

O'Connor & Partners

**Cliff Schuette**

Schuette Seed Company

**Justin Siegel**

Deli Star Corporation

CONTACT: Dave Eustis, President, CEO

406 E. Main Street | Mascoutah, IL 62258

Phone (618) 566-4451 | [info@heartlandsconservancy.org](mailto:info@heartlandsconservancy.org)

- ❖ Collectively, more than 6,500 acres has been permanently protected since 2001, much of which is now open to the public.
- ❖ 1,063 acres were permanently protected in 2014, the most by any land trust working in Illinois.
- ❖ More than \$30 million has been invested in conservation in Southwestern Illinois.
- ❖ Our work with farmers is preventing 16,221 tons of nitrogen and 2,898 tons of phosphorous from entering local streams each year.

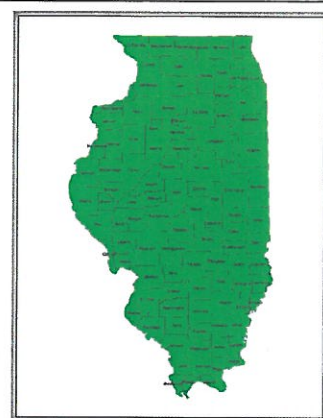
Rockhouse LLC, a corporation of the nine children of Armin and Rose Ann Weilbacher, forever protected three family farms in Monroe County, Illinois, in 2014. A total of 1,033 acres were protected, ensuring the land will not get divided in the future and its agricultural values will remain.



- ❖ **IL House Districts:** 95, 107, 108, 110-116 **IL Senate Districts:** 48, 50, 54, 56-58 **US Congressional Districts:** 13, 15, 17

*Mission: Provide leadership and solutions to sustain and enrich the diverse environmental resources of Southwestern Illinois.*

# Illinois Audubon Society



Area Served

## Board of Directors

Terri Treacy, *President*

Shelly Knuppel, *Vice-President*

Diane Wyatt, *Treasurer*

Rita Renwick, *Secretary*

Bob Andrini

Carolynn Benninghoff

Sonny Cohen

Carl DauBach

Rosemary Gaertner

Hugh Gilbert

Mary Hedrick

Vernon Kleen

Mark Luscombe

Sara Mathis

John McKee

Ruth Meyer

Mike Miller

Cindy Owsley

Jerry Prater

Kevin Richards

Randy Schietzelt

John Schroeder

James Smith

Jeff Walk

John Wallace

Pat Ward

Christine Zeman

CONTACT: Illinois Audubon Society

PO Box 2547, Springfield, Illinois 62708

Tom Clay, Executive Director

Phone: (217) 544-2473 | [tclay@illinoisaudubon.org](mailto:tclay@illinoisaudubon.org) | [illinoisaudubon.org](http://illinoisaudubon.org)

- ❖ Established April 10, 1897, Illinois Audubon is Illinois' oldest, non-profit statewide conservation organization. This membership organization includes statewide chapters, organizations and many at-large supporters. Since 1998, the Society has leveraged \$3,000,000 of its own land acquisition fund to garner an additional \$5,800,000 in private and public dollars to protect 3,500-acres throughout Illinois.
- ❖ Illinois' Wildlife Action Plan is a driving factor behind Illinois Audubon's land protection program. In recent years, species-specific acquisition efforts include protecting the state's second largest Indiana bat (federally endangered, Pope County) hibernacula, spotted dusky salamander (state endangered, Pulaski County), greater prairie-chicken (state endangered, Marion & Jasper Counties) and Blanding's turtle (state endangered, Lee County).
- ❖ Major partners include: Illinois Clean Energy Community Foundation, Grand Victoria Foundation, Illinois Department of Natural Resources, U.S. Forest Service, U.S. Fish and Wildlife Service, Illinois Nature Preserves Commission, Illinois Endangered Species Protection Board, Natural Resources Conservation Service and the Prairie State Conservation Coalition.

*The mission of the Illinois Audubon Society is to promote the perpetuation and appreciation of native plants and animals and the habitats that support them.*



**PRAIRIE STATE  
CONSERVATION  
COALITION**

Making Conservation Land Trusts Stronger



# Jo Daviess Conservation Foundation



Celebrating Horseshow Mound



Area Served

## Board of Directors

President  
Frances Rivoire

Vice President  
Fran Peterson

Treasurer  
Christine Larson

Secretary  
Nancy Breed

Ed Anderson

Barbara Baird

Lois Gordon

Bret Johnson

Rich Mattas

Mike Mills

Paul Rode

Celestino Ruffini

Skip Schwerdtfeger

Heidi Thorp

Nancy Winter

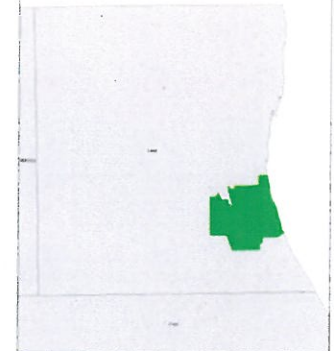
CONTACT: Jo Daviess Conservation Foundation  
815-858-9100 | [info@jdcf.org](mailto:info@jdcf.org) | [www.jdcf.org](http://www.jdcf.org)

- ❖ The Jo Daviess Conservation Foundation ("JDCF") was founded in 1993 by the citizens of Jo Daviess County to protect the incredible natural and cultural resources found in the Driftless Area of northwest Illinois. JDCF's conservation efforts have focused on the Mississippi River Bluffs, the Galena River and Apple River Corridors, and local Native American cultural sites. JDCF currently operates eight public preserves for the public to access and enjoy.
- ❖ Leveraging nearly \$7,000,000 in grant funding from private, corporate, state, and federal grant programs, JDCF and its partners have protected and restored over 4,400 acres of woods, prairies, and farmland throughout the Driftless Area. This amount does not include annual cash donation from individuals and businesses, in-kind gifts and services, and gifts of land or real estate interests.
- ❖ Major partners include: Illinois Bank & Trust, The Field Museum of Natural History, Jo-Carroll Energy, Tukaiz LLC, Northwest Illinois Prairie Enthusiasts, Illinois Clean Energy Community Foundation, Grand Victoria Foundation, Hamill Family Foundation, the City of Galena, the Village of Hanover, U.S. Fish & Wildlife Service, and the Illinois Department of Natural Resources.
- ❖ U.S. House District #17: Congresswoman Cheri Bustos
- ❖ Illinois Senate District #45: Senator Tim Bivins
- ❖ Illinois Representative District #89: Representative Brian Stewart
- ❖ US Congressional District #17: Representative Cheri Bustos

*The mission of the Jo Daviess Conservation Foundation is to conserve and enhance the natural wildlife habitat, cultural heritage, scenic vistas, & agricultural character of Jo Daviess County, Illinois and the surrounding area for future generations.*



# Lake Forest Open Lands Association



Area Served

## **Board of Directors**

Mark T. Ahern, *Chair*  
John W. Sentell, *President*  
Timm R. Reynolds, *Vice President*  
Martha Simpson, *Vice President*  
Thomas J. Duckworth, *Vice President and Treasurer*  
George M. Covington, *Secretary*

## **Directors**

Marion Cartwright  
Nancy D. Clemens  
Susan M. Franzetti  
Gail T. Hodges  
Willard M. Hunter  
Cathy McGowan  
Kristin Ryan, *ex officio*  
Melanie K. Rummel  
Carrie L. Shea

## **Life Directors**

Clarissa H. Chandler  
Suzanne S. Dixon  
Jamee J. Field  
Jean McB. Greene  
Margaret Hart  
John S. Lillard  
Howard B. Simpson

CONTACT: John Sentell, President

350 North Waukegan Road, Lake Forest IL 60045

Phone: (847) 234-3880 x15 | [info@LFOLA.org](mailto:info@LFOLA.org) | [www.LFOLA.org](http://www.LFOLA.org)

- ❖ Lake Forest Open Lands Association (LFOLA) is a land trust serving Lake Forest and Lake Bluff, Illinois. Since its establishment in 1967, LFOLA has acquired, preserved, restored and maintains over 800 acres of high quality local native landscapes including prairies, savannas, woodlands, ravines and wetlands for the benefit and enjoyment of the local communities. Our six nature preserves and 12 miles of walking trails are open to the public year-round. Our conservation work is supported completely by voluntary contributions, including membership dues and donations. We estimate that 20% of community residents are members of LFOLA.
- ❖ Lake Forest Open Lands often serves as a resource to other emerging conservation groups. We are proud to be the first land trust in Illinois that was accredited by the Land Trust Alliance in recognition of meeting national quality standards.
- ❖ LFOLA holds over 50 conservation and preservation easements in Lake Forest, Lake Bluff, and Mettawa, Illinois. We have two dedicated Illinois Nature Preserves within our borders, Middlefork Savanna and Shaw Prairie.
- ❖ LFOLA has a robust environmental education program, reaching over 3,500 youth annually in school programs and camps. Our Center for Conservation leadership is a successful new model with the mission to engage and empower the next generation of conservation leaders from diverse, underserved communities throughout Lake County.
- ❖ **House Districts:** 51, 58, 59 **Senate Districts:** 26, 29, 30  
**US Congressional District:** 10

*We are an independently funded conservation and educational organization devoted to the acquisition and stewardship of our natural landscapes, and to ensuring all generations have a meaningful, lasting connection to nature and our land.*



**PRAIRIE STATE  
CONSERVATION  
COALITION**

Making Conservation Land Trusts Stronger



# The Land Conservancy of McHenry County



*People Preserving Land Forever*



## Board of Directors

**Jan Kennedy, President**  
Retired Minister

**Douglas Hawthorn, VP**  
Township Assessor

**Randy Rapp, Treasurer**  
Attorney

**Steve Wenzel, Secretary**  
Computer Software Consultant

**Ders Anderson**  
Openlands, Greenways Director

**Marlene Frisbie**  
CPA, Nursery Management

**David Hall**  
Retired Surveyor

**Virginia Peschke**  
Nonprofit Manager

**Kathy Reiland**  
Small business owner/operator

**Sandra Scheinfeld**  
Author, Consultant

**Randy Schietzelt**  
Retired Biology Faculty

**Alan Stromberg**  
Retired Civil Engineer

.....

**Lisa Haderlein**  
Executive Director

**The Land Conservancy of McHenry County**  
4622 Dean Street, PO Box 352, Woodstock, IL 60098  
815-337-9502 | [www.ConserveMC.org](http://www.ConserveMC.org)

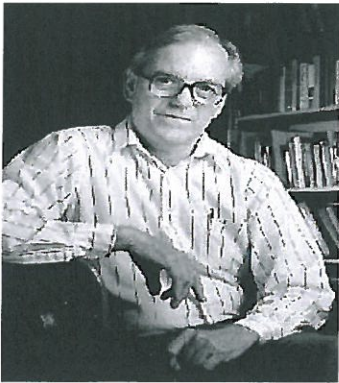
- ❖ Incorporated in 1991, TLC focuses on preservation of vulnerable natural areas, prime agricultural land and remnant oak woodlands in McHenry County. Vulnerable Natural Areas are places that have high ecological value, are managed by private landowners, and are not a priority for local, state or federal resource agency purchase.
- ❖ TLC has preserved over 2,100 acres of land that would otherwise have been developed or lost to neglect. The organization primarily helps private landowners preserve their property by accepting donated easements and outright land donations.
- ❖ In situations where TLC purchases land, over 90% of acquisition funds are raised from private sources.
- ❖ The majority of TLC's funding comes from its 675 members, fundraising events and earned income. About 40% of operating income comes from private foundations and just 5% from government sources. Outside of individuals, TLC's Major Partners include: Grand Victoria Foundation, Illinois Clean Energy Community Foundation, Willow Springs Family Trust, Gaylord & Dorothy Donnelley Foundation, the McHenry County Conservation District, Mackie Consultants, the City of Woodstock and Hey & Associates.
- ❖ House Districts: 52, 63-66 Senate Districts: 26, 32, 33 US Congressional Districts: 6th and 14th

*TLC preserves natural, agricultural and scenic lands in McHenry County by working with private landowners, communities and other partners.*





# Land Conservation Foundation



Bruce Hannon

*"Surely, one is formed by the community where one is raised, by the people of that place, and by their connection to the land. Hopefully, it is possible to start with the local sense of place and extend your awareness to the larger scale. My experience tells me that as we reach to larger and larger geographic scales of environmental concern, we become less and less effective. Clearly, organizations need to exist to address the large-scale problem but those who run them will lose the fire of purpose if they did not start with a local sense of place and constantly renew that sense by their return." --Bruce Hannon*



LCF Service Area

## LCF Board of Directors

**Bruce Hannon**-Prof. Geography  
- President/Urbana  
**Ted Rund**-Fmr Pepsico CEO  
-VP/Philo  
**Dan Holder**-Investment Advisor -  
Treasurer/Champaign  
**Beth Beauchamp**-Corporate  
Support -Sec/White Heath  
**Steve Beckett**-Prof. of Law  
-Urbana  
**Jeff Braun**-Prof. Biology  
-White Heath  
**Jay Downey**-Insurance Broker  
-Champaign  
**Michael Frerichs**-State Treasurer  
-Champaign  
**Heidi Hurd**-Prof. of Law  
-Monticello  
**Keddy Hutson**-Architect  
-Monticello  
**Leslie Mitchell**-Engineer Tech-  
-Stormwater -White Heath  
**Kyle Robeson**-Businessman  
-Champaign  
**Lott Thomas**-Attorney  
-Champaign  
**Terre Zeigler**- Ex. Director  
-Decatur

CONTACT: Terre Ziegler

Phone: (217) 649-7375 | [landconservationfoundation.org](http://landconservationfoundation.org)

- ❖ **Incorporated in 2003**, LCF has focused on the protection of the Sangamon River Corridor in Piatt and Champaign Counties. Much of the Sangamon River is on the IDNR's Illinois Natural Areas Inventory and it is also part of the Illinois Wildlife Action Plan. Moreover the Sangamon River is a key recharge area for the Mahomet Aquifer which provides drinking water for over 750,000 people including the cities of Decatur and Champaign.
- ❖ **To date, using private, corporate, state and federal funding** LCF and its partners have protected 435- acres along the Sangamon River. LCF and its partners have raised \$2,293,310 in cash. The ratio of funding is 34% foundations, 33% government, 24% corporations and 8% private. This does not include in-kind services, gifts of land or donations of time and materials.
- ❖ **Working with partners and volunteers** we have built over a mile of hiking trail and two parking lots for public access to our holdings. LCF also owns a 75-acre Illinois Nature Preserve in DeWitt County. A private asphalt corporation donated a parking lot there and at another LCF preserve in Piatt County so that school buses have easy access.
- ❖ **Major partners include:** Illinois Clean Energy Community Foundation, Enbridge Corporation, City of Monticello. Champaign Asphalt, Piatt County Forest Preserve District, Champaign and Piatt Co. Soil and Water Districts, Robeson Family Foundation, Archer Daniels Midland Corp. and the Illinois Department of Natural Resources.
- ❖ **IL House Districts:** 101, 102, 104, 109, 110 **IL Senate Districts:** 51, 52, 55  
**US Congressional Districts:** 13, 15, 16

*The mission of the Land Conservation Foundation is to conserve natural areas and open spaces and to work for the restoration and protection of these lands.*



# Natural Land Institute



**George B. Fell**

"We are living at the time of man's final conquest over the wilderness. What we have saved, and what we may save in the next few years, will be all the true wild nature that will remain to pass on from generation to generation in the years ahead. There will never be another chance."

*-George B. Fell, Founder of the  
Natural Land Institute*



**NLI Service Area**

## NLI 2015 Board of Trustees

### President:

Daniel Williams, Rockford

### Vice Presidents:

Ellwyn Englof, Rockford

Rick Barton, Rockford

### Secretary:

Rolf Thienemann III, Rockford

### Treasurer:

Tom Ptacin, Roscoe

### Trustees:

Mary Caskey, Rockford

Steve Clark, Rockford

Jon Duerr, St. Charles

Jay Evans, Rockford

Ray Ferguson, Rockford

Colleen Hoesly, Rockford

Ruth Little, Rockford

Mark Maffei, Roscoe

Linda Miller, Rockford

Alan Nowicki, Freeport

Tom Sandquist, Rockford

Reed Sjostrom, Rockford

Troy Skwor, Rockford

Michael White, Jr., Poplar Grove

### Social Media:

Facebook: Natural Land Institute

Twitter: NLI1958

Instagram: NLI1958

Flickr: Natural Land Institute

- ❖ **Incorporated in 1958**, NLI, based in Rockford is a private, non-for-profit, land trust and conservation organization with a focus area in twelve counties within the Rock River watershed and along the Mississippi River bluffs of northwestern Illinois. The counties are: Boone, Bureau, Carrol, DeKalb, Henry, Jo Daviess, Lee, Ogle, Rock Island, Stephenson, Whiteside, Winnebago
- ❖ **To date, using primarily private funding and IDNR funds**, NLI and its partners have protected more than 16,000 acres of prairies, forests, wetlands and river corridors in Illinois and southern Wisconsin.
- ❖ **NLI's Largest Land Protection and Restoration Project**, the 721-acre Nygren Wetland Preserve in Rockton is our first large-scale effort to restore natural communities. It is part of a larger network of interconnected natural land and working landscapes in the Rock and Mississippi River. The *Dianne Nora Nature Trail* is a 2.5 mile free public hiking trail located at the preserve that is open year round. Download the Prairie State Hike App on your phone to see and hear the trail tour.
- ❖ **A significant portion of NLI's funding comes from individual donors.** Other sources of income include bequests and planned gifts, corporate and foundation gifts, gifts of land and conservation easements, and income from our endowments and other invested funds.
- ❖ **Major partners include:** Illinois Department of Natural Resources, Illinois Nature Preserves Commission, Community Foundation of Northern Illinois, Grand Victoria Foundation, Illinois Clean Energy Foundation, Beloit College, and Rock Valley College
- ❖ **House Districts:** 67, 68, 69, 70, 71, 72, 73, 74, 76, 89, 90 **Senate Districts:** 34, 35, 36, 37, 38, 45 **US Congressional Districts:** 14, 16, 17

*The mission of the Natural Land Institute is to create an enduring legacy of natural land in northern Illinois for people, plants and animals.*



**PRAIRIE STATE  
CONSERVATION  
COALITION**

*Making Conservation Land Trusts Stronger*

**Contact: Kerry Leigh, Executive Director**

815/964-6666, [kleigh@naturalland.org](mailto:kleigh@naturalland.org)

320 S. Third St., Rockford IL 61104

**Website: [NaturalLand.org](http://NaturalLand.org)**

**NATURAL LAND  
INSTITUTE**

*Conserving Land in Northern Illinois*

# The Nature Conservancy-Illinois



Bison at Nachusa Grasslands



Area Served

## Board of Trustees

Harry W. Drucker  
*Chair*

David L. Thomas, PhD  
*Vice Chair*

Philip D. Block IV  
*Treasurer*

Lynne Dinzole  
Lynn B. Donaldson  
George A. Farnsworth  
Peter H. Fenner  
Jamee C. Field  
Christopher D. Gould  
Ted Haffner  
Ronald S. Levin  
Ian McCutcheon  
Ethan Meers  
Charles G. Mueller  
Brenda Shapiro  
Richard E. Sparks, PhD  
M. Jay Trees

### Trustees Emeriti

Jane Balaban  
Henry T. Chandler  
Donald R. Darr  
Guy C. Fraker  
Elisha Gray  
Jonathan Hamill  
Constance T. Keller  
Bill Kurtis  
Lorin I. Nevling, PhD  
James Otis Jr.  
Harry C. Stone, MD  
Nancy Hamill Winter

### Life Trustees

Henry N. Barkhausen  
Wendy J. Paulson

### Chicago Booth Board Fellows

Christopher Lee  
Dana Robinson

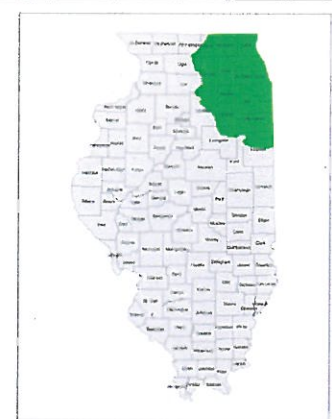
CONTACT: 8 South Michigan Avenue | Chicago, IL 60603-3357

- ❖ Incorporated in 1951, TNC has over 26,000 members in Illinois.
- ❖ Leveraging private, corporate, state and federal funding TNC has helped to protect 86,827 acres in Illinois.
- ❖ TNC currently owns 18,271-acres in Illinois; our larger preserves include Nachusa Grasslands, Emiquon, Kankakee Sands and Indian Boundary Prairies.
- ❖ TNC is active in agriculture and water policy issues affecting the Great Lakes, Mississippi River basin and the Gulf of Mexico.
- ❖ TNC provides leadership on policy issues such as those facing urban ecosystems and climate change effects on nature.
- ❖ TNC's Science Program is currently managing 56 projects resulting in 13 published papers and 23 technical reports in 2014.
- ❖ TNC is a leader in providing volunteer opportunities, anchored by the **Volunteer Stewardship Network**; a statewide program, but also at our preserves and at the Midewin National Tallgrass Prairie.
- ❖ Major partners include: Illinois Clean Energy Foundation, Grand Victoria Foundation, the Illinois Department of Natural Resources, U.S. Forest Service, U.S. Fish Wildlife Service and many other foundations and private donors.

*The mission of The Nature Conservancy is to conserve the lands and waters on which all life depends.*



# Openlands



Openlands Service Area

## Board of Directors

Richard J. Carlson - *Chair*  
Jill Allread  
J. Tyler Anthony  
Adrienne Archia  
Gary F. Balling  
Paul L. Becker  
Alan M. Bell  
Shaun C. Block  
Bill Clarkin  
George W. Davis  
Garrett Handley Dee  
Derek R. B. Douglas  
Josephine F. Elting  
Dean Fischer  
Hugh D. Frisbie  
John M. Haight, III  
Jonathan C. Hamill  
Mark M. Harris  
Christina Hynes, MD  
Scott Jamieson  
Iris Krieg  
Carrie C. McNally  
Andrew Otting  
Wendy J. Paulson  
Steven M. Ricchio  
J. Timothy Ritchie  
Jeffrey R. Rode  
Jo Ann M. Seagren  
Charles Saltzman  
Patrick Shaw

CONTACT: 25 East Washington St., Suite 1650 | Chicago, IL 60602  
Phone: (312) 863-6250 | Email: [info@openlands.org](mailto:info@openlands.org)

- ❖ Founded in 1963, Openlands is one of the oldest metropolitan conservation organizations in the nation and the only such group with a regional scope in the greater Chicago region. Openlands has helped protect more than 55,000 acres of land for public parks and forest preserves, wildlife refuges, land and water greenway corridors, urban farms, and community gardens.
- ❖ Openlands recently completed a multi-year, \$5.6 million project protecting riparian corridors along the high-quality Kishwaukee River and its tributaries in Boone County. Over 800 acres of new public lands have been secured for habitat and recreation. The Boone County Conservation District will restore the wetlands, wet forests, savannas, and upland prairies to full ecological health, and new trails and parking areas have already been developed. Openlands will monitor the properties to ensure they are forever protected.
- ❖ Major partners include: Cook County Forest Preserve District, Chicago Metropolitan Agency for Planning, Metropolitan Water Reclamation District, Illinois Environmental Council, Land Trust Alliance, Neighborspace, Chicago Wilderness, Grand Victoria Foundation
- ❖ IL House Districts: 1-70, 75, 79, 80, 81, 90, 97, 98 IL Senate Districts: 1-35, 38-43, 45, 49 US Congressional Districts: 1-9, 10-11, 14, 16, 17

*Openlands unites the people and resources of the diverse Chicago metropolitan region around the goal of land and water protection, providing a healthy vibrant space to live and work.*





# ParkLands Foundation



Area Served

## Board of Directors

Jim Franks President  
Dan Deneen Vice President  
Julie Elzanati Secretary  
Nancy Armstrong Treasurer

### Directors

Finn Amble  
Michael Brown  
Bethany Evans- Campbell  
Angelo Capparella  
Jessica Chambers  
Matt Fraker  
Given Harper  
Matt Hickman  
Nathan Hinch  
Krista Kirkham  
Maria Lemke  
Les Luginbuhl  
Patrick Murphy  
Mike O'Grady

### Honorary Directors

Roger Anderson  
Dale Birkenholz  
Guy Fraker

CONTACT: Mike Hall, Administrative Director

202 W. College Avenue, Normal, IL 61761

Phone: (309) 454-3169 ext.16 | Email: [ParkLandsOffice@gmail.com](mailto:ParkLandsOffice@gmail.com)

[www.parklandsfoundation.org](http://www.parklandsfoundation.org)

- ❖ **ParkLands Foundation** was founded in 1967 in McLean County, Illinois. Founder Loring Merwin said in an organizing meeting, "Two things are obvious—potential outdoor recreation here is disappearing under the plow and under plans for residential subdivisions; and the taxpaying public is not yet ready to act."
- ❖ **ParkLands today is**
  - Fulltime Land Steward, Part-time Executive Director
  - Over 3,200 acres in Woodford and McLean counties
  - McLean County: 15 preserves, 2 conservation easements
  - Woodford County: 9 preserves, 3 conservation easements two Illinois Nature Preserves
  - 10 miles of river frontage Mackinaw River
  - 7 miles of hiking trails in the 724 acre Merwin Preserve
  - 4 canoe launches
- ❖ **Major partners include:** Illinois Clean Energy Illinois Buffer Partnership, Illinois Prairie Community Foundation, The Nature Conservancy, Vital Lands Illinois, Land Trust Alliance and the Illinois Department of Natural Resources.
- ❖ **IL House Districts:** 73,88, 106 **IL Senate Districts:** 37,44, 53 **US Congressional Districts:** Unknown

*To preserve, protect and ecologically restore historic natural lands in the middle and upper Mackinaw Valley watershed. These lands are dedicated primarily for preserving the biological diversity of native plants and wildlife, and secondarily for passive public recreation, environmental educational and scientific research.*



# Prairie Land Conservancy



PLC Service Area

## Board of Directors

**Dr. Timothy Collins**, Assistant  
Director IL Institute for Rural  
Affairs - Chair, Bushnell

**Alice Henry**, Finance Chair  
McDonough County Board, Vice  
Chair, Macomb

**Dr. Charles Gilbert**, Vice  
President, Western Illinois  
University, Retired, - Secretary,  
Nauvoo

**Chris Delaney-Barmann**,  
Businessman - Treasurer,  
Macomb

**Margaret Ovitt**, Landscape  
Architect, Macomb

**Dan Moorehouse**, Paramedic,  
Warsaw

**Dr. Michael Romano**, Professor  
Biology - Western Illinois  
University, Macomb

**Trevor Toland**, McDonough  
County Board, Cattle Rancher,  
Macomb

**John Hauk**, Attorney, Ex Officio,  
Quincy

CONTACT: David P. King, Executive Director  
321 West University Drive Macomb, Illinois 61455

Phone: (309) 833-4747

Email: [prairie@frontier.com](mailto:prairie@frontier.com)  
[prairielandconservancy.org](http://prairielandconservancy.org)

- ❖ Chartered in 2007 as a division of Prairie Hills Resource Conservation and Development, Inc., the PLC is safeguarding natural resources including wildlife, water and soil, and preserving land between the Mississippi and Illinois Rivers.
- ❖ Leveraging \$2,700,000 in funding from federal, foundation and private monies, we have protected 1,425 acres of Illinois' most significant landscapes including rivers, wetlands, prairies, forests and sustainable agricultural land for future generations to appreciate, recreate, and observe nature. This does not include in-kind services, gifts or donations of time and materials. The PLC owns a 200 ac Nature Preserve along the Mississippi River, an 18 ac bird sanctuary and a 535 ac forest and farmland along the IL River floodplain.
- ❖ **Major partners include:** Illinois Clean Energy Community Foundation, Enbridge Corporation, U.S. Fish and Wildlife Service, U.S. Natural Resources Conservation Service, The Conservation Fund, Illinois Nature Preserves Commission, Illinois Audubon Society and the Illinois Department of Natural Resources.
- ❖ **IL House Districts:** 74, 91, 93, 94 **IL Senate Districts:** 37, 46, 47
- ❖ **US Congressional Districts:** 17, 18

*The Prairie Land Conservancy's mission is to preserve wildlife habitat, open space, natural areas, and sustainable agricultural land.*

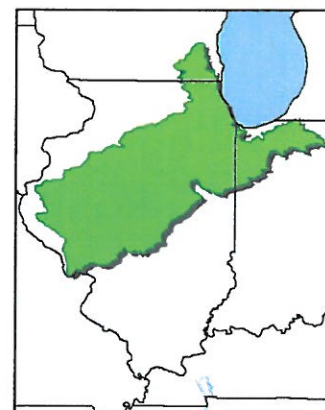


**PRAIRIE STATE  
CONSERVATION  
COALITION**

Making Conservation Land Trusts Stronger



# The Wetlands Initiative



TWI Service Area

## Board of Directors

Steven M. Ryan, *Chairman*  
Edward K. Chandler, *Co-Vice Chair*  
Christopher Kerns, *Co-Vice Chair*  
Carl R. Yudell, *Secretary and Treasurer*  
Bruce M. Becker  
Paul Botts (*ex officio*)  
Christopher B. Burke, Ph.D.  
George M. Covington  
William F. Dooley  
Wendy Freyer  
Allen D. Grosboll  
Becky Hair Hurley  
Mark D. Maffei, Ph.D.  
Brent Manning  
Charles T. Pick  
Albert E. Pyott, *Co-Founder and Chairman Emeritus*  
Caroline Repenning  
Thomas I. Rodhouse  
John W. Sentell  
Douglas F. Stotz, Ph.D.  
Richard P. Toft  
Michael B. Zeddies, Jr.

CONTACT: 53 West Jackson Boulevard, Suite 1015 | Chicago, IL 60604  
Phone: (312) 922-0777 | Email: [twi@wetlands-initiative.org](mailto:twi@wetlands-initiative.org)

- ❖ Established in 1994, TWI's project focus area is the Illinois River Watershed. Our flagship large-scale habitat restoration project is the **Sue and Wes Dixon Waterfowl Refuge at Hennepin & Hopper Lakes**, a 3,000-acre mosaic of high-quality backwater lakes, wetlands, prairies, and savannas along the Illinois River in Putnam County. It is open to the public year-round for hiking, bird-watching, paddling, and other recreation. In 2012, the Dixon Refuge was named a Wetland of International Importance under the Ramsar Convention on Wetlands for its outstanding biodiversity – one of only 36 “Ramsar sites” in the United States and the only one to have been a complete restoration.
- ❖ Through an award-winning public-private partnership with the U.S. Forest Service, TWI has leveraged \$3.5 million in private, corporate, state, and federal funding to restore native prairie-wetland landscapes at **Midewin National Tallgrass Prairie** in Will County. In the **Big Bureau Creek Watershed** in north-central Illinois, we are helping farmer leaders install small, precisely placed wetlands to demonstrate a practical solution to naturally reduce nutrient runoff into waterways.
- ❖ Major partners include: Grand Victoria Foundation; Illinois Clean Energy Community Foundation; Gaylord & Dorothy Donnelley Foundation; Illinois Department of Natural Resources (on developing a public fishery at the Dixon Refuge); National Forest Foundation; The Conservation Fund; and the U.S. Forest Service.
- ❖ IL House Districts: 6, 73, 74, 75, 76, 80, 86 IL Senate Districts: 3, 37, 38, 40, 43, 45 US Congressional Districts: 1-14, 16-18

*The Wetlands Initiative is dedicated to restoring the wetland resources of the Midwest to improve water quality, increase wildlife habitat and biodiversity, and reduce flood damage.*



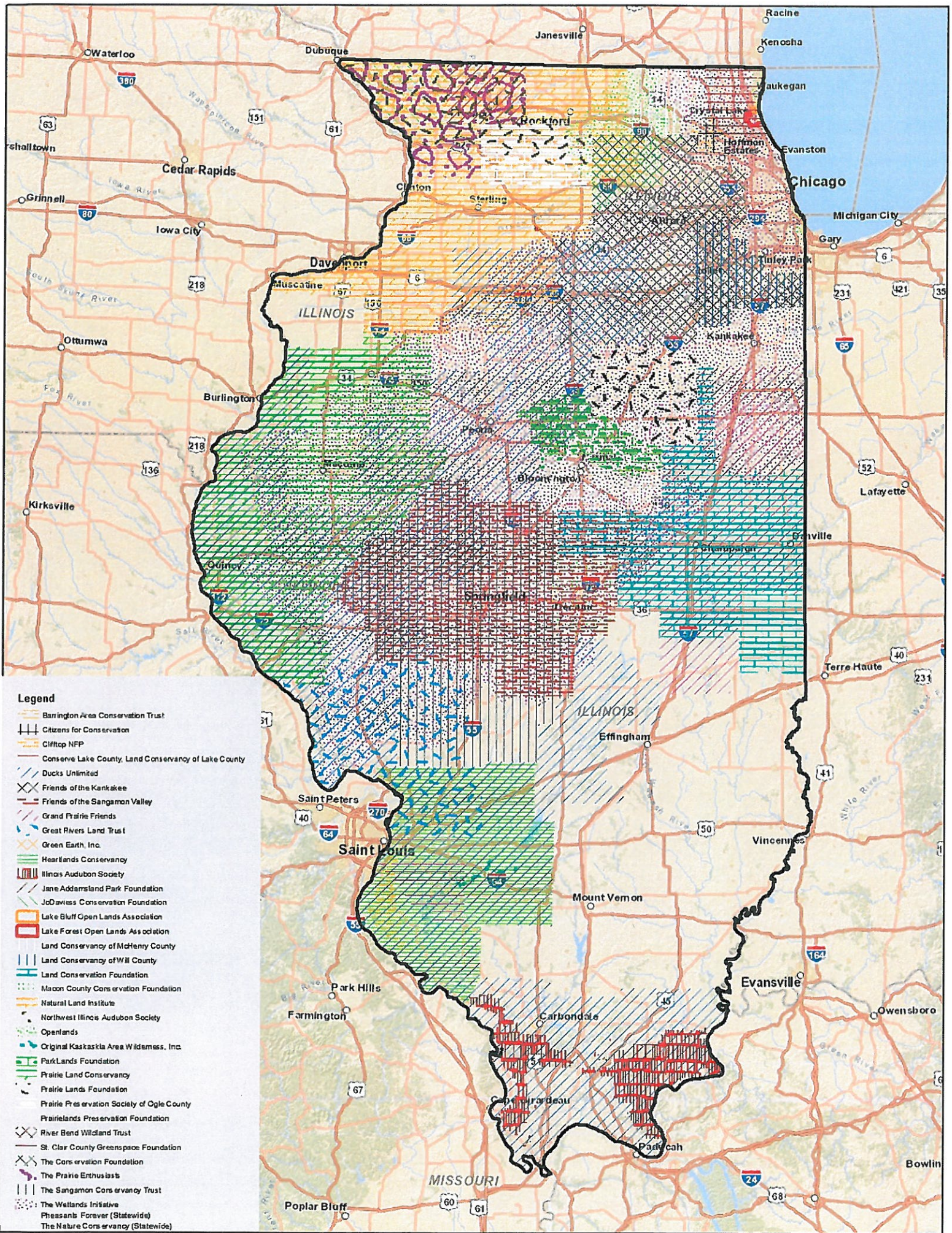
# INDEX TO CONSERVATION LAND TRUST HANDBOOK

County	Conservation Land Trusts Operating in County
Adams	Ducks Unlimited, Prairie Land Conservancy, The Wetlands Initiative
Alexander	Ducks Unlimited, Illinois Audubon Society
Bond	Heartlands Conservancy
Boone	Natural Land Institute, Openlands
Brown	Prairie Land Conservancy, The Wetlands Initiative
Bureau	Natural Land Institute
Calhoun	The Wetlands Initiative
Carroll	Natural Land Institute
Cass	Ducks Unlimited, The Wetlands Initiative
Champaign	Grand Prairie Friends, Land Conservation Foundation, The Wetlands Initiative
Christian	The Wetlands Initiative
Clinton	Heartlands Conservancy
Coles	Grand Prairie Friends
Cook	Barrington Area Conservation Trust, Openlands, The Wetlands Initiative
DeKalb	The Conservation Foundation, Natural Land Institute, Openlands, The Wetlands Initiative
DeWitt	Land Conservation Foundation, The Wetlands Initiative
Douglas	Grand Prairie Friends, Land Conservation Foundation
Du Page	Barrington Area Conservation Trust, Openlands, The Conservation Foundation, The Wetlands Initiative
Edgar	Land Conservation Foundation
Ford	Grand Prairie Friends, Land Conservation Foundation, Openlands, The Wetlands Initiative
Fulton	Prairie Land Conservancy, The Wetlands Initiative
Gallatin	Ducks Unlimited, Illinois Audubon Society
Greene	The Wetlands Initiative
Grundy	The Conservation Foundation, The Wetlands Initiative, Openlands
Hancock	Prairie Land Conservancy, The Wetlands Initiative
Hardin	Ducks Unlimited, Illinois Audubon Society
Henderson	Prairie Land Conservancy, The Wetlands Initiative
Henry	Natural Land Institute, The Wetlands Initiative
Iroquois	Friends of the Kankakee, Grand Prairie Friends, Openlands, The Wetlands Initiative
Jersey	The Wetlands Initiative
Jo Daviess	Jo Daviess Conservation Foundation, Natural Land Institute
Johnson	Ducks Unlimited, Illinois Audubon Society
Kane	Openlands, The Conservation Foundation, The Wetlands Initiative
Kankakee	Openlands, The Wetlands Initiative
Kendall	Openlands, The Conservation Foundation, The Wetlands Initiative
Knox	Prairie Land Conservancy, The Wetlands Initiative
La Salle	The Conservation Foundation, Openlands
Lake	Barrington Area Conservation Trust, Conserve Lake County, Lake Forest Open Lands Foundation, Openlands, The Wetlands Initiative
Lee	Natural Land Institute, Openlands
Livingston	Openlands
Logan	The Wetlands Initiative
Macon	The Wetlands Initiative

Macoupin	The Wetlands Initiative
Madison	Heartlands Conservancy
Marshall	Ducks Unlimited, The Wetlands Initiative
Mason	Ducks Unlimited, The Wetlands Initiative
Massac	Ducks Unlimited, Illinois Audubon Society
McDonough	Prairie Land Conservancy, The Wetlands Initiative Barrington Area Conservation Trust, Land Conservancy of McHenry County, Openlands, The Wetlands Initiative
McHenry	
McLean	ParkLands Foundation, The Wetlands Initiative
Menard	Ducks Unlimited, The Wetlands Initiative
Monroe	Clifftop, Ducks Unlimited, Heartlands Conservancy
Montgomery	The Wetlands Initiative
Morgan	Ducks Unlimited, The Wetlands Initiative
Ogle	Natural Land Institute, Openlands
Peoria	Ducks Unlimited, The Wetlands Initiative
Piatt	Grand Prairie Friends, Land Conservation Foundation, The Wetlands Initiative
Pike	Prairie Land Conservancy, The Wetlands Initiative
Pope	Ducks Unlimited, Illinois Audubon Society
Pulaski	Ducks Unlimited
Putnam	Ducks Unlimited, The Wetlands Initiative
Randolph	Clifftop, Ducks Unlimited, Heartlands Conservancy
Rock Island	Natural Land Institute
Saline	Ducks Unlimited, Illinois Audubon Society
Sangamon	The Wetlands Initiative
Schuyler	Prairie Land Conservancy, The Wetlands Initiative
Scott	Ducks Unlimited, The Wetlands Initiative
Shelby	The Wetlands Initiative
St. Clair	Clifftop, Ducks Unlimited, Heartlands Conservancy
Stephenson	Natural Land Institute
Tazewell	Ducks Unlimited, The Wetlands Initiative
Union	Ducks Unlimited, Illinois Audubon Society
Vermilion	Grand Prairie Friends, Land Conservation Foundation, The Wetlands Initiative
Warren	Prairie Land Conservancy, The Wetlands Initiative
Washington	Heartlands Conservancy
Whiteside	Natural Land Institute.
Will	Openlands, The Conservation Foundation, The Wetlands Initiative
Williamson	Ducks Unlimited, Illinois Audubon Society
Winnebago	Natural Land Institute, Openlands
Woodford	ParkLands Foundation, The Wetlands Initiative

Statewide Land Trusts serve counties of Clark, Clay, Crawford, Cumberland, Edwards, Effingham, Fayette, Franklin, Hamilton, Jackson, Jasper, Jefferson, Lawrence, Marion, Mercer, Moultrie, Perry, Richland, Stark, Wayne, White, Wabash







*Prairie State Conservation Coalition.* We help people protect Illinois' special places. Please contact any individual member conservation land trust directly for more information about their work.

For more information on the Prairie State Conservation Coalition and to find a conservation land trust working in your area, please visit:

[www.prairiestateconservation.org](http://www.prairiestateconservation.org)



**PRAIRIE STATE  
CONSERVATION  
COALITION**

*Making Conservation Land Trusts Stronger*