

Land Trust Alliance

Prairie State Conservation Coalition

Starved Rock State Park Lodge

March 2, 2017





Introductions



Judith Stockdale
Board Director
S&P Revisions Core Team
judithstockdale1@gmail.com



Bryan David
Government Relations Specialist
(202) 800-2223
bdavid@lta.org

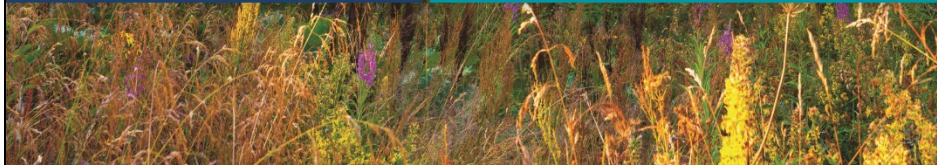
What's New? Updates

- Census 2015
- Land Trust Standards Revisions
- Accreditation
- Advocacy Days in D.C. May 1-3
- 2017 Training Opportunities



LAND TRUST ALLIANCE
.....
2015 NATIONAL
LAND TRUST
CENSUS

Add Your Voice to Complete the Story



2015 NATIONAL LAND TRUST CENSUS AT A GLANCE



56 MILLION

Total acres conserved by state, local and national land trusts as of year-end 2015—an increase of 9 million acres since 2010



72%

Percent of land owned by land trusts that allows public access



6,250,000

Number of visitors to land trust properties in 2015



77%

Percent of total acres owned and under easement held by an accredited land trust



5x

Accredited land trusts **added more staff capacity** and **protected five times as much land** as eligible, non-accredited land trusts.



8,184

Full-Time and Part-Time Staff



15,779

Board Members



207,646

Other Active Volunteers



4.6 MILLION

Members & Financial Supporters



\$588 MILLION

Dedicated funding for stewardship and legal defense



\$2.18 BILLION

Amount in endowments and dedicated funding managed by state, local and national land trusts

Land Trusts' Top Three Conservation Priorities:



Important natural areas or wildlife habitats




Water quality, including wetlands




Working farms or ranchlands

NATIONAL LAND TRUST CENSUS

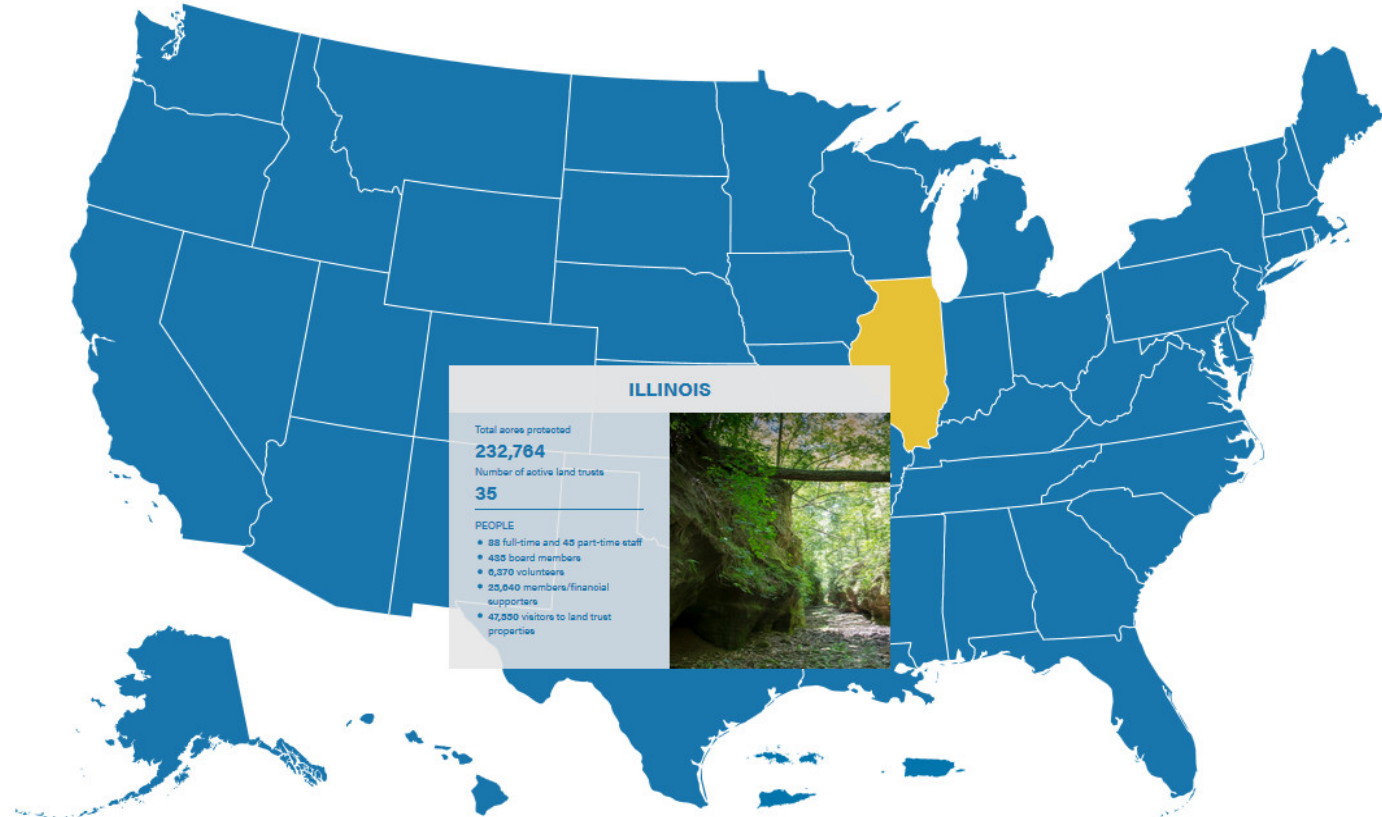
Every five years, the Land Trust Alliance conducts a national census to measure the collective impact land trusts have on their communities and in every region of the country. The results of the 2016 Census were released in November 2016 with data through December 31, 2015.

 Hover over a state to see a summary snapshot.

 Click on a state to view detailed Census results.

View results for entire U.S.

ENTIRE U.S. RESULTS



Select a state to view detailed Census results

SELECT A STATE -

United States at a Glance

1,363

Number of active land trusts

56,434,181

Total acres protected

8,184

Full-time and part-time staff

608

Photos of community impact

ILLINOIS



232,764

Total acres protected

35

Number of active land trusts

3

Number of accredited land trusts



- 88 full-time and 45 part-time staff
- 435 board members
- 6,370 volunteers
- 25,640 members/financial supporters

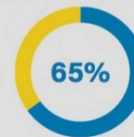
Acres of Land Protected

	2010	2015
 Under easement	16,334	23,906
 Owned	58,472	64,550
 Acquired and reconveyed	67,724	73,738
 Protected by other means	69,706	70,572
 Total acres protected	212,236	232,764

A conservation easement (also known as a conservation restriction or conservation agreement) is a voluntary, legal agreement between a landowner and a land trust or government agency that permanently limits uses of the land in order to protect its conservation values. Acres conserved by other means refers to land protected as a result of the activities of the land trust, but which the land trust did not directly acquire in fee or under easement. In some instances, the total may be greater than the sum of the separate categories due to organizations that provided total acres not broken down by category.

Percent of Conserved Land

Held by an accredited land trust (i.e., total acres under easement and owned)



Land Service Area Breakdown

(Respondents could select more than one category)



53%
URBAN



93%
SUBURBAN



87%
RURAL



Public Access

Acres owned by land trusts with public access

81%

Number of visitors to land trust properties per year

47,550

Every parcel of land conserved by land trusts provides a benefit to the public. While the majority of land owned by Alliance-member land trusts allow public access for outdoor recreation and educational uses, not all land is suitable for public access. For example, when protecting sensitive habitats for wildlife or plant species, public access could damage the resource that is being protected. If a land trust owns working lands—farms, ranches, or forest land—that are under active management, it may not be safe or consistent with resource management to provide public access. Public access figures are estimated, reflecting data from Alliance-member land trusts.

TOP 3 Conservation Priorities

- 1** Important natural areas or wildlife habitats
- 2** Water quality, including wetlands
- 3** Scenic views or landscapes

Land Trust Maturity



Oldest: 1897



Youngest: 2007



Median age: 27



State Population

Total population

12,859,995

Change in population from 2010-2015

0.20%

(National is 4.10%)

Land Trust State Association

Prairie State Conservation Coalition



www.prairiestateconservation.org



Photo Gallery



9/19

Photo courtesy of Land Conservancy of McHenry County (IL)/Lisa Haderlein, photographer



Land Lost to Development

60,400

acres from 2007-2012

NRCS: Natural Resources Inventory



Public Funding for Conservation

\$1,529,443,623

total from 1998-2011

Trust for Public Land's Conservation Almanac

Did You Know?



Illinois is flat and fertile due to glaciation. The glaciers that carved out the Great Lakes left deposits of loess that would form soils perfect for growing crops (soil rich in minerals with a uniform texture that retains moisture). This soil is so important to the Illinois economy that in 2,001 they named the loess-based Drummer soil series their official state soil.

Sources

Land Trust Alliance 2015 National Land Trust Census

United States Census Bureau



Excellence • Trust • Permanence

Excellence

Implementing Standards & Practices

372 Accredited Land Trusts Nationwide

- 77% of conserved land

41 Accredited Land Trusts in Midwest

- 10 Renewal of Accreditation (5 yrs.)*

3 in Illinois (soon to double...)

- Lake Forest Open Lands Association*
- Jo Daviess Conservation Foundation
- Openlands



2018 Applications

First Time	Round 1	Round 2
Pre-application Due	January 24	June 21
Application Due	April 13	September 21

First-time
registration
opens in *June*

Renewal	Round 1	Round 2
Pre-application Due	April 4	September 12
Application Due	June 6	November 16

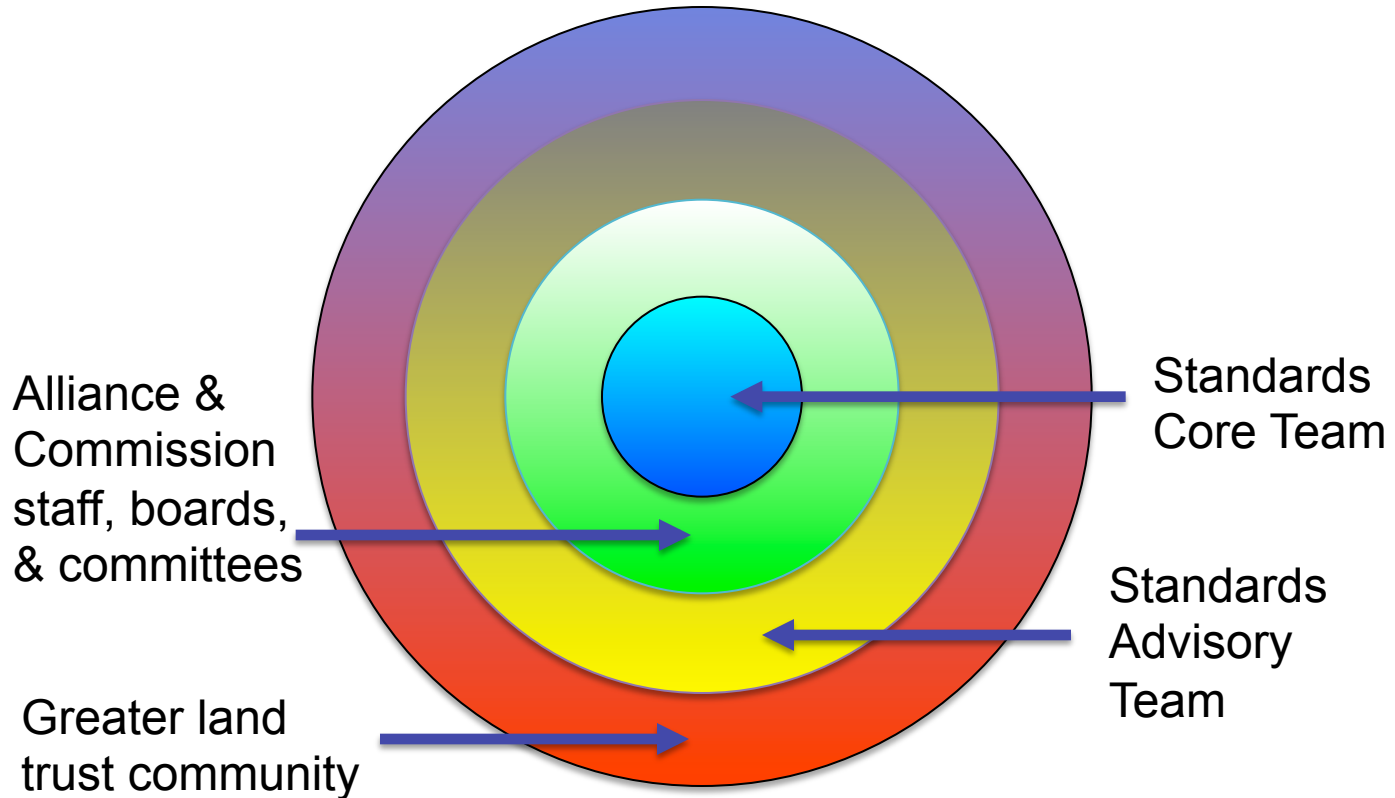
No first-time
registrations
in 2019

Land Trust Standards and Practices

Goals of 2016-17 Revisions Process

- Engage all land trusts in the work of pursuing excellence and continuous improvement
- Make S&P accessible for entire land trust community
- Update to reflect changes in legal and operational environment
- Ensure alignment with accreditation, Terrafirma and other resources and tools

Role of Stakeholders



Community Input: What We Heard

- About 1,600 individual comments from more than 450 different stakeholders
- Multiple ways to participate:
 - In person, including at state association mtgs.
 - Online discussion platform
 - Email comments
- Complete cross-section of the land trust community
 - everyone was represented

2017 Standards Approved

- Land Trust Alliance Board approved 2/3/17
- eNews announcement 2/15/17
 - Materials available (handouts)



2017 Standards Revisions

- **12-standards framework sound**
- **More readable and streamlined document**
 - Focuses on practices that apply *broadly* to land trust *community*
 - Improves clarity, reduces redundancy
 - Organizes the practices into *elements*

2017 Standards Revision

- **Designed as online resource**
 - Clearly highlights those items that lead to accreditation
 - Linked to Alliance resources, narratives and requirements



Join Us

- Together we will advance change and increase impact for land conservation
- **Registration deadline is March 31**
there's still time – see Bryan or Carolyn



LAND TRUST ALLIANCE
AMBASSADORS



Celebrating Together



Trainings / Webinars

Alliance Webinar 2017 Calendar

- *Printed copy and www.lta.org/webinars*

Midwest Ask-an-Expert Calls

- *Invest an hour with your colleagues*

Rally 2017 Denver – October 26-29

Midwest Ask-an-Expert Calls

Fridays | 11 AM – 12 noon Central time

Sign-up by sending an email to **midwest@lta.org**

- **MARCH 10** – Successful Transitions: Are you Ready?
with Mary Stelletello
- **APRIL** – Policy Advocacy

Thank you

