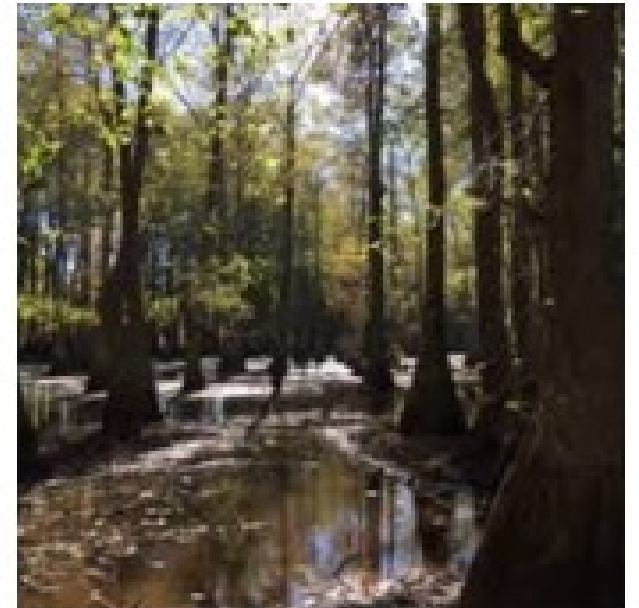


# PRIVATE LAND CONSERVATION IN ILLINOIS

## 2018 YEAR IN REVIEW

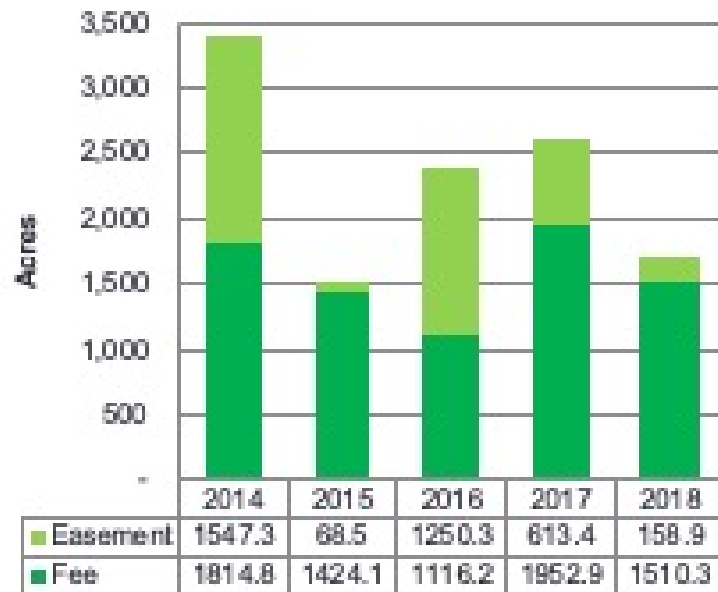
---



# Nonprofit Land Protection Projects - 2018

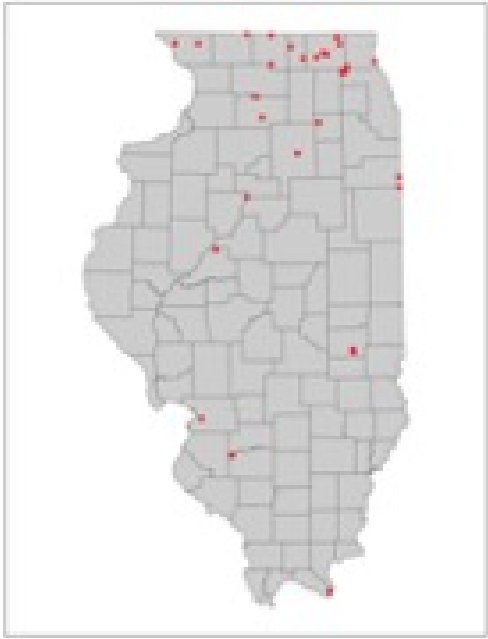
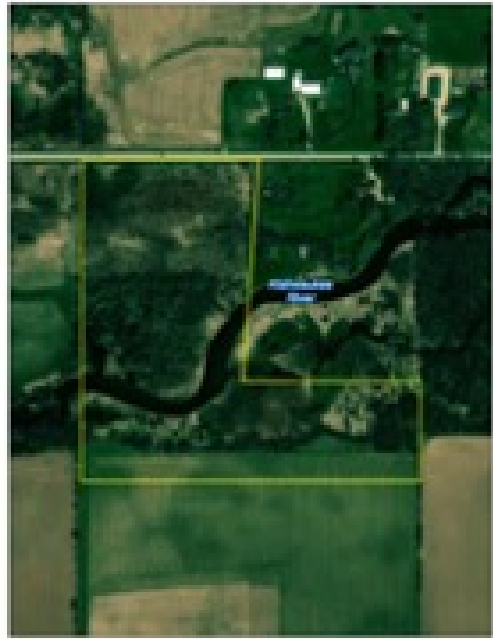
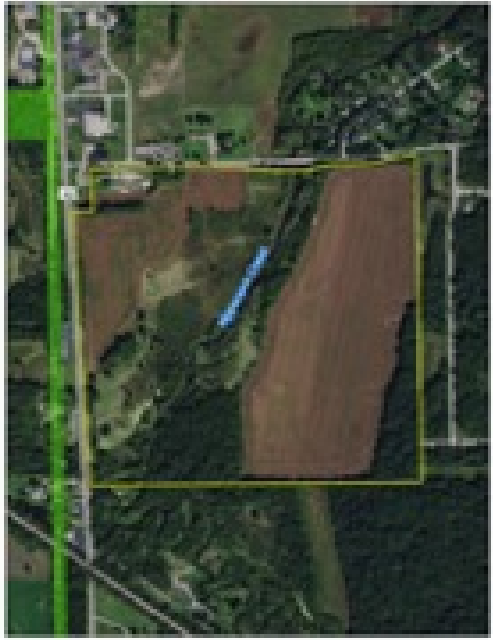
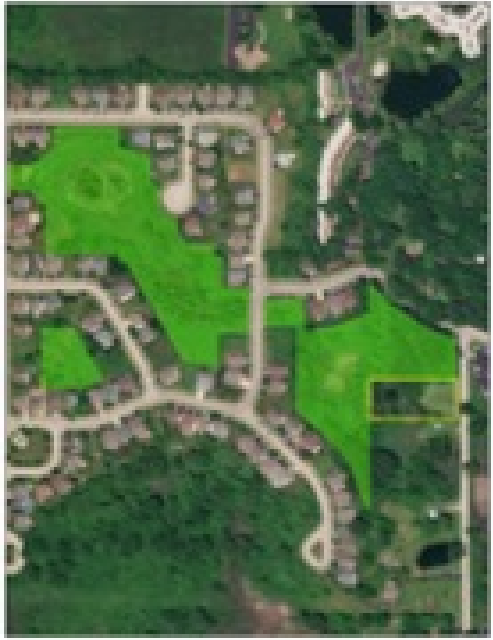
## Projects by Size

< 10 acres:	8
10-50 acres:	8
50-100 acres:	0
100-150 acres:	6
150+ acres:	3



## Land Protection (acres)







**Organization:** Citizens for Conservation

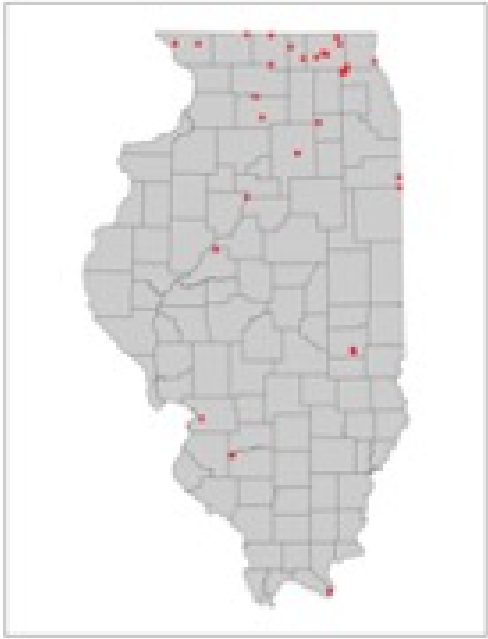
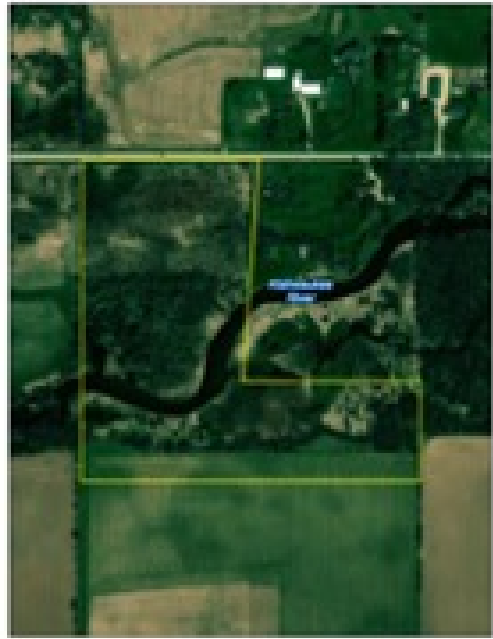
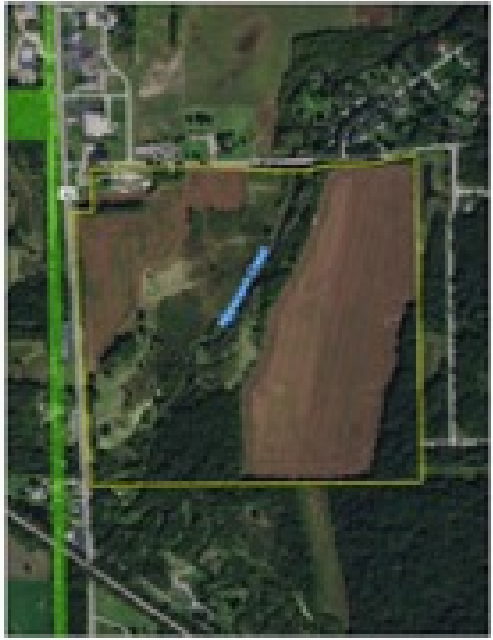
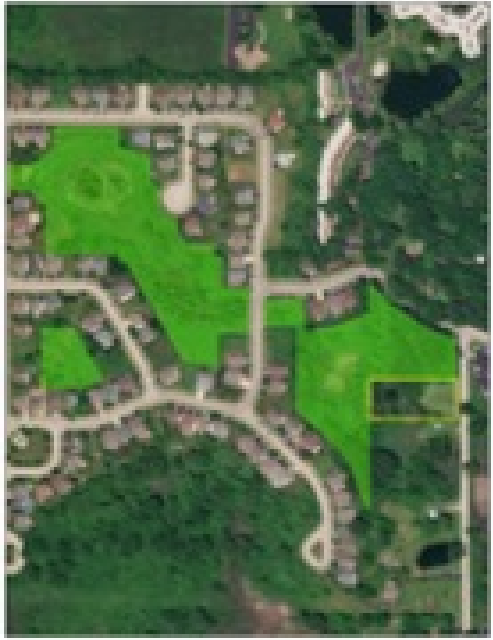
**Protection Mechanism:** *Reverse Buy and Flip*

**Project Name:** Flint Creek

**Size\*:** 4.183 acres

\* Additional 15.8 acres owned by municipality are also protected.







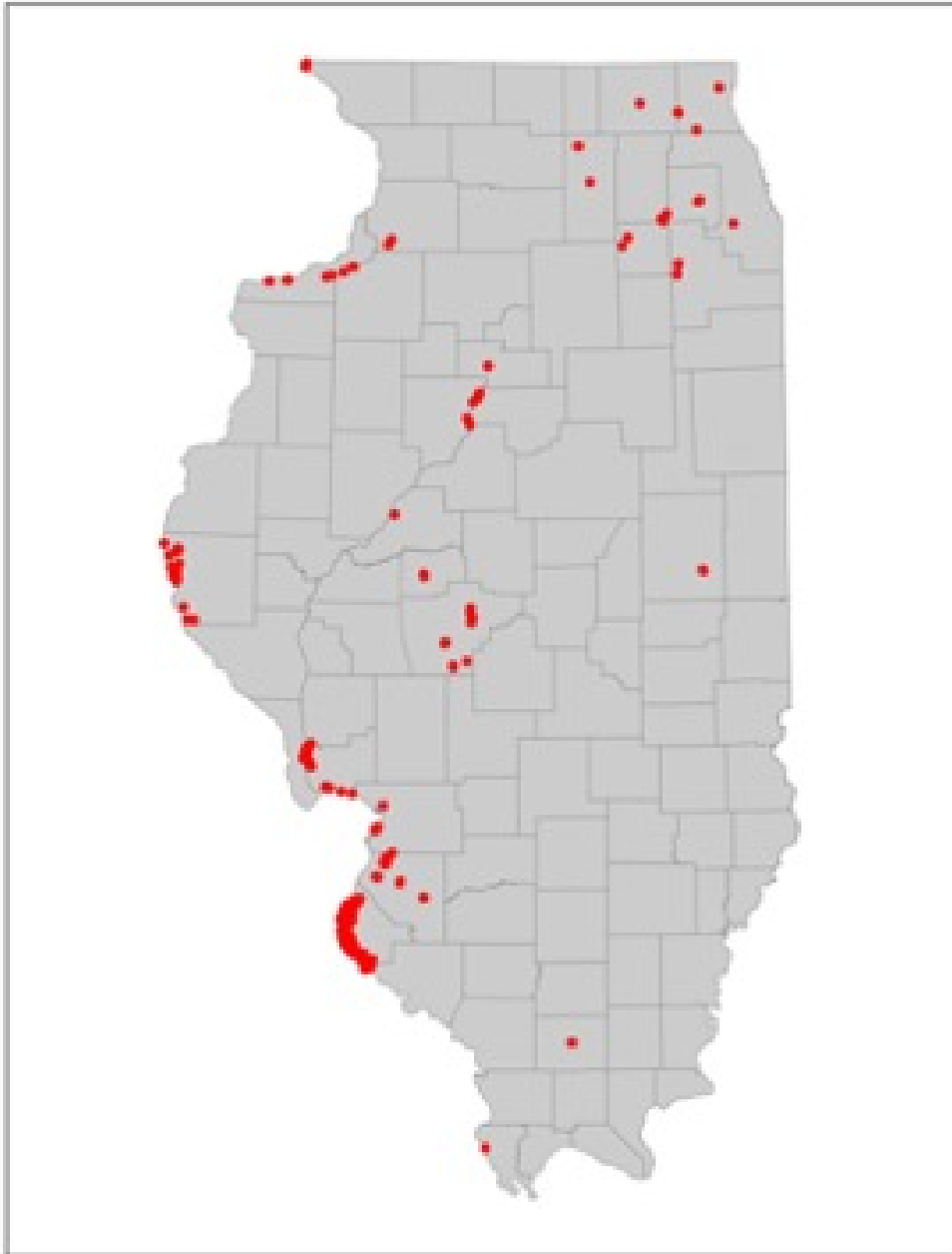
**Organization:** The Land Conservancy of McHenry County

**Protection Mechanism:** *Hazard Mitigation Grant Program*

**Project Name:** Concannon

**Size:** 1.14 acres (addition to a 1.79 acre property, and adjacent to two easements totaling 12.25 acres)





**Organization:** The Land Conservancy of McHenry County

**Protection Mechanism:** *Hazard Mitigation Grant Program*

**Project Name:** Concannon

**Size:** 1.14 acres (addition to a 1.79 acre property, and adjacent to two easements totaling 12.25 acres)





**Organization:** The Land Conservancy of McHenry County

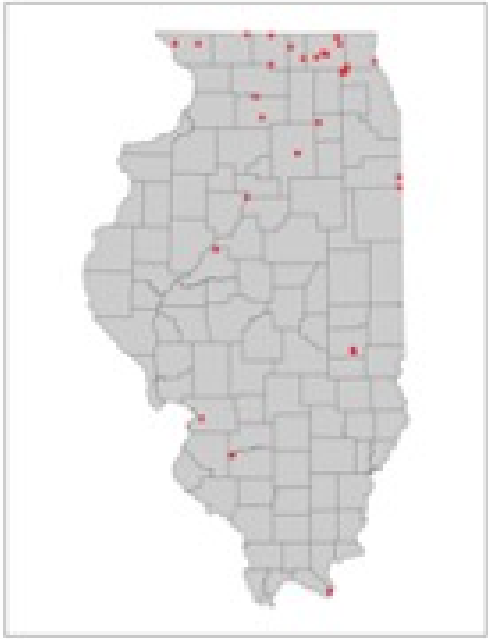
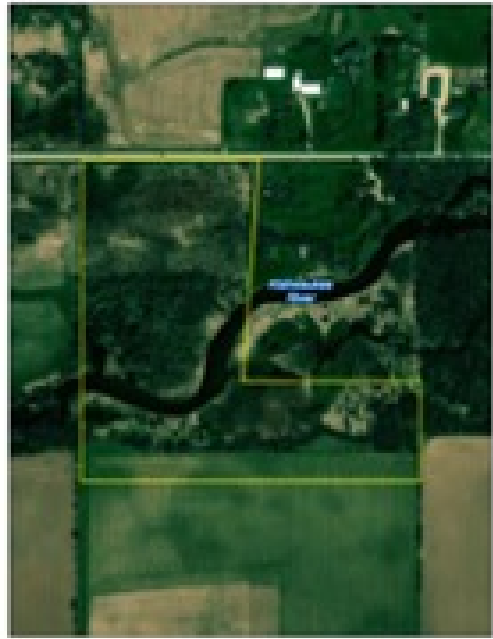
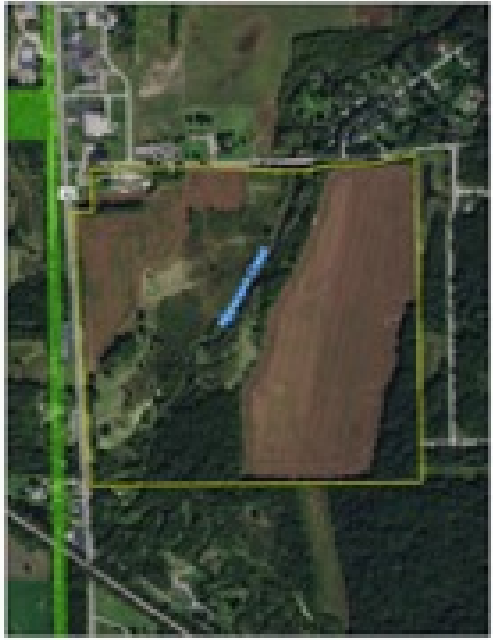
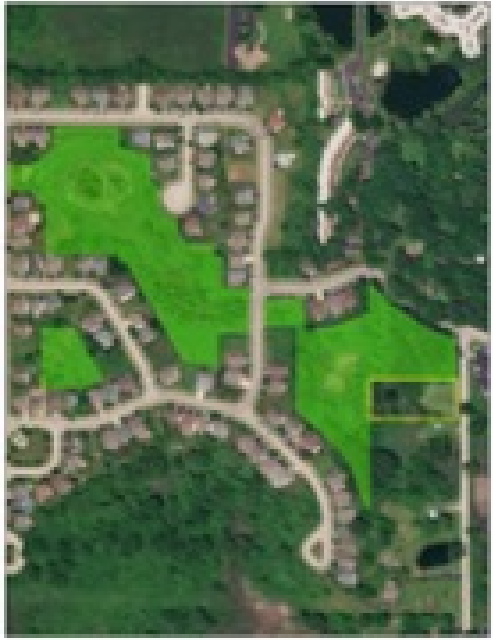
**Protection Mechanism:** *Hazard Mitigation Grant Program*

**Project Name:** Concannon

**Size:** 1.14 acres (addition to a 1.79 acre property, and adjacent to two easements totaling 12.25 acres)









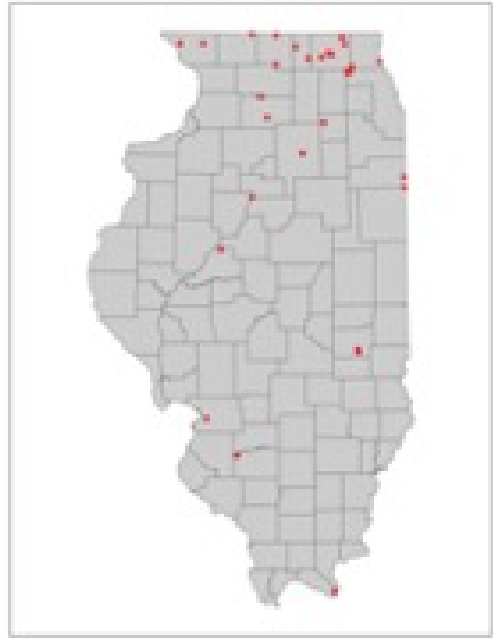
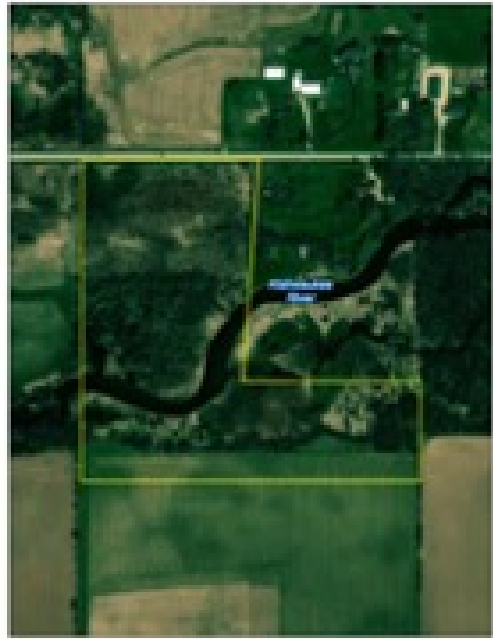
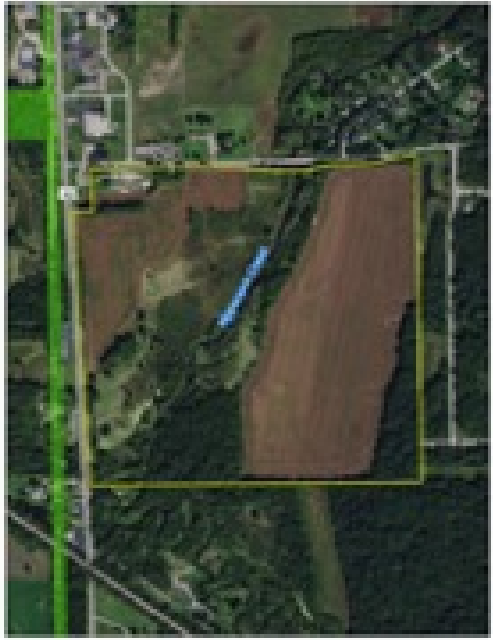
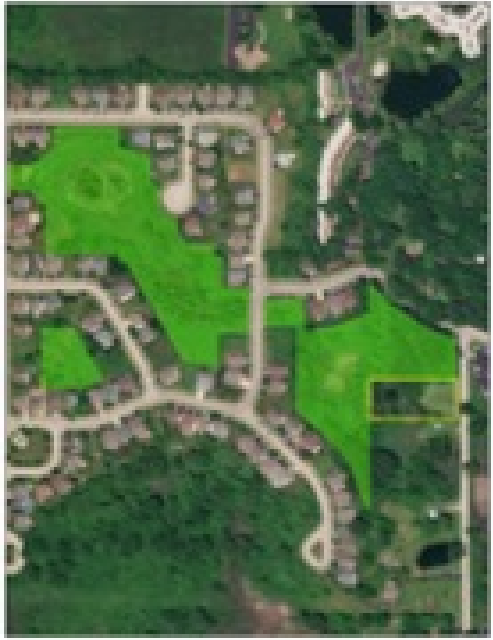
**Organization:** Openlands

**Protection Mechanisms:** *Buy-Protect-Sell*

**Project Name:** B10/Silberhorn Conservation Area

**Size:** 24.51 acres







**Organization:** Lake Forest Open Lands Association

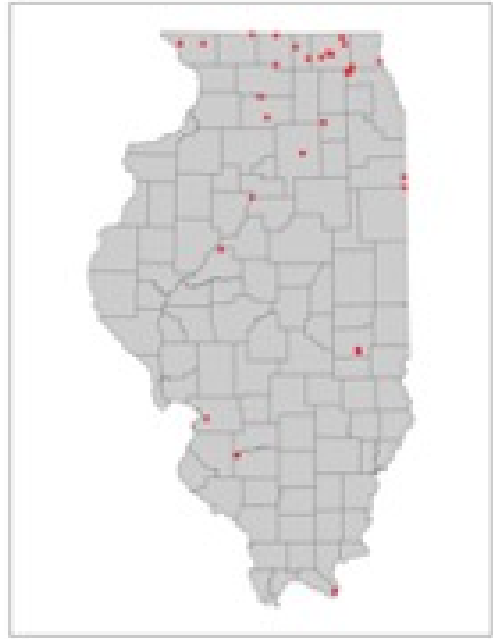
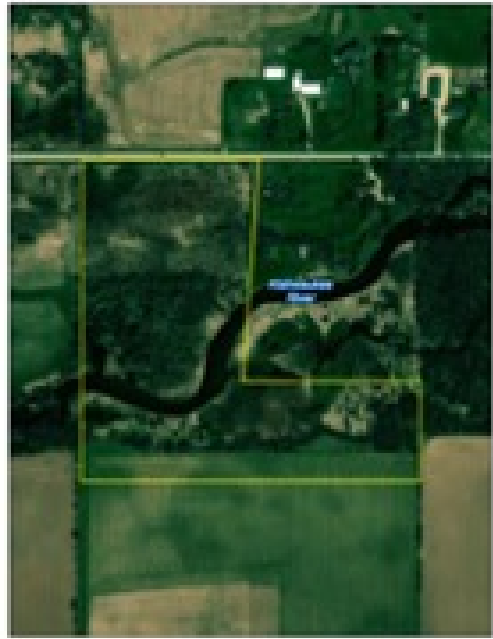
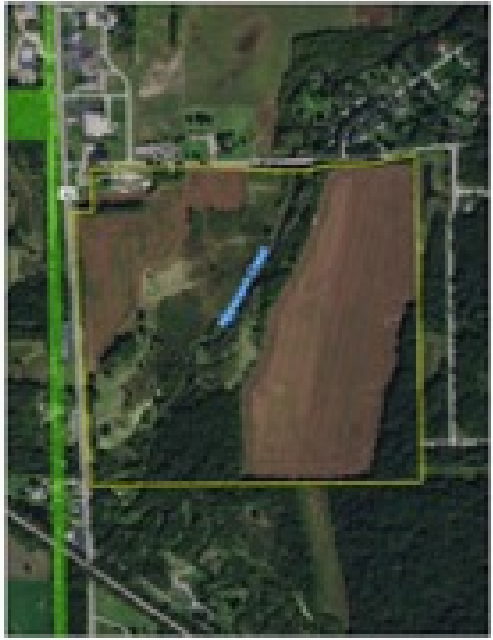
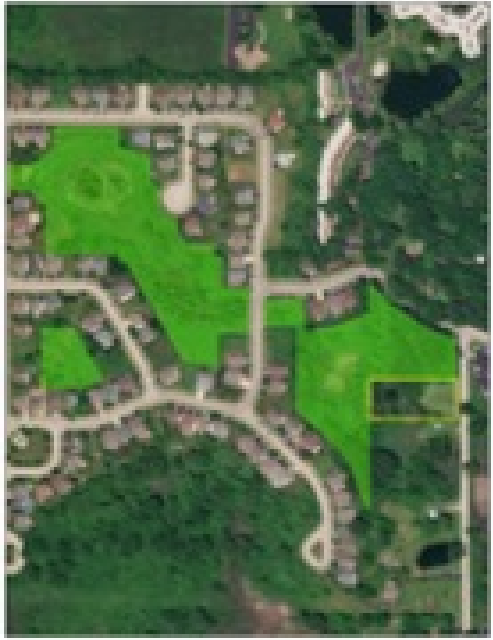
**Protection Mechanism:** *Land Exchange*

**Project Name:** McCormick Ravine

**Size\*:** 36.435 acres (fee-owned), 16.4 acres (easement)

\* Additional 8.2 acres owned by municipality also part of park







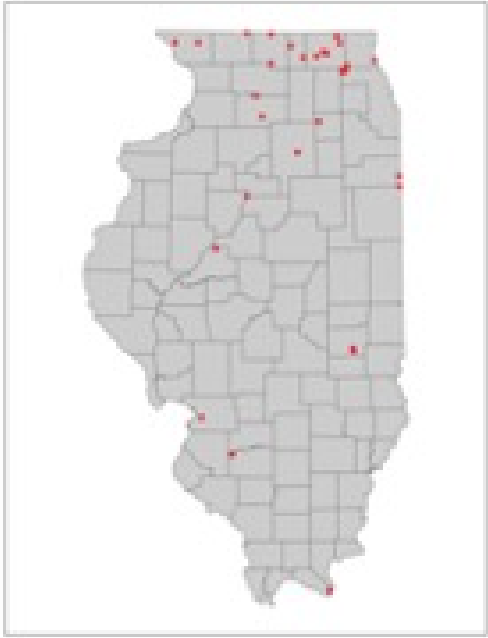
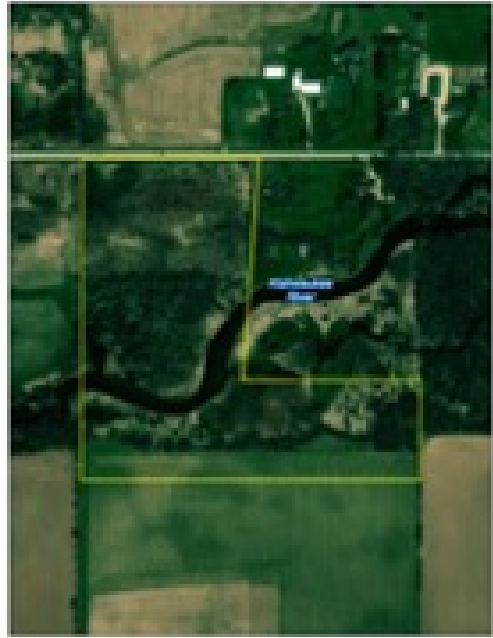
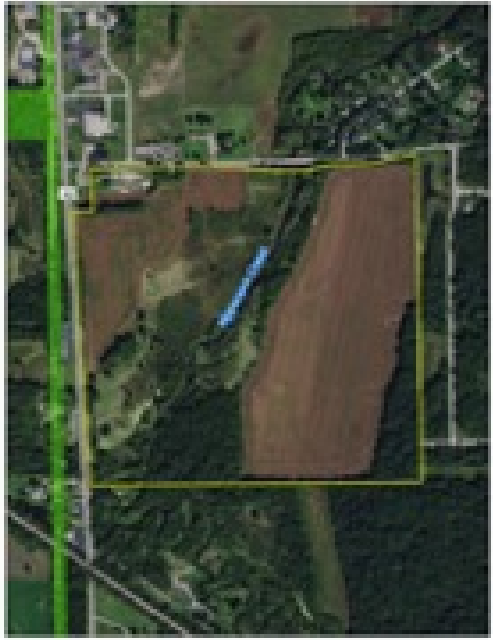
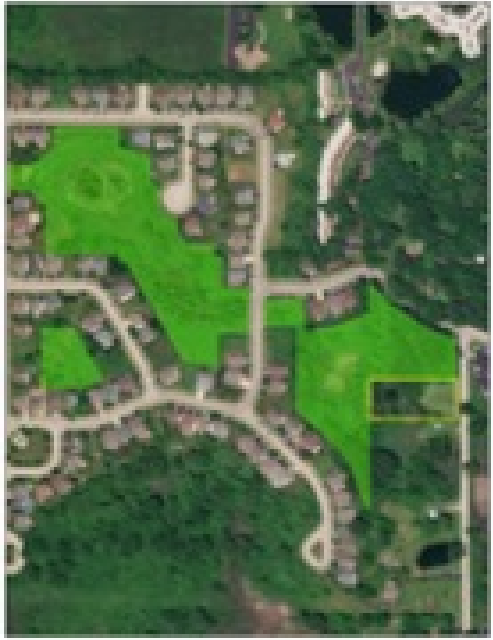
**Organization:** The Land Conservancy of McHenry County, Openlands

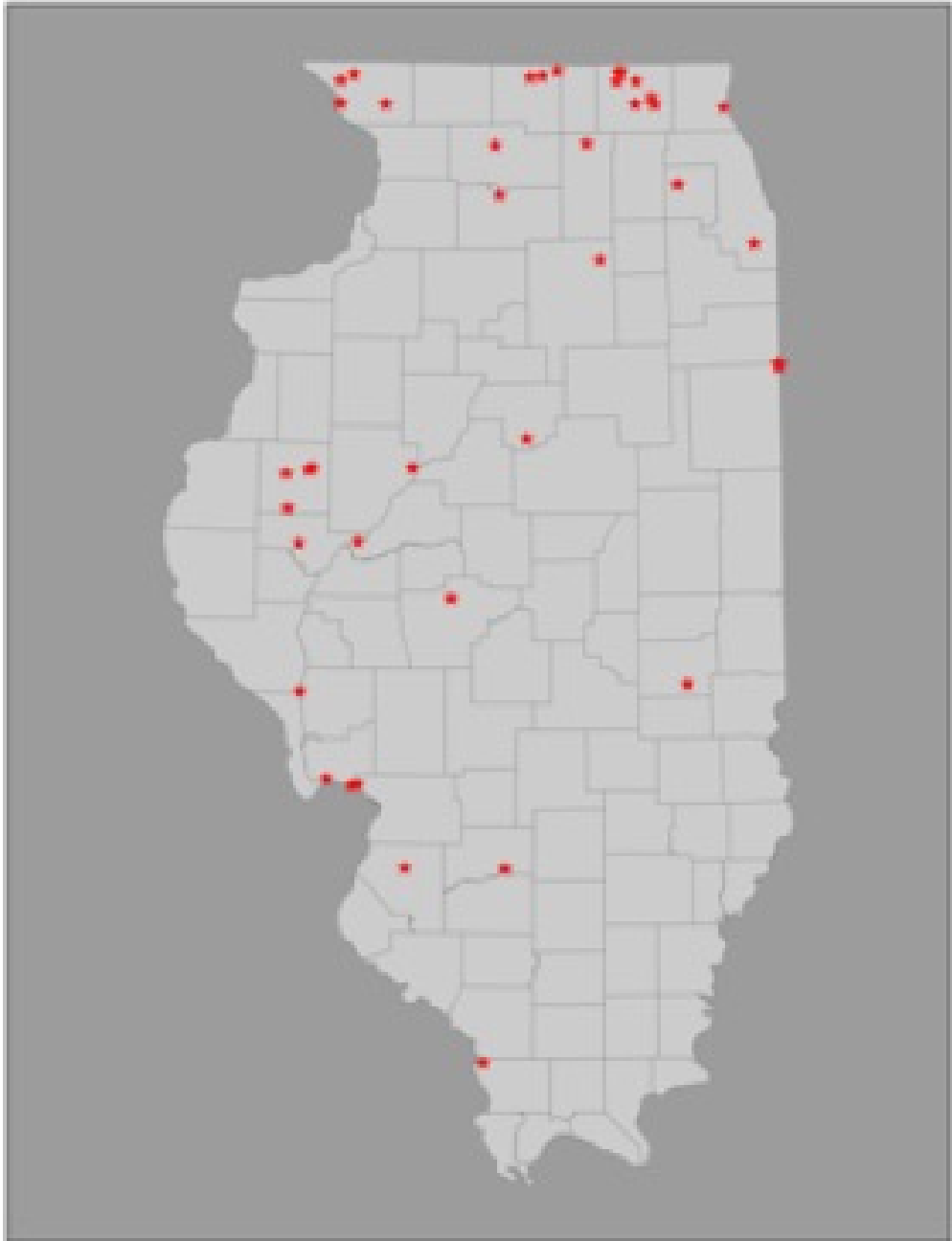
**Protection Mechanism:** USDA Agricultural Conservation Easement Program

**Project Name:** Hoffman Farm

**Size:** 150.96 acres







*Fin*

