

Photo credit: Rich Mattas



THE STATE OF LAND STEWARDSHIP IN ILLINOIS

PSCC Annual Meeting
February 27-28, 2020

Introductions



Kerry Leigh
Natural Land Institute



Jim Johannsen
Jo Daviess Conservation Foundation



Lindsay Keeney
Illinois Environmental Council



Andrew Szwak
Openlands



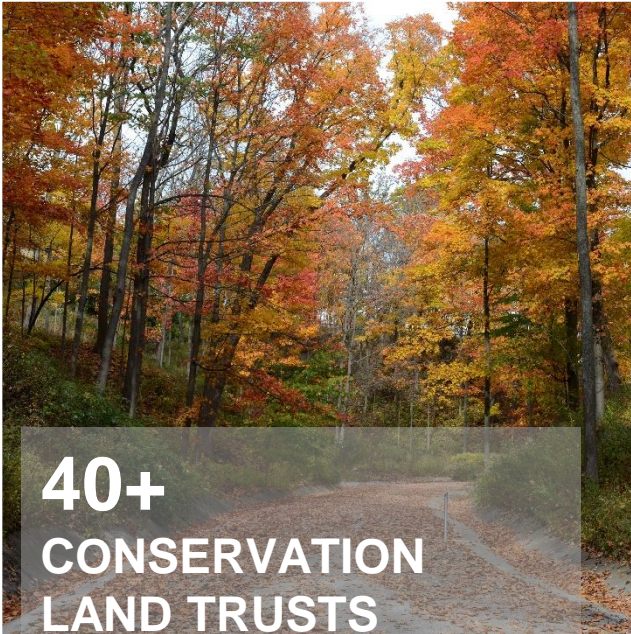
Olga Lyandres
Delta Institute



**1.5 M ACRES OF
PROTECTED LAND**



**\$4.4B
CONSERVATION
NEED**



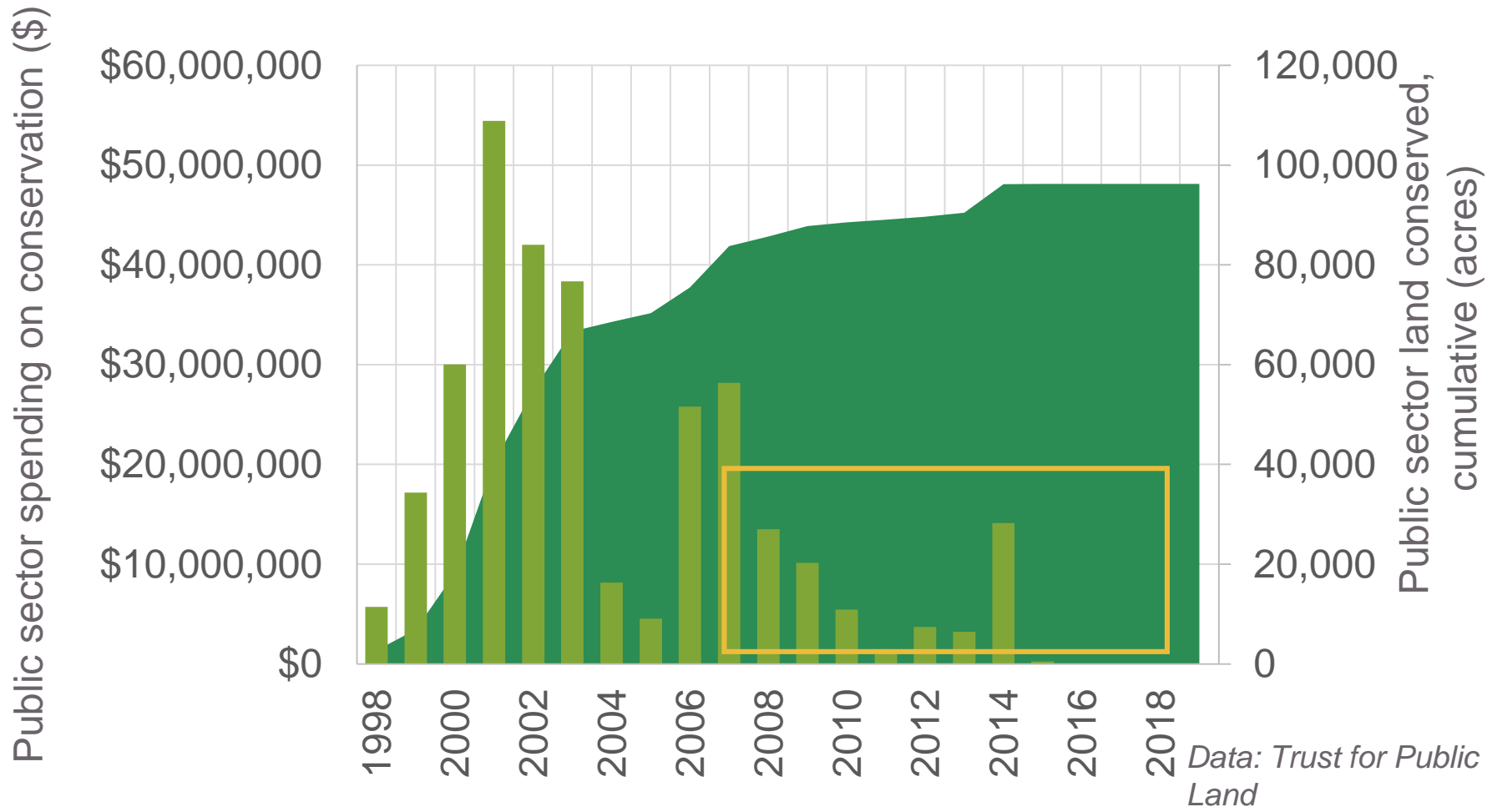
**40+
CONSERVATION
LAND TRUSTS**



**26.6M ACRES OF
ROW CROPS**

CONTEXT	STUDY RESULTS	TOOLS OVERVIEW	NEXT STEPS	Q & A
---------	---------------	----------------	------------	-------

CONSERVATION IN THE PUBLIC SECTOR



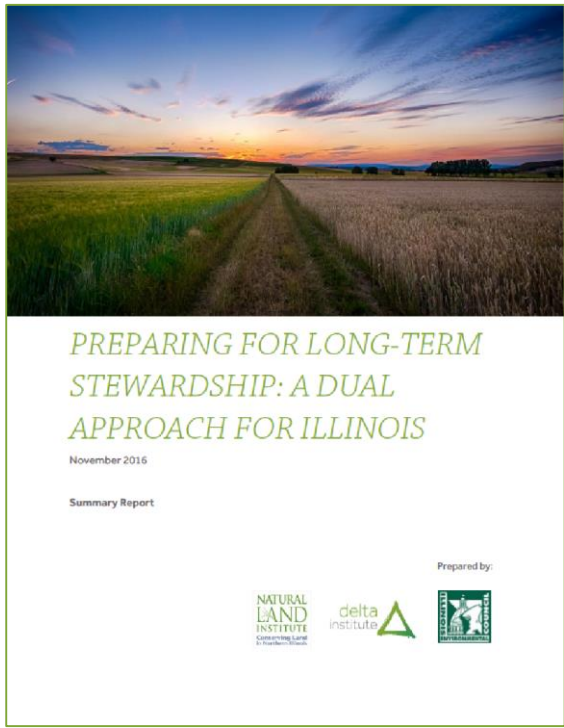
SHIFTING MODELS

Approximately over the last 50 years,
77% of acres acquired by land
trusts were transferred for
management by other agencies

In 2008-2018, **16%** of acres
acquired were transferred



PREVIOUS WORK



Regional partnerships that can optimize resources and capacity

Agricultural working lands investment cooperative

Land stewardship study and tools

CAPACITY



FUNDING



PARTNERSHIPS



POLICY



VISION



FARMLAND



CONTEXT	STUDY RESULTS	TOOLS OVERVIEW	NEXT STEPS	Q & A
---------	----------------------	----------------	------------	-------

Investigated:

- Positions involved in stewardship
- Roles staff play
- Stewardship labor costs



CAPACITY

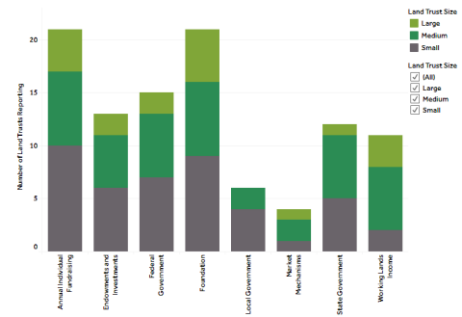


Explored:

- Current funding sources
- Innovative funding approaches

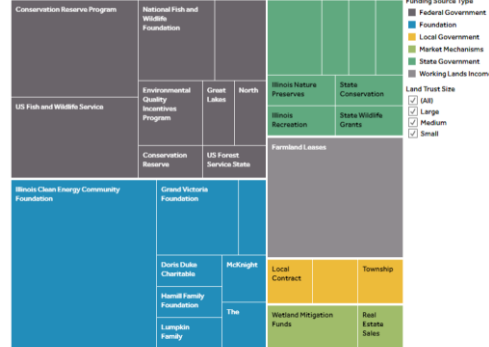
< Funding Types Funding Sources Endowments >

Funding Types



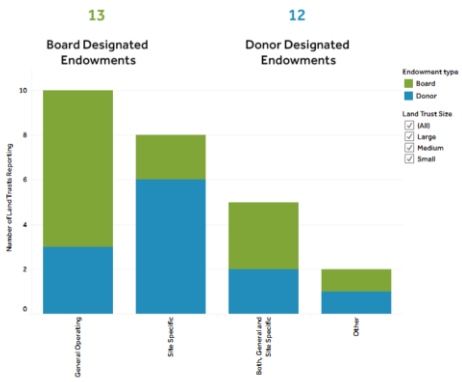
< Funding Types Funding Sources Endowments >

Funding Sources



< Funding Types Funding Sources Endowments >

Endowments



FUNDING



<https://stewardship.delta-institute.org/key-findings>

Working lands pilot case-study

FARMLAND



AN ILLINOIS CONSERVATION LAND TRUST TAKES A LEAP OF FAITH

DEVELOPING A WORKING LANDS INITIATIVE FOR FUNDING LONG TERM STEWARDSHIP

Natural Land Institute's Big Experiment

1

Appendix 3
Financial Feasibility Analysis

Financial Analysis of the Feasibility of a Working Lands Model for Conservation Organizations

4/1/2019

NATURAL LAND INSTITUTE
Conserving Land in Northern Illinois

Hyphae Partners
Integrative Capital Solutions

30

Appendix 5
Foss Farm Whole Farm Conservation Plan

NATURAL LAND INSTITUTE: FOSS FARM

WHOLE FARM CONSERVATION PLAN 2019

93

Civics for Environmentalists

CONTENTS

- How Springfield works.....
- Your most important resource
- Legislative Timelines
- The Story of a Bill (the very basics)
- Drafting, Introducing, and Advancing a Bill.....
- Change through Administrative Rules.....
- Engaging with decision makers.....
- Why you should build relationships with elected officials
- Other decision makers to build relationships with:.....
- What exactly is lobbying
- Non-Lobbying Work
- Should you register as a lobbyist?
- Conservation policy overview.....
- Agency Funding.....
- Fund Sweeps
- Other Conservation Policies
- 2019 Progress
- Future Policy Priorities.....
- Additional Resources List.....



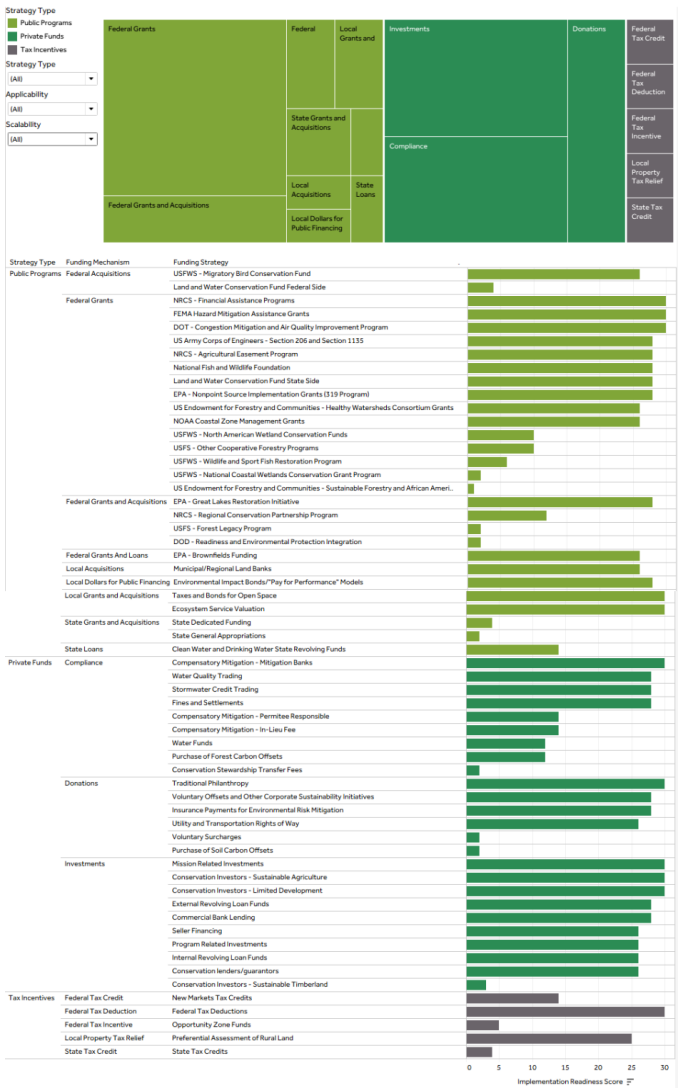
TOOLKIT: CIVICS FOR ENVIRONMENTALISTS

October 2019

Prepared by:

With Support from:

Conservation Funding and Financing Strategies



- Organized by types of funding, e.g. public, private
- Organized by funding mechanisms, e.g. grants, tax credits, etc.
- Organized by funding strategies, e.g. cost-share, revolving loan funds, offsets, etc.
- Further assessed for scalability, applicability, and implementation readiness
- Provides links to examples or related resources

stewardship.delta-institute.org/funding-matrix

- Share and apply study findings
- Strengthen partnerships
- Identify policy priorities
- Develop a working lands program business model

CONTEXT	STUDY RESULTS	TOOLS OVERVIEW	NEXT STEPS	Q & A
---------	---------------	----------------	-------------------	-------

- Check out all the data, study results, and tools online:
<https://stewardship.delta-institute.org/>
- Stop by or listen in at other events:
 - Vital Session: **Working Lands Case Study**
 - Tuesday, March 24, 1-2 pm
 - Vital Session: **Conservation Leasing**
 - Wednesday, April 29, 1-2 pm
 - Downstate caucus of the climate table, date TBD: session on **policy**
- Close out webinar, August 2020: what we learned together

CONTACT US

- Olga Lyandres, Delta Institute
olyandres@delta-institute.org
- Kerry Leigh, Natural Land Institute
kleigh@naturalland.org
- Jim Johannsen, Jo Daviess Conservation Foundation
jjohannsen@jdcf.org
- Andrew Szwak, Openlands
ASzwak@openlands.org
- Lindsay Keeney, Illinois Environmental Council
lkeeney@ilenviro.org