



Farmland Protection Priority Mapping in McHenry County


The Land Conservancy of McHenry County + David Holman
February 27, 2020 | Prairie State Conservation Coalition

The Context





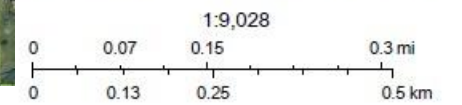
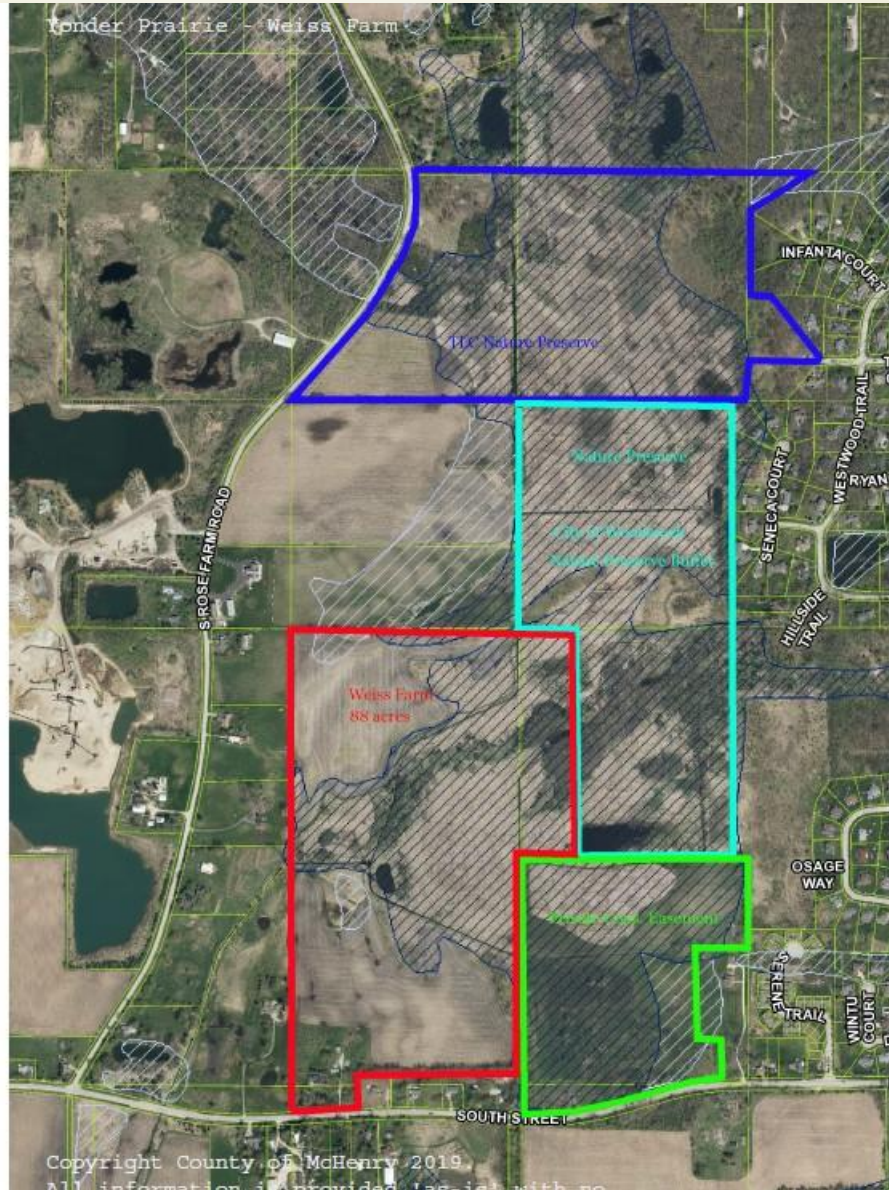
What's a priority?

- ▶ 2004: Prime Farmland
 - ▶ 2007: Prime Farmland that someone wanted to donate an agricultural easement on
 - ▶ 2017: Farmland where the landowner was willing to wait up to three years to complete an acquisition with the federal (ACEP) funds
 - ▶ 2020: Farmland that also contributes to broader conservation goals including habitat and water quality
- 



March 8, 2019


- Public Sector
- Private Sector
- Illinois Natural Areas Inventory
- Municipalities



USDA FSA, DigitalGlobe, GeoEye, CNES/Airbus DS



Priority Farmland includes

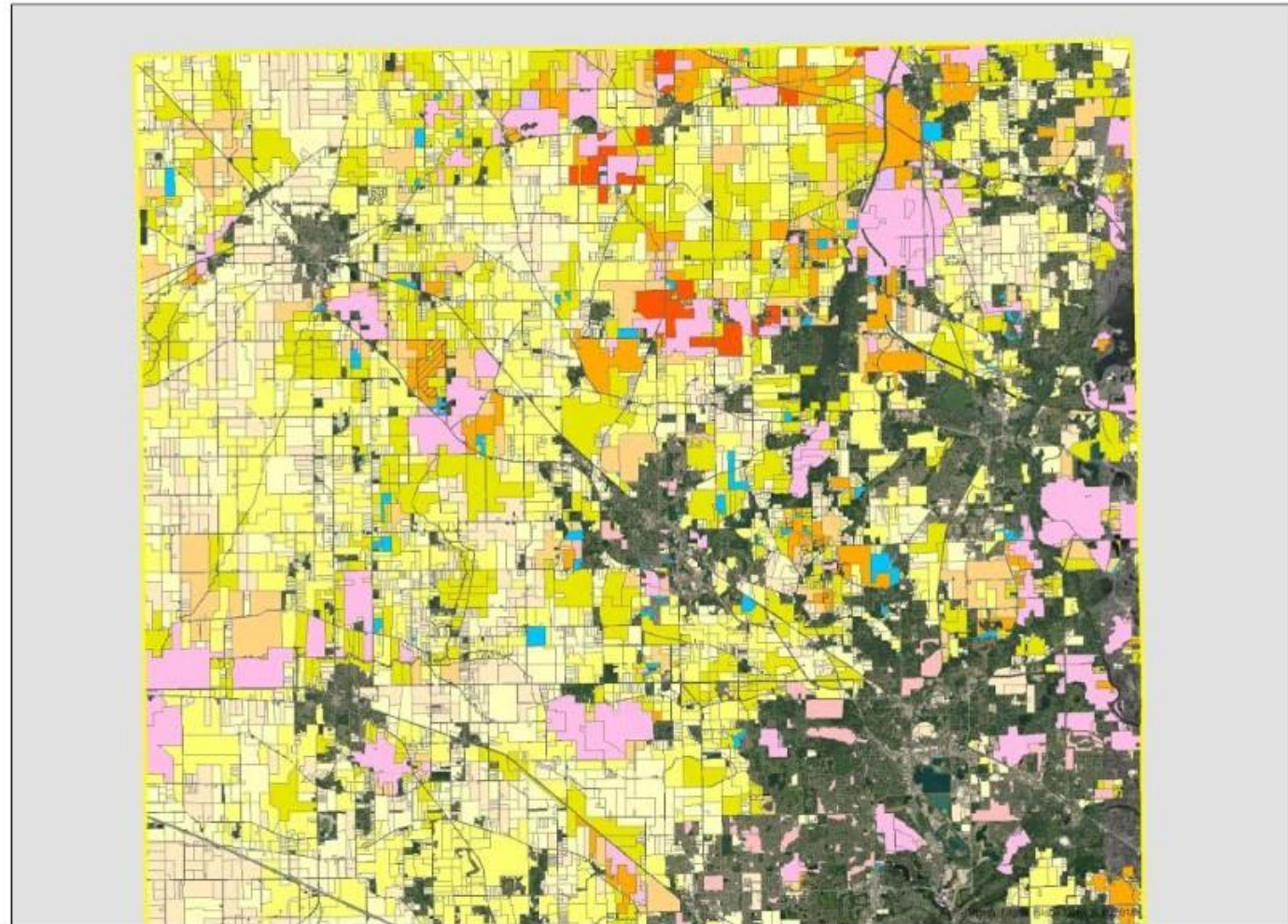
- ▶ Connectivity to protected land
 - ▶ Proximity to INAI & McNAI sites
 - ▶ Property includes natural resources or buffers them
 - ▶ Wetlands
 - ▶ Streams
 - ▶ Oak woods
 - ▶ Located in the Hackmatack NWR project area
- 



Kim & Dave worked some GIS magic!



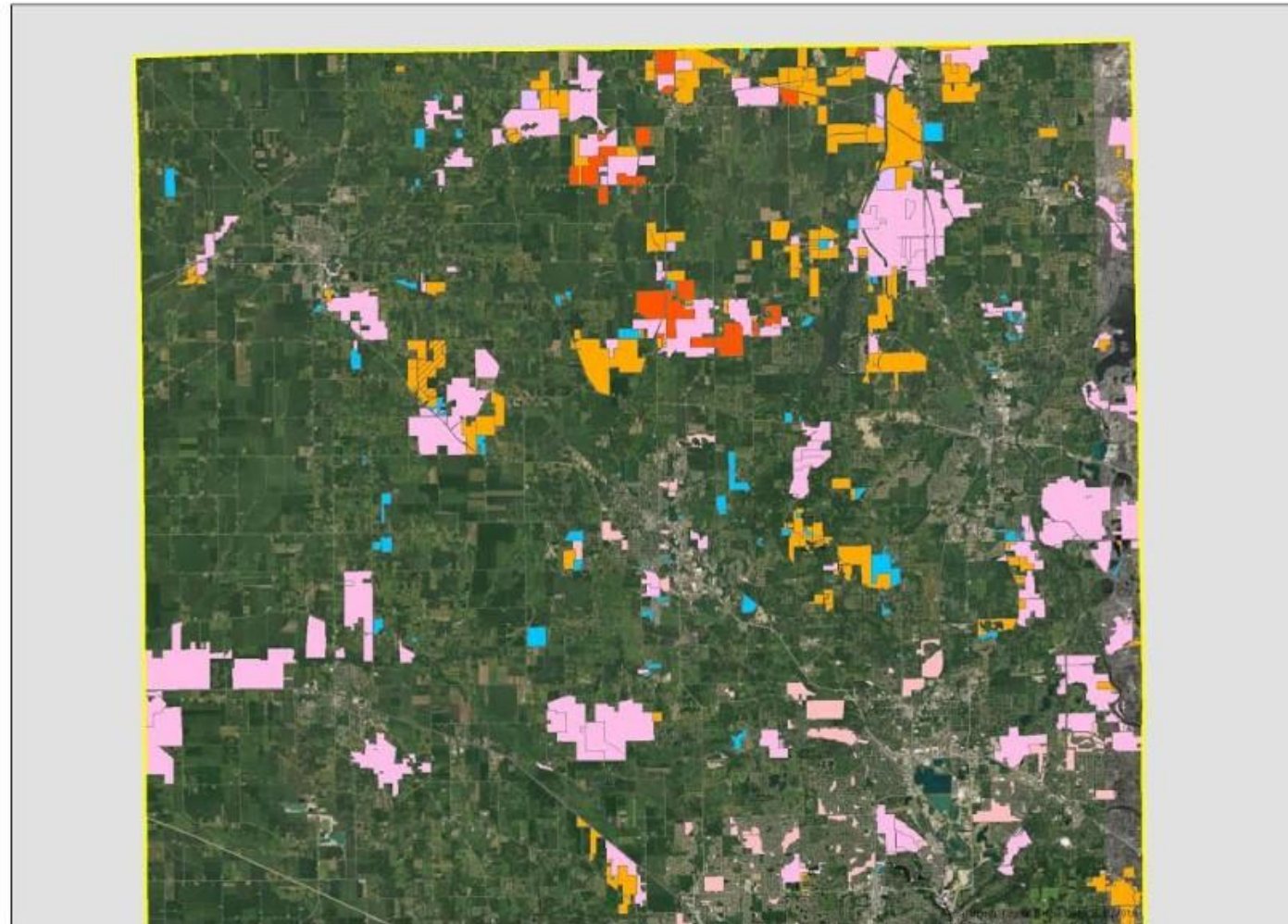
Farmland Prioritization McHenry County Illinois



- Legend**
- Blue: N/C
 - Pink: Private Inland
 - Light Pink: Municipal Parks
 - Light Blue: State Status Protection Commission
 - Light Yellow: Farmland Protection Prioritization - Complete
 - Light Green: High Value Values
 - Total
 - 4
 - 1
 - 2
 - 3
 - 4
 - 5
 - 6



Farmland Prioritization McHenry County Illinois

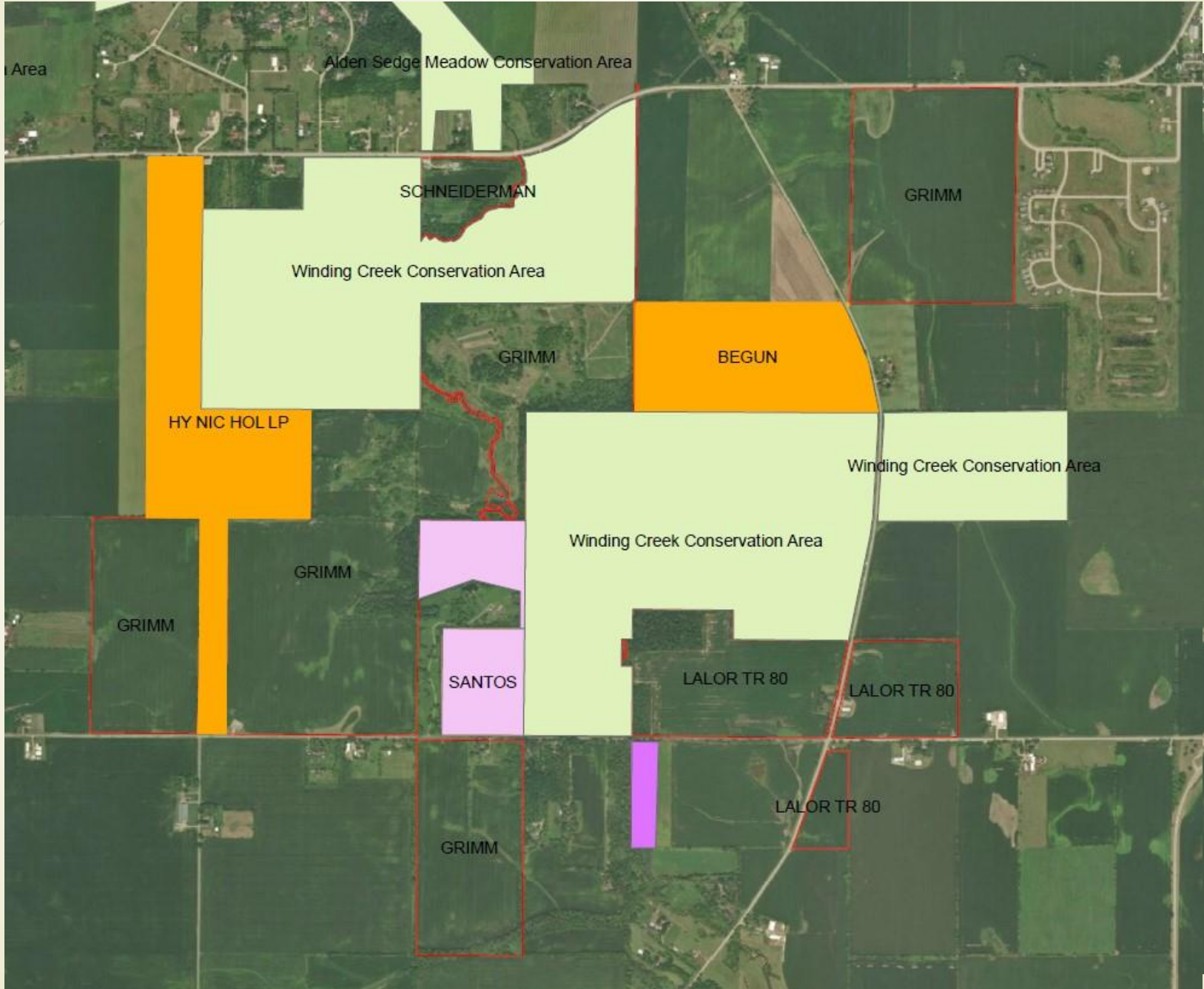


Legend

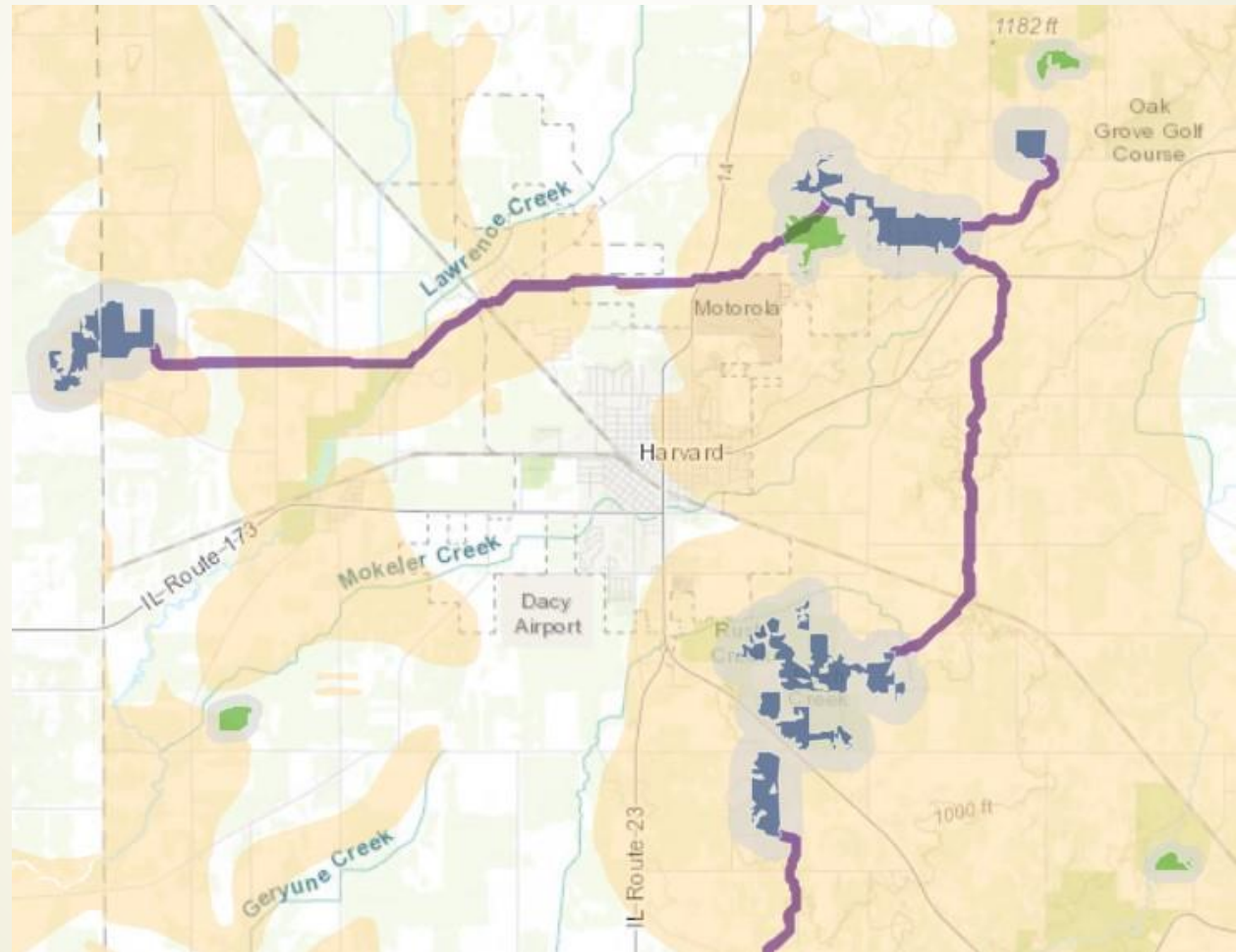
- TLC
- Public Sector
- Private Sector
- Municipal Parks
- Illinois Nature Preserves Commission
- Farmland Protection Prioritization - Complete**
-all other values-
- Total**
- 5
- 6

0 1.25 2.5 5 7.5 10 Miles

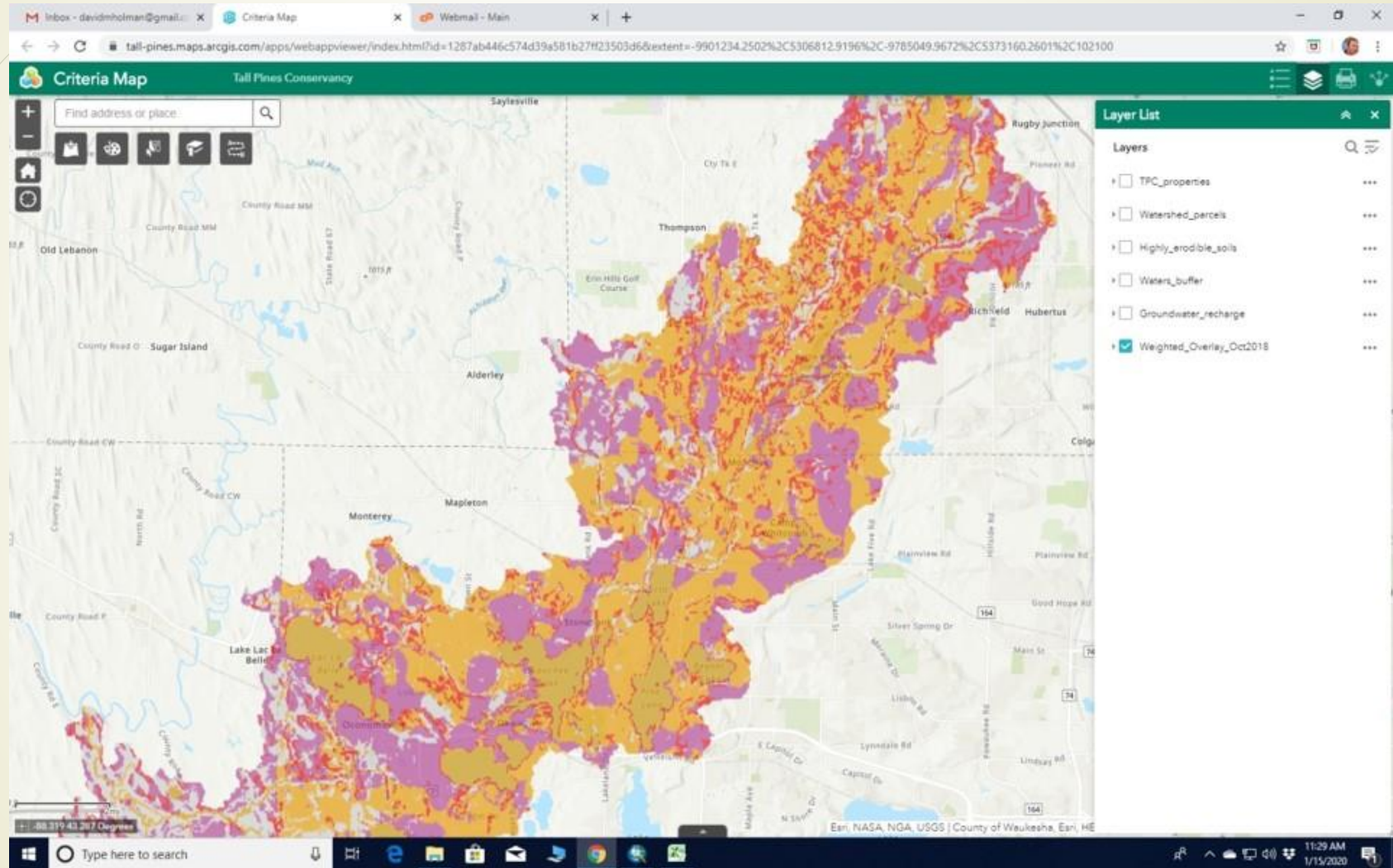




Additional applications of GIS for land protection priorities



Tall Pines example





Questions?

