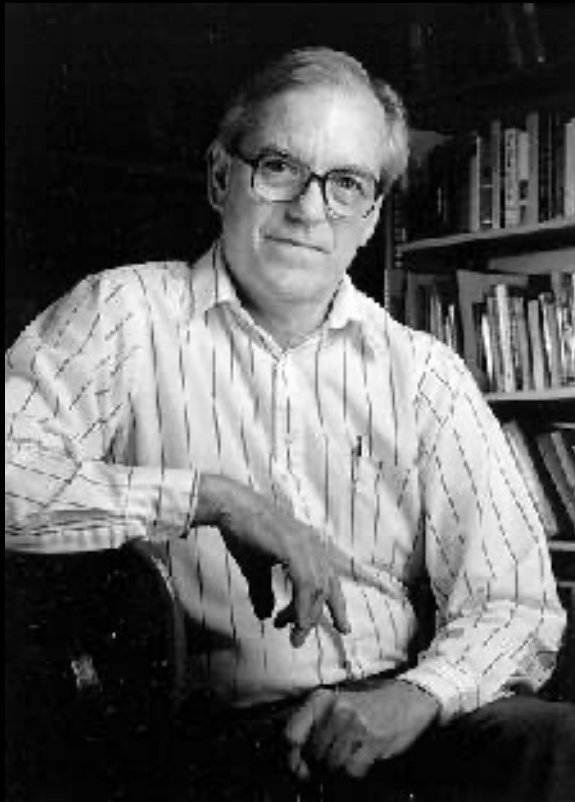


A sense of place.

Bruce Hannon



“Surely, one is formed by the community where one is raised, by the people of that place, and by their connection to the land.”

“Clearly, organizations need to exist to address the large-scale problem but those who run them will lose the fire of purpose if they did not start with a local sense of place and constantly renew that sense by their return.”

The Sangamon River

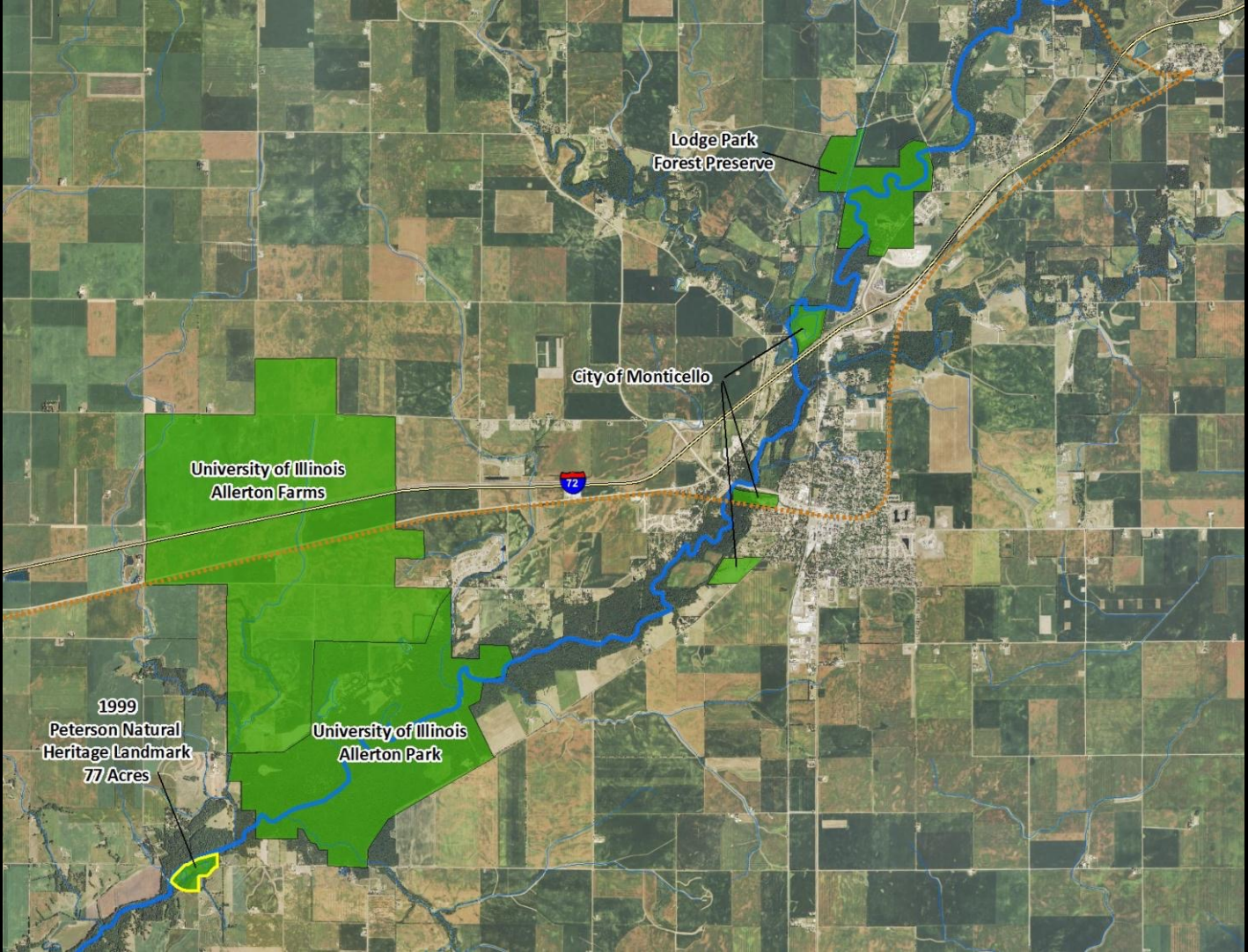
Piatt County, Illinois

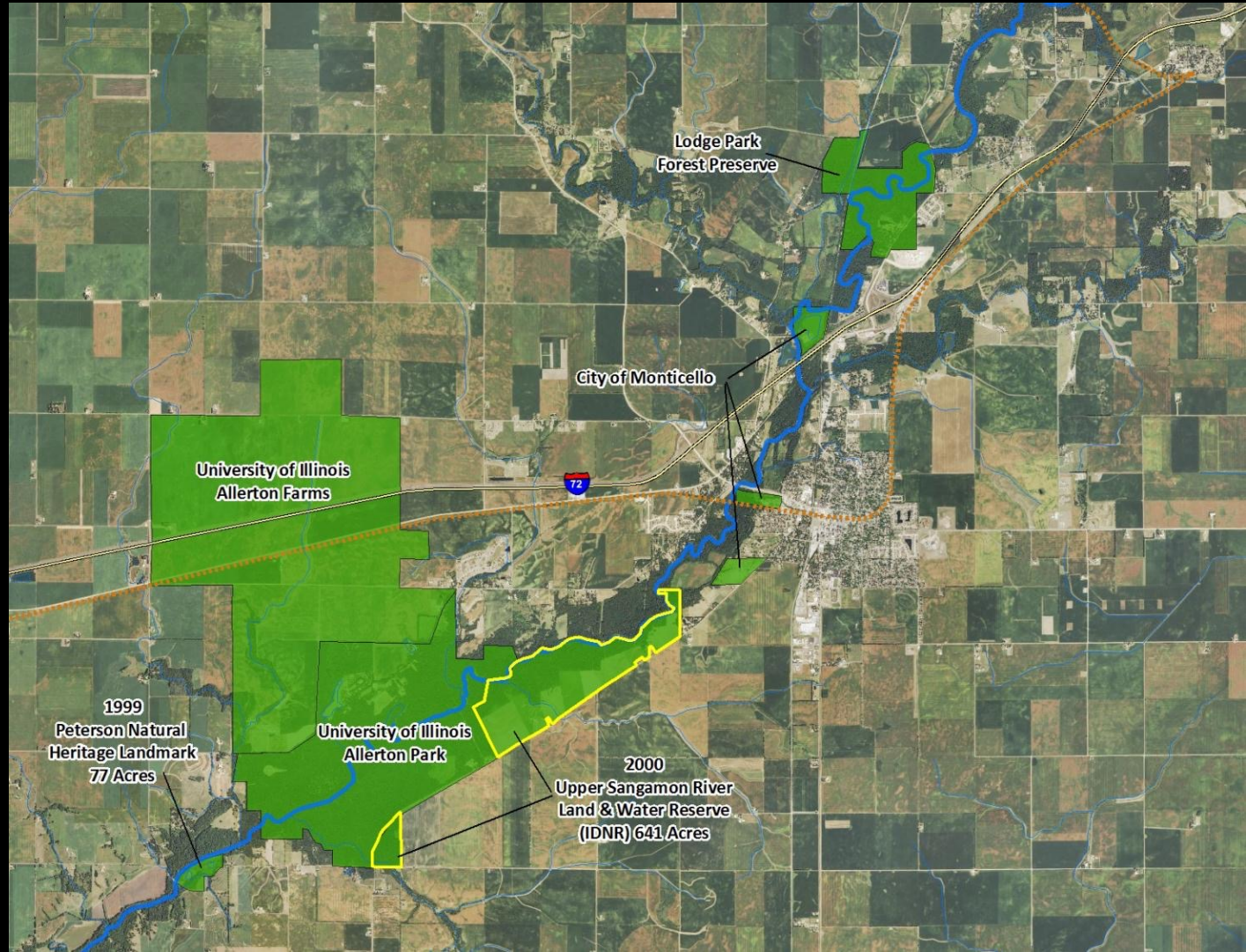
Land Conservation Foundation

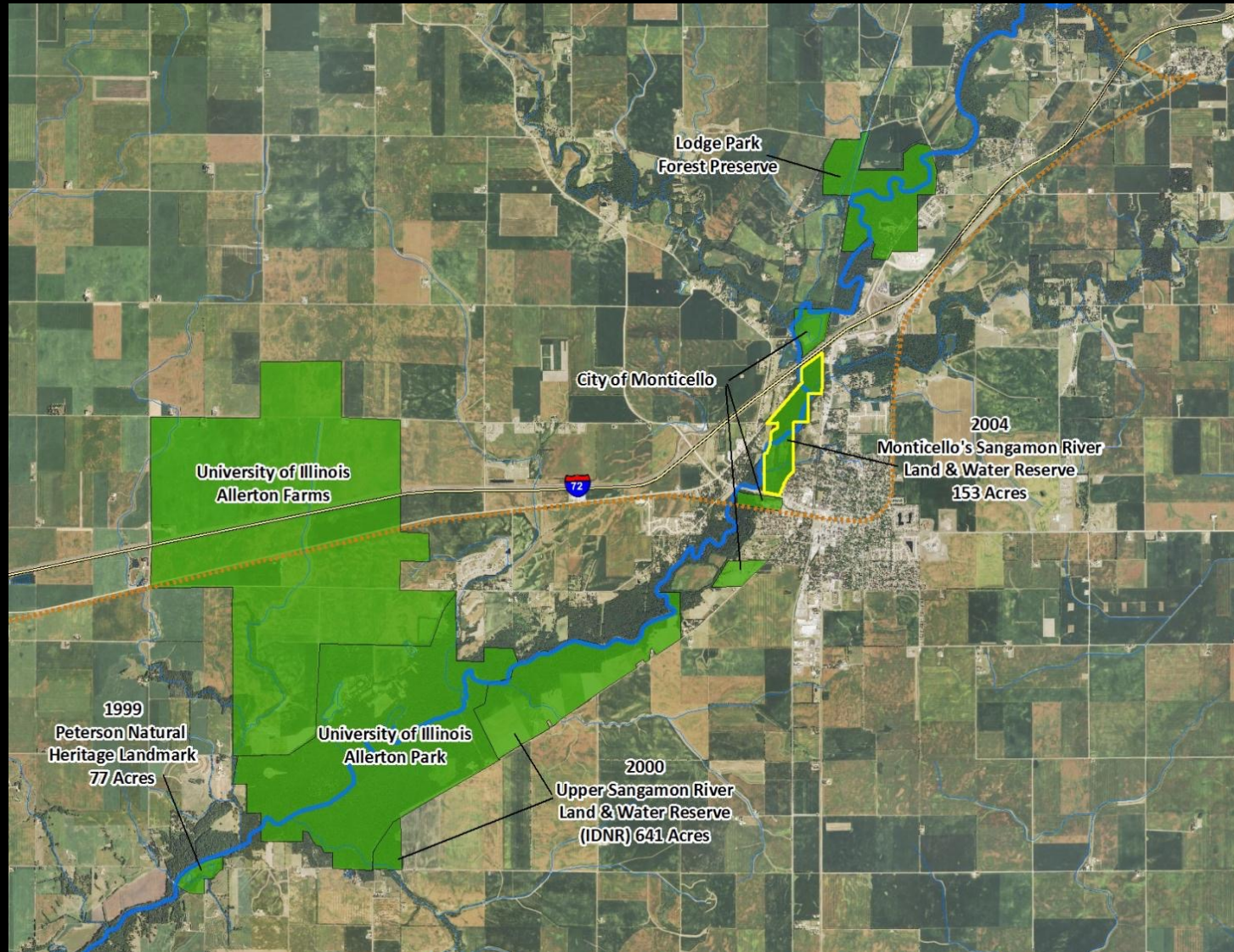
- The Illinois Natural Areas Inventory

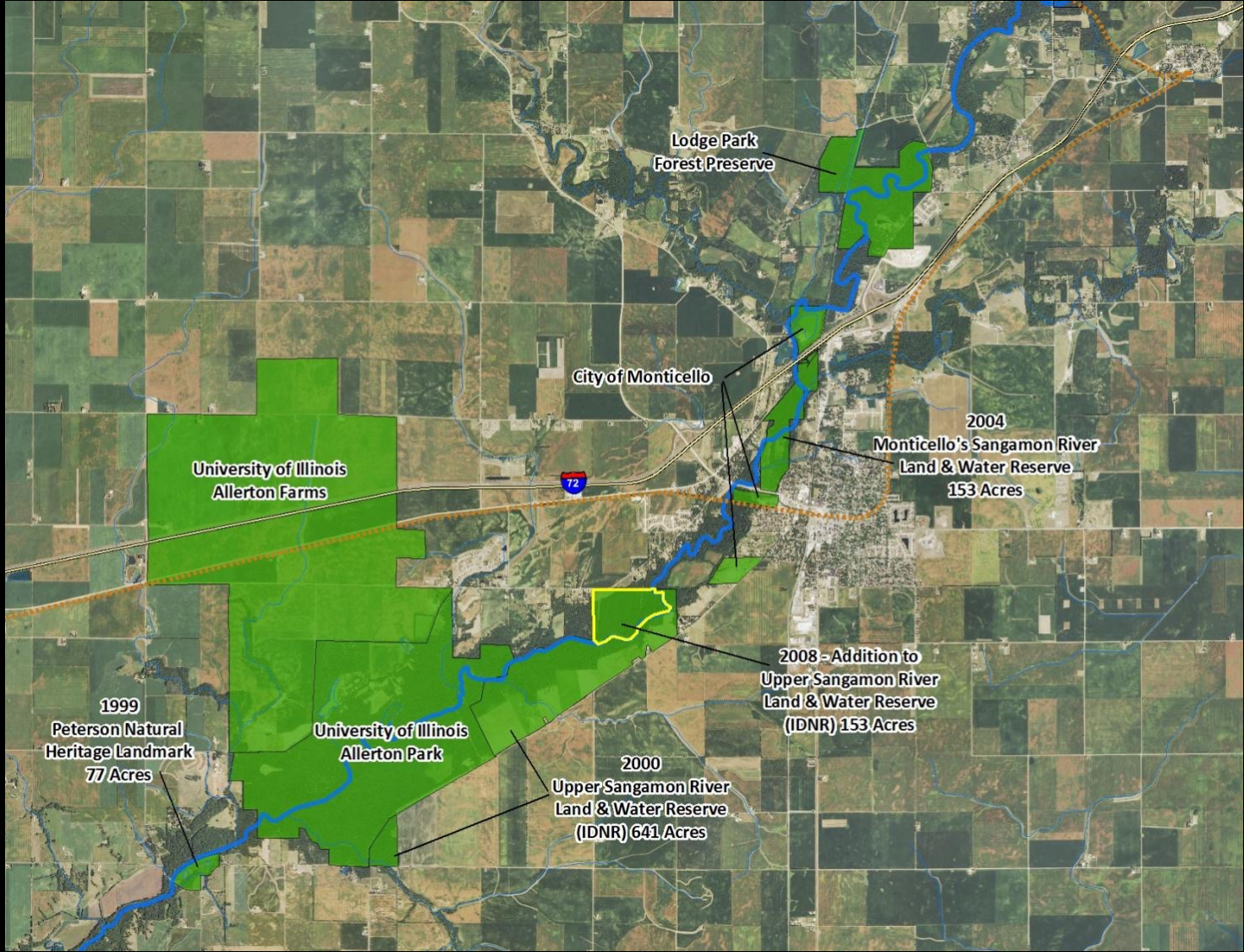
- The Sangamon River crosses the entire length of Piatt County and its entire length is an INAI site.

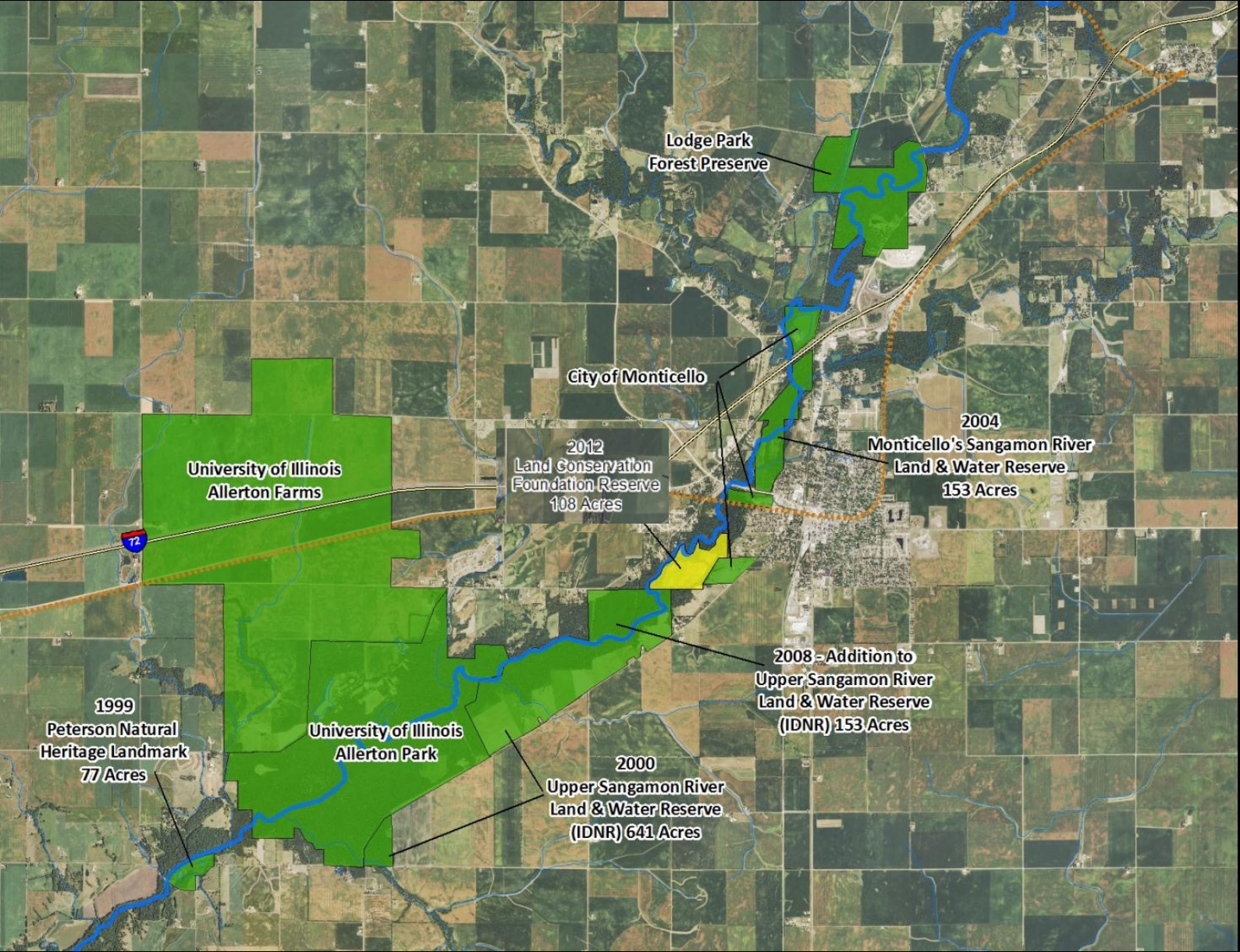




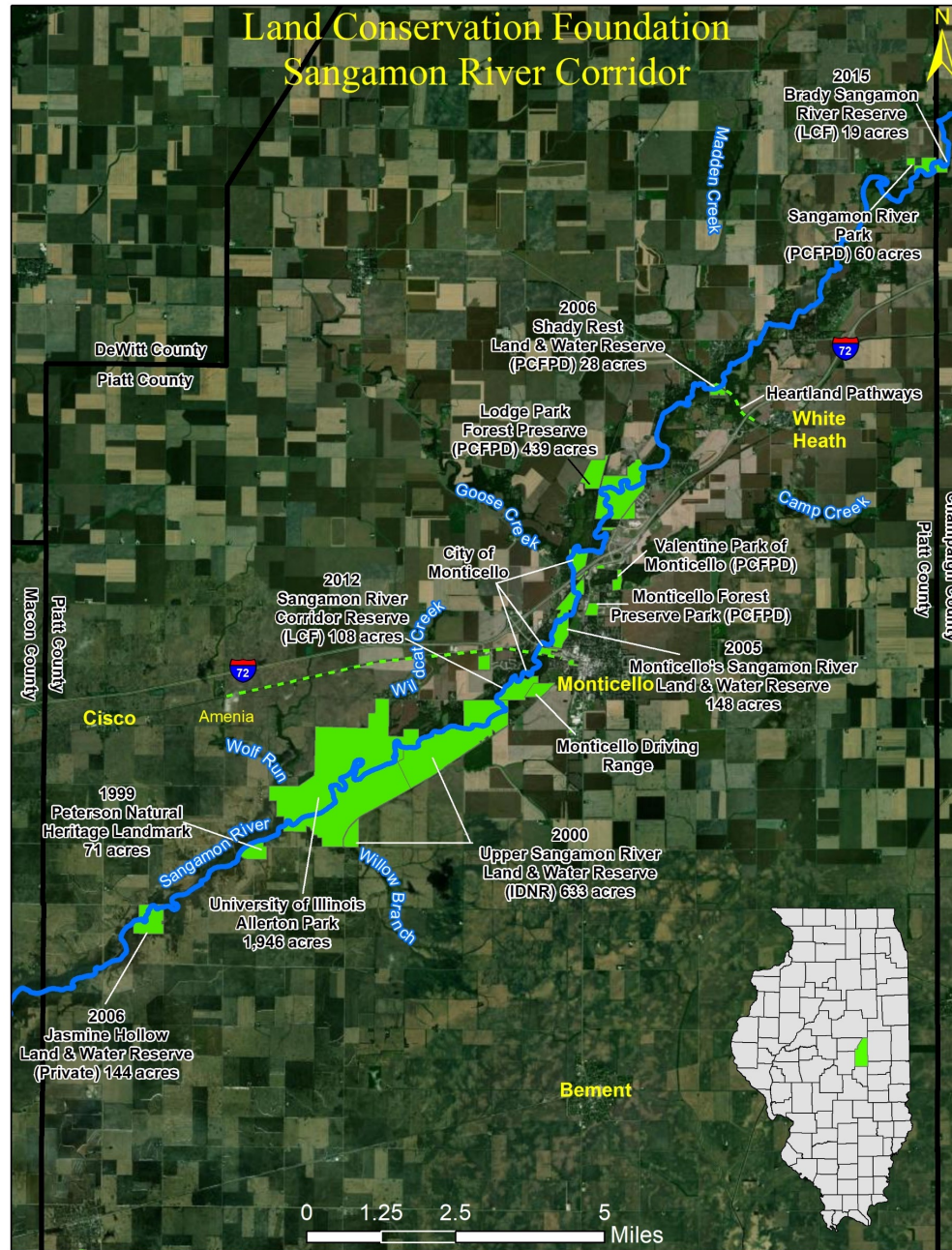








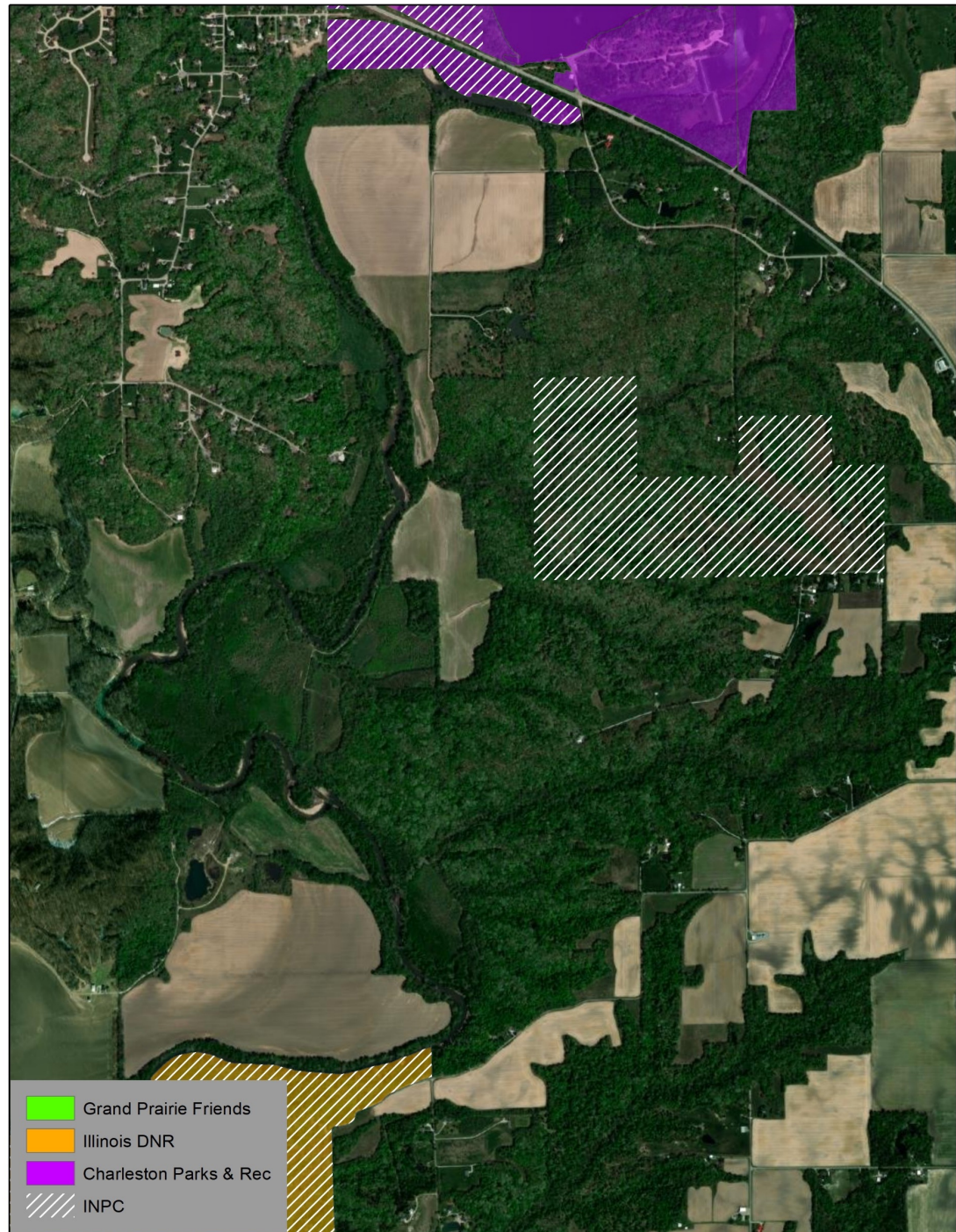
Land Conservation Foundation Sangamon River Corridor



Embarrass River

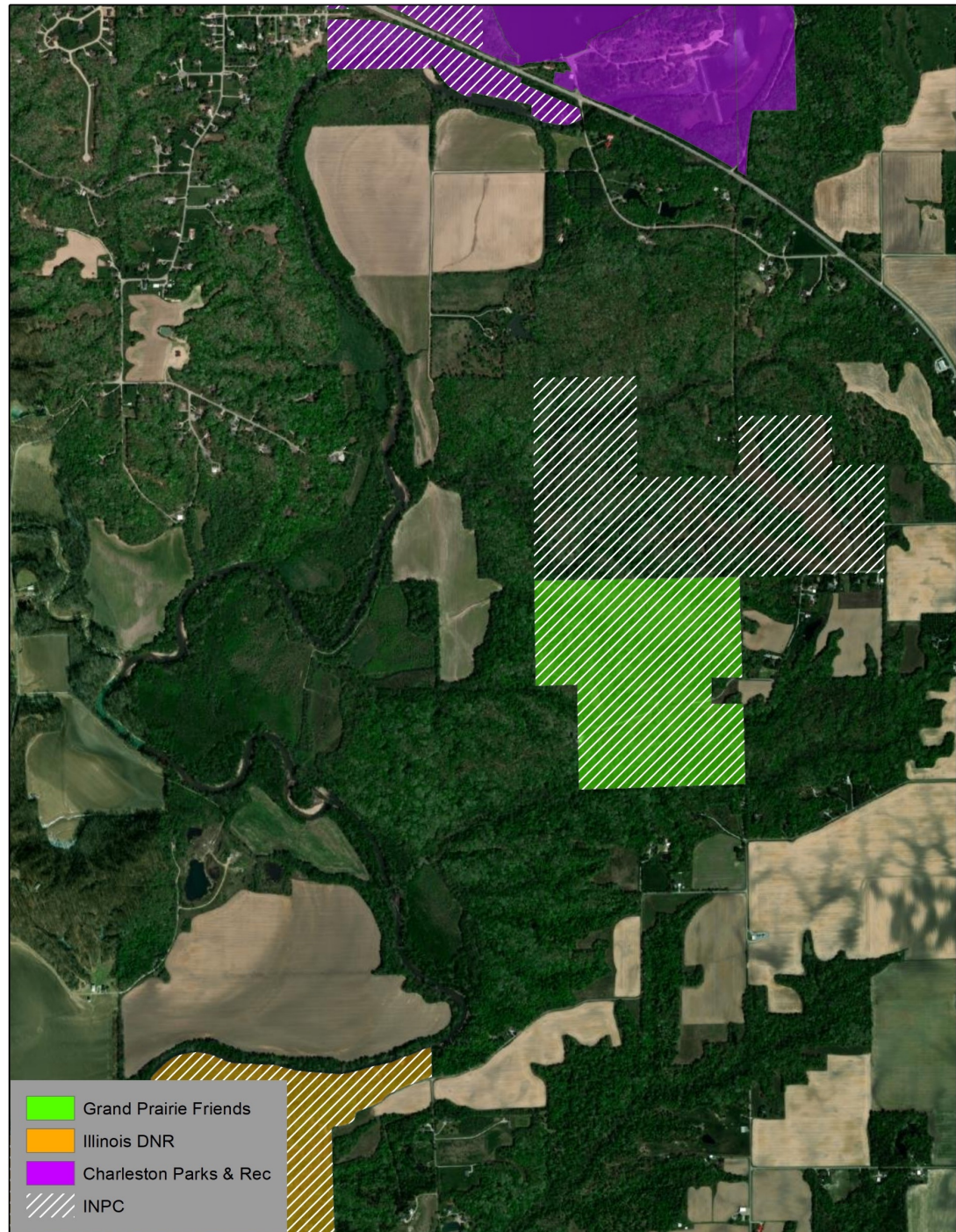
Coles County Illinois

Grand Prairie Friends

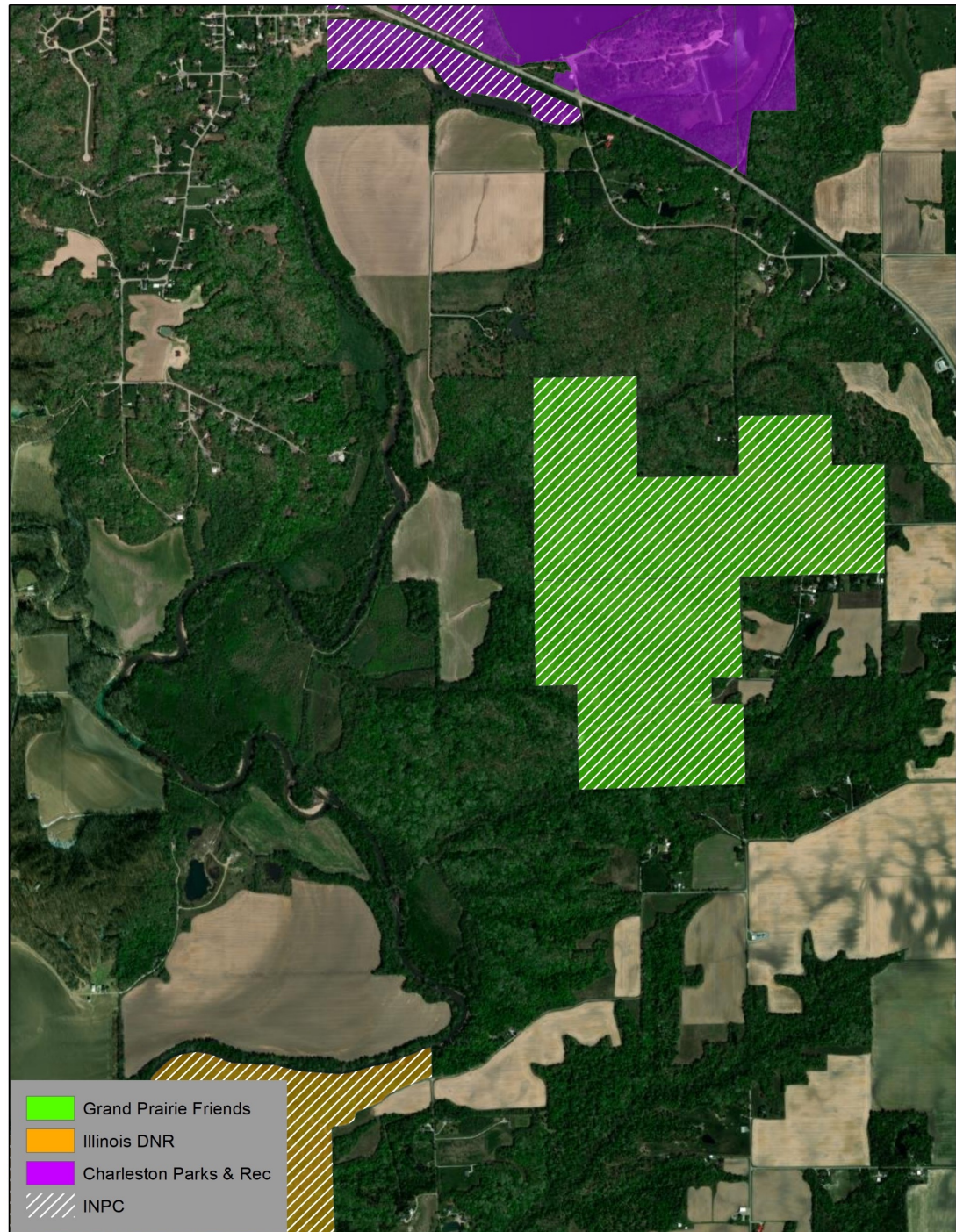


- Grand Prairie Friends
- Illinois DNR
- Charleston Parks & Rec
- INPC

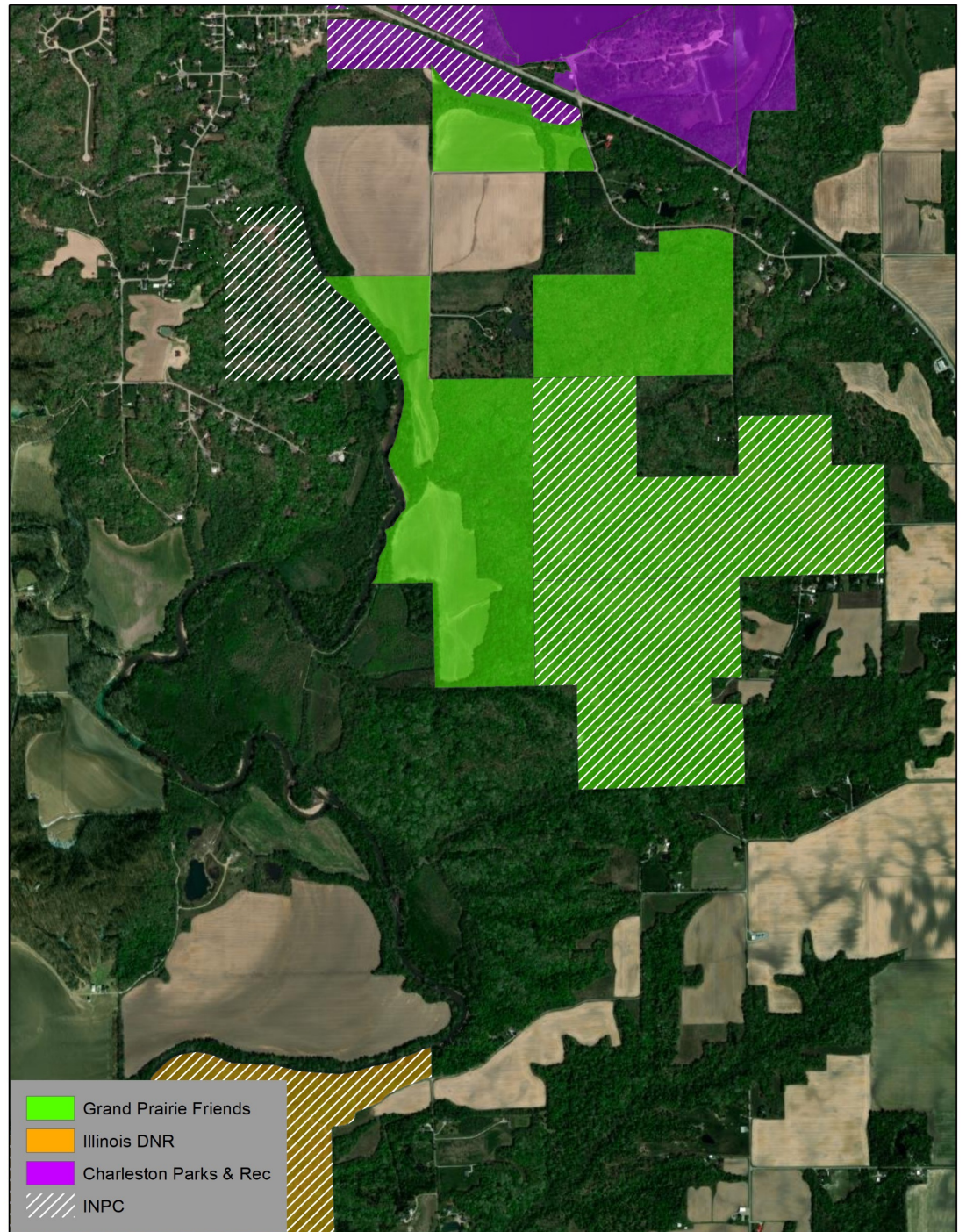
2011
0 acres



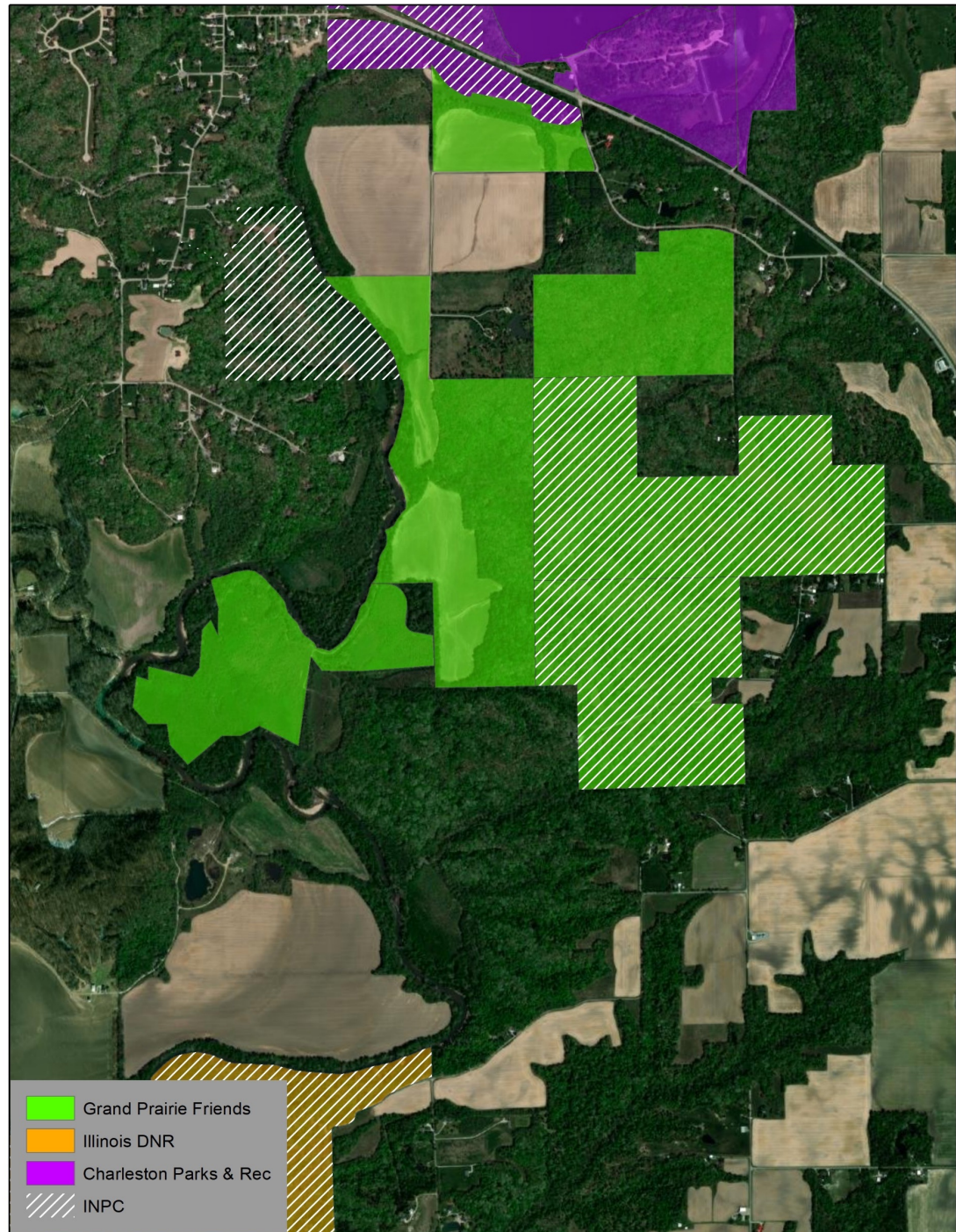
2012
141 acres



2014
333 acres

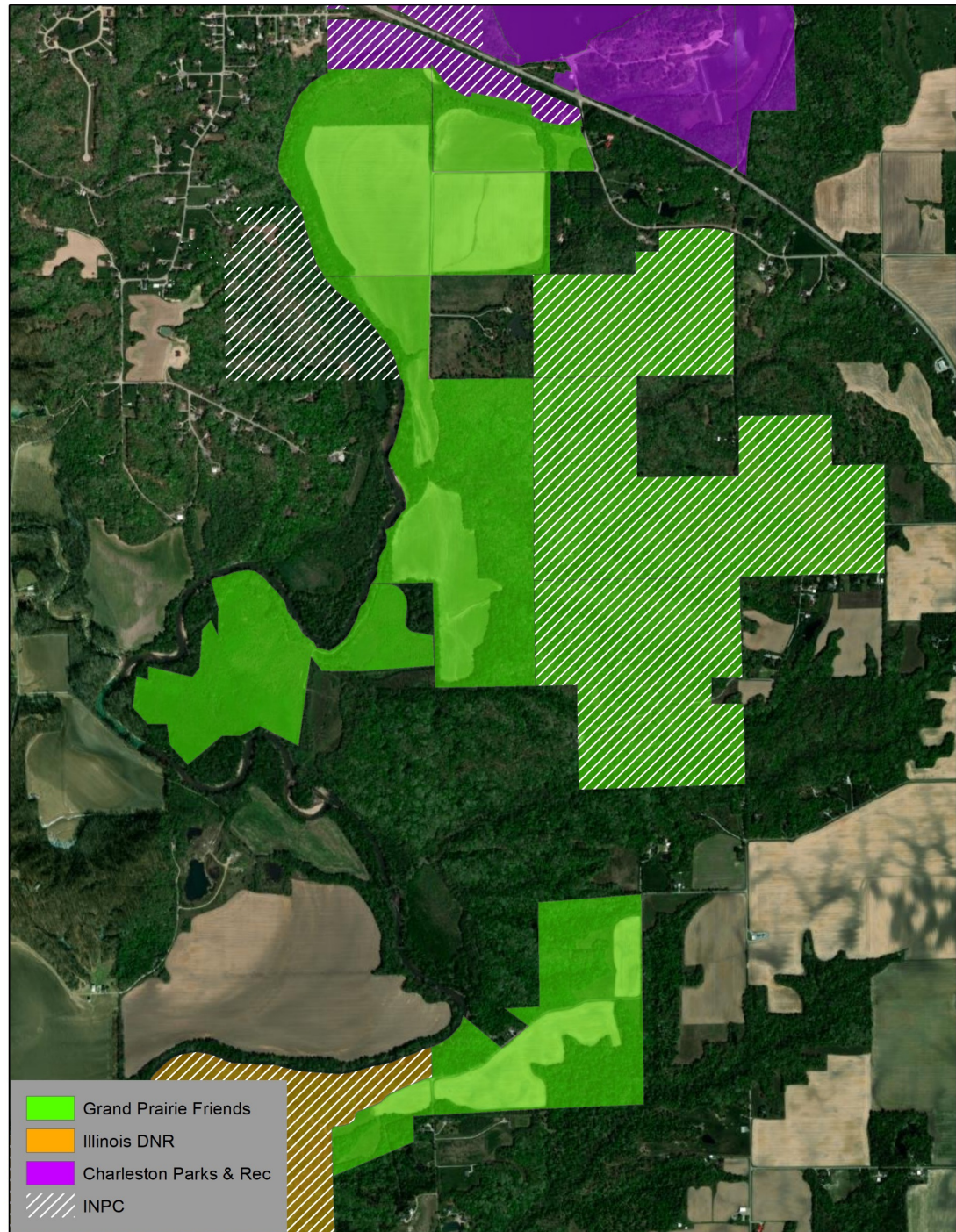


2015
625 acres

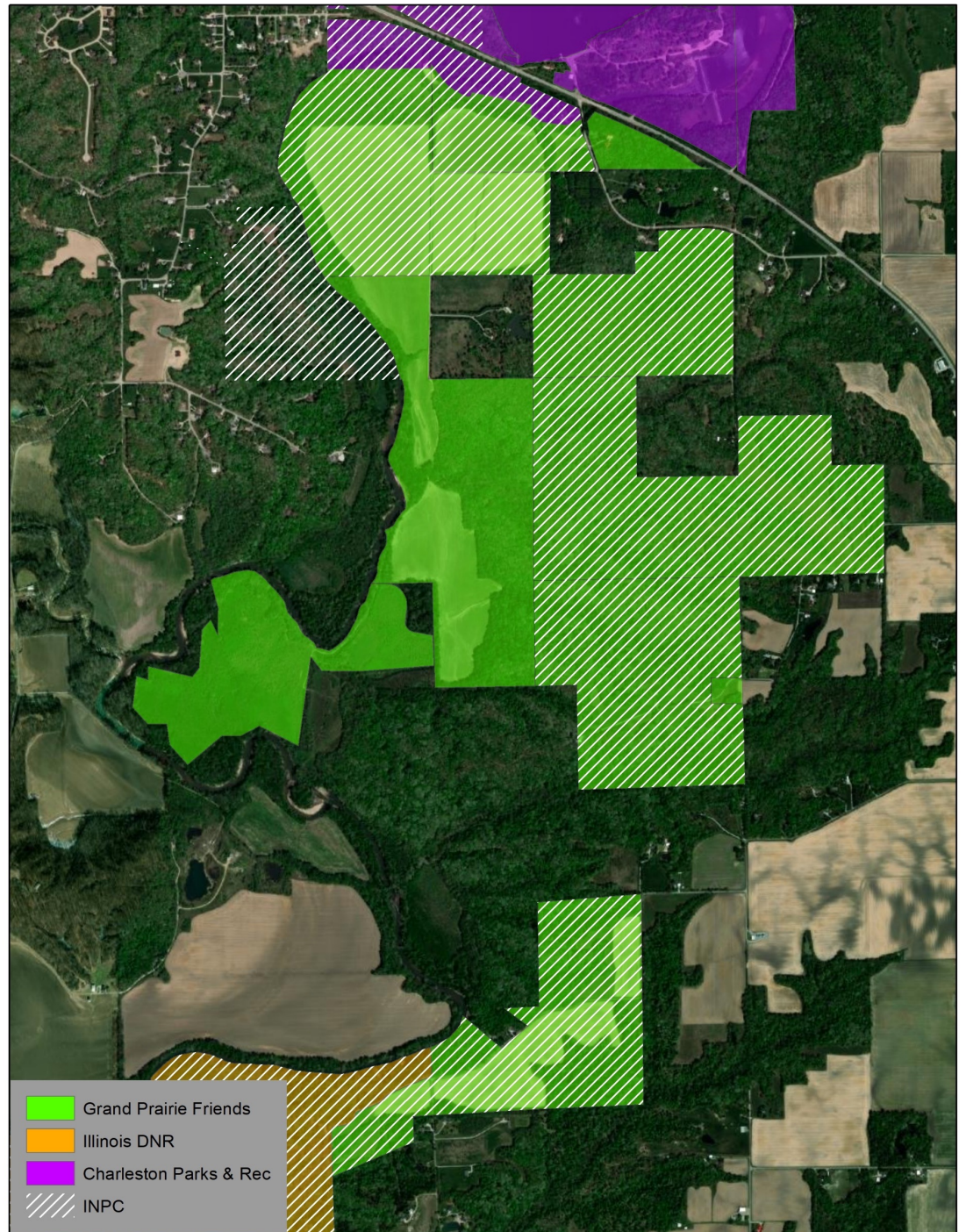


- Grand Prairie Friends
- Illinois DNR
- Charleston Parks & Rec
- INPC

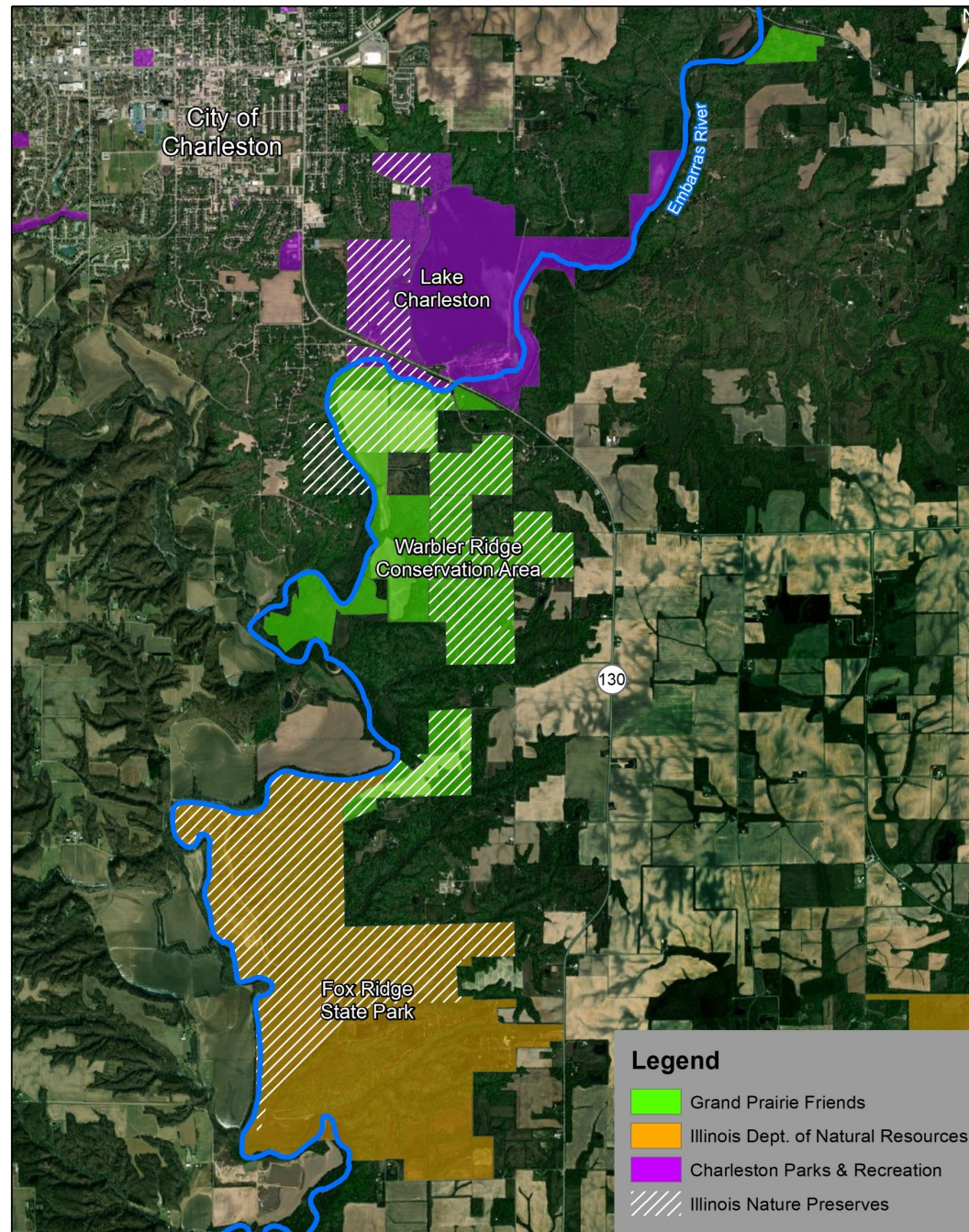
2017
724 acres



2018
1,004 acres



2020
1,062 acres



2020
1,062 acres

**PSCC members are doing amazing work
all over Illinois.**

**Supported by members, volunteers,
donors, large foundations, and family
foundations.**

There are 7,316 private foundations in Illinois.
Combined, these private foundations
employ 150 people, earn more than \$5 billion in
revenue each year, and have assets of \$41 billion.

<https://www.causeiq.com/directory/private-foundations-list/illinois-state/>

*KEEP UP THE GREAT
WORK !*