

PSCC Conference 2022



Brent Masiero, Great Rivers
Prescribed Burn Association

Jesse Riechman, Southern Illinois
Prescribed Burn Association



2006 - The Southern Illinois Prescribed Burn Association

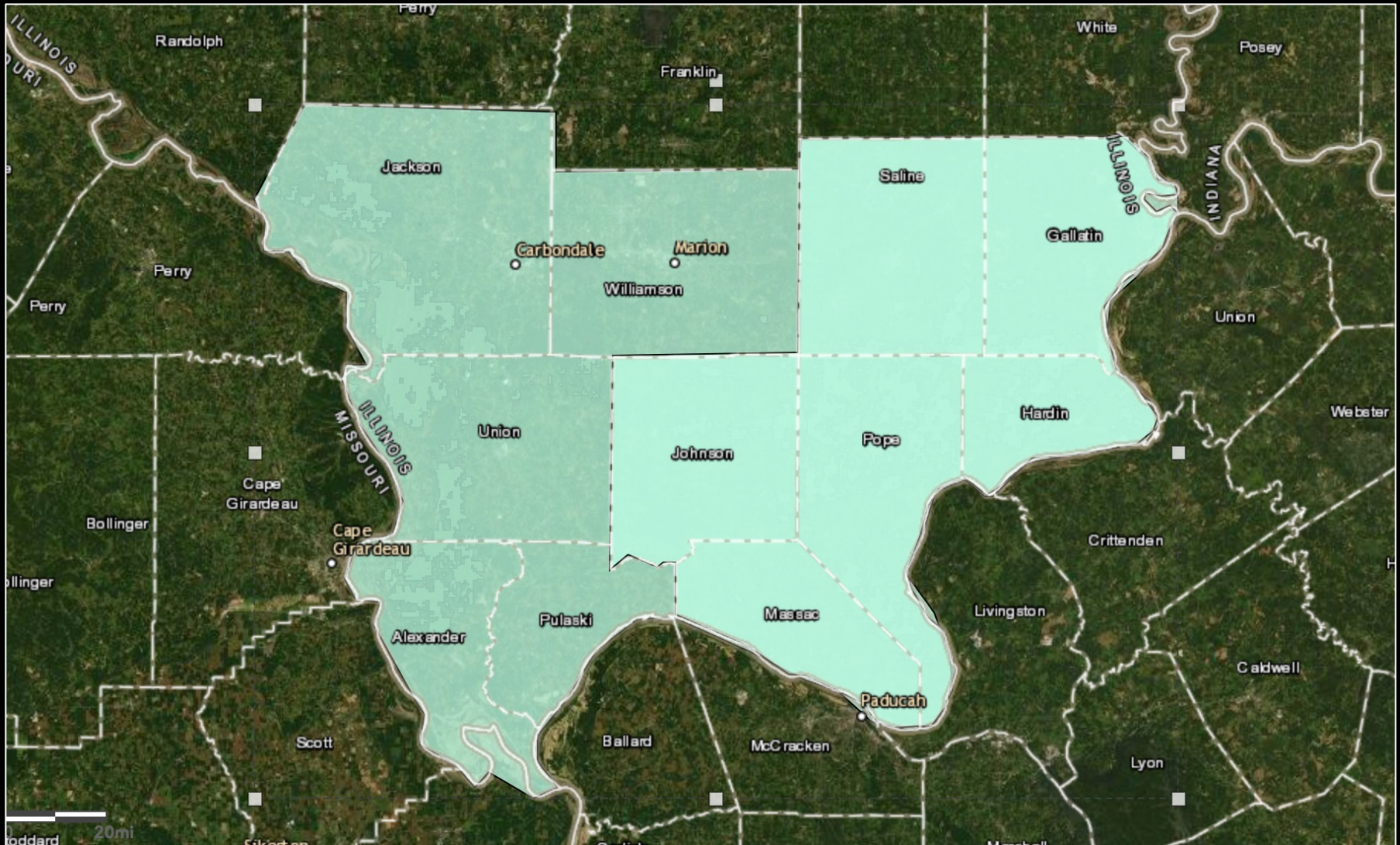
A joint effort by a small group of stakeholders

Grant funded, advertised by word of mouth.

Provided equipment, training, planning, and leadership to safely burn on private land.



2020 project area



Since 2006



- 15 Years of burning
- Total acres burned by SIPBA = 25,500+
- Average size of burn = 65 acres
- Total number of burns = 435+
- Members = 180





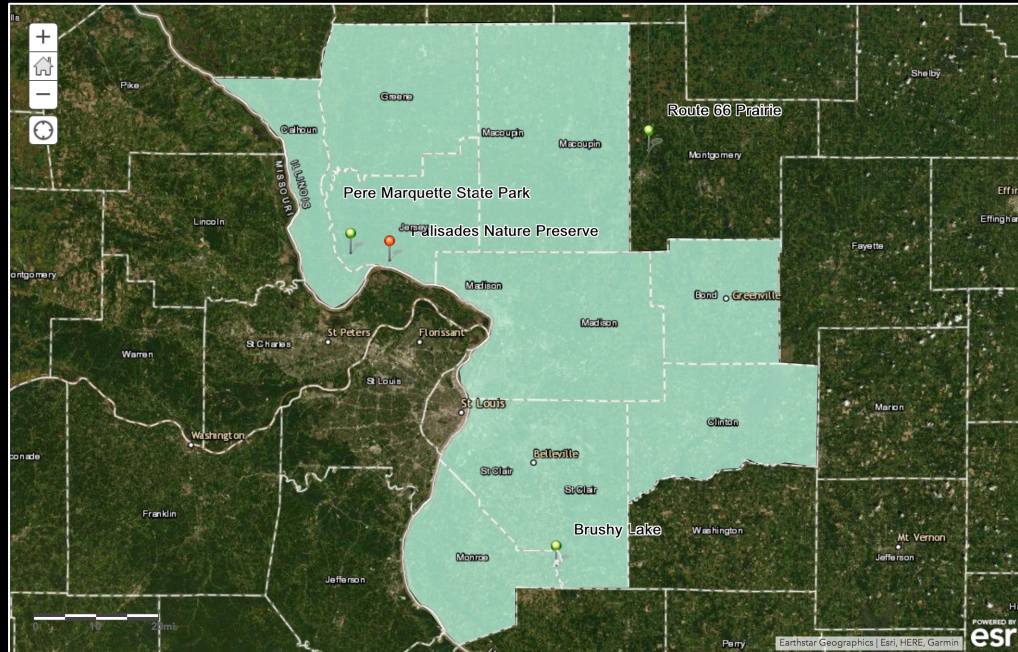
Ignite Illinois

Award: \$190,000 combined
Project Value: Over \$350,000



- The Great Rivers Prescribed Burn Association – Godfrey, IL
- By replicating the SIPBA model, we will increase prescribed burn acres and support in key areas throughout the state.
- Increase communication and connection amongst agencies and individuals for increased effort and result on both public and private lands.

Great Rivers Prescribed Burn Association



- The Great Rivers Prescribed Burn Association – Godfrey, IL
- Serving 9 counties in SouthWestern Illinois
- Equipment funded by proven partners
- Coordinated by experienced private land burners

Our First Year



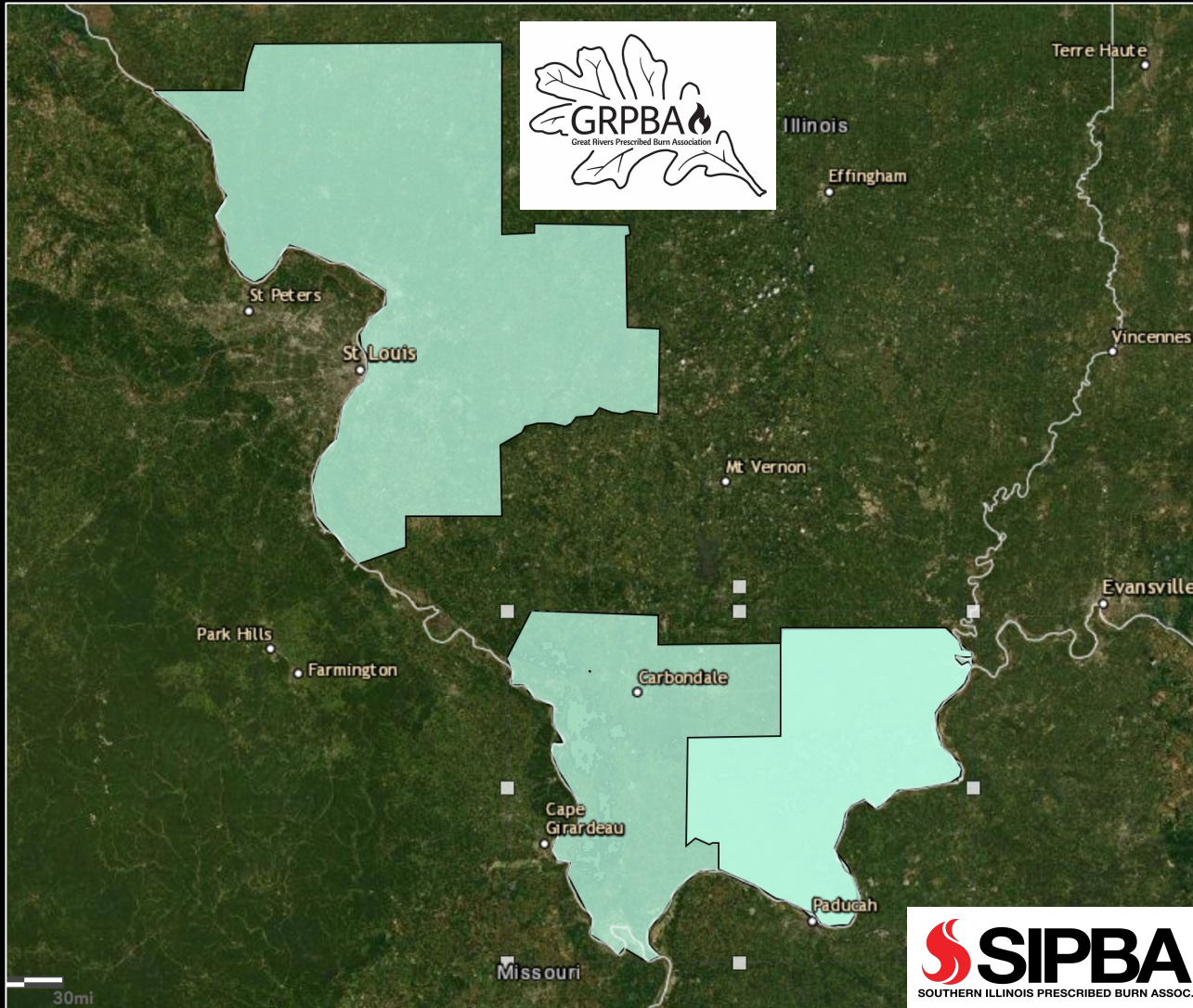
- Land Owner Training
- 14 Private Land Owning Members
- 3 Land Owning Organization Members
- Almost 50 Volunteer Participants
- 6 Successfully Completed Burns
- Growing support

What challenges are we facing?



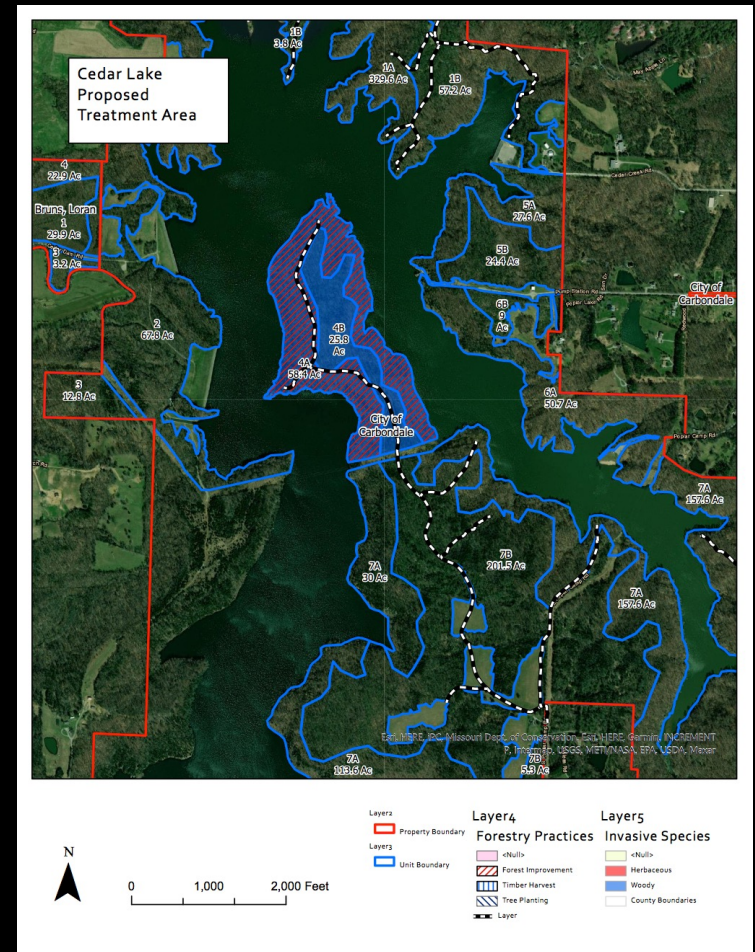
- Prescribed Fire Awareness
- Insurance coverage for practitioners.
- Funding for coordinators.

2022 project area



The Illinois Prescribed Burn Act 2007

- Normalizes Prescribed Burning as agricultural practice
- Establishes simple negligence standard
- Requires Burn Plan
- Requires State certified Burn Manager



The Illinois Prescribed Burn Act *Conundrum*

- Burn Manager Certification not easily obtainable for average landowner
- Shortage of insurance options for contractors
- Choice 1) Hire an uninsured contractor
- Choice 2) Noncompliant burning



The search for Insurance

- State Farm
- Outdoor Underwriters
- Bishop and Ewell
- NFP Property and Casualty
- Outdoor Insurance Group
- Outdoor Underwriters
- C.D. Rigdon and Associates
- Gee-Schussler
- NWTF
- Association of Consulting Foresters
- Society of American Foresters
- Lloyds London

Resources:

The Illinois Prescribed Fire Council
Texas Department of Agriculture
NWTF Member Insurance Program
NC State



“Let me check with our underwriters
and get back to you...”

“Sorry, not
in Illinois”

“It’s the word ‘BURN’
in your name”



“No history
of claims”

“They won’t
touch it”

“You’re not
NOT covered”

“We can’t insure against
simple negligence”

“... that was a grandfather policy”

The Illinois Prescribed Burn Act Solution?

Leaves landowners unable to comply with the prescribed burn act unless involved in a PBA.

Due to work by Ignite Illinois, TNC, The Illinois Environmental Council and Illinois Prescribed Fire Council, a revised Act introduced in Illinois Congress this winter.

Gross Negligence





Missouri's Prescribed Burning Act

Moprescribedfire.org

**Missouri Prescribed Fire
Council**

**Promoting & Protecting
Responsible Use of Prescribed Fire**

Background of HB 369 in a Nutshell

What Does it Do & Why

- 🔥 Prior to HB 369 there was not a defined definition of negligence/liability for any sort of Rx burning activity. This limited the ability of contractors/landowners to obtain insurance to include coverage for Rx burns.
- 🔥 2021 was the third year it had been proposed during session
- 🔥 Effort to establish a tiered approach to liability met resistance to “gross negligence”
 - 🔥 Simple negligence for prescribed burning
 - 🔥 Gross negligence for CPBM conducting burn under burn plan

Background of HB 369 in a Nutshell

What Does it Do & Why

- 🔥 Now, with the language in HB 369, if a burn goes wrong, a contractor/landowner must be proven negligent. Negligent is:
 - 🔥 *Failing to take proper care in doing something*
 - 🔥 *Failing to exercise the care expected of a reasonable prudent person in like circumstances (Merriam-Webster)*
- 🔥 The HB defines a “Certification” process.
 - 🔥 Certification is not required to conduct burns
 - 🔥 CPBM program in place now if gross negligence is passed in the future.

What collaboratives or partnerships did you rely on?

- ❖ Missouri Prescribed Fire Council
- ❖ The Nature Conservancy
- ❖ Pheasants Forever/Quail Forever
- ❖ National Wild Turkey Federation
- ❖ Missouri Department of Conservation
- ❖ Conservation Federation of Missouri – Legislative Action Center
- ❖ US Forest Service, Mark Twain NF
- ❖ Missouri Department of Natural Resources, Parks





RIVER TO RIVER
Cooperative Weed Management Area

SIU
CARBONDALE



Shawnee
Resource, Conservation
& Development



UNIVERSITY OF ILLINOIS
EXTENSION
investing in You



The Nature Conservancy.
Protecting nature. Preserving life.



LEWIS & CLARK
COMMUNITY COLLEGE
**Think Green.
Live Green.**
www.lc.edu/green



SIPBA
SOUTHERN ILLINOIS PRESCRIBED BURN ASSOC.